

PRINCESS 56

\$768,000 Year: 2013 | Length: 54.49 ft | Hong Kong



PRINCESS 56

OVERVIEW

2013 PRINCESS 56
Priced USD \$768,000

The Princess 56 is a timeless example of luxury and comfort, crafted by the renowned British shipbuilder, Princess Yachts. Princess Yacht is a well known British luxury yacht manufacturer known for its meticulous attention to detail.

This Princess 56 has a steel grey hull with a satin walnut interior. It has two large social areas and a well-equipped galley in the saloon, which is perfect for hosting parties. The layout includes three cabins and two heads, with the master cabin for the owner and two more generous cabins for the other family members and friends. The boat also has a large flybridge, making it a great example of design and performance for boats under sixty feet. It comes with twin Volvo engines 800 HP, an Onan generator 13.5 kW and air conditioning, a hydraulic hi-lo bathing platform, ice maker fitted in the saloon and a Raymarine navigation package at both helms.

This particular boat has been well taken care of by a good owner and presents better than her age, there's no to-fix list and she is ready to go anytime. I highly recommend you come for a viewing, you will be amazed by the condition! Currently located to Hong Kong. Please contact our team for more information.

MEASUREMENTS

Length: 54.49 ft

Beam: 15.49 ft

Displacement:

PROPULSION

Engine No: 1

Engine No: 2

Yachting Freedom since 1984



T: +852 25555 8377

Engine Make: Volvo

Engine Model: D13-800

Engine Year: 2013

Engine Fuel Type: diesel

Engine Power: 800HP

Engine Make: Volvo

Engine Model: D13-800

Engine Year: 2013

Engine Power: 800HP

BOAT DETAILS

Electrical and Deck hardware

- Electro-hydraulic swimming platform
- Additional 20m of 10mm anchor chain to give a total of 60 metres
- Stainless steel anchor in place of standard (25kg)
- Generator Onan 13.5kW/50 Hz (7300 hours until May 2024)
- UK 220v/240v sockets
- Underwater transom lights
- Foredeck freshwater anchor/ deckwash system
- Ice maker (Fitted in saloon)
- Fit additional 220v/240v power socket & TV aerial outlet in Forward & Starboard cabins for later fitting of TV's

Audio Visual & Communications

- Deck Saloon: Harman Kardon 2.1 Blu-ray system (with Bluetooth connectivity) and KEF speakers (in place of the Radio/iPod/MP3 player)
- Owners Stateroom – Harman Kardon 2.1 Blu-ray system (with Bluetooth connectivity) and KEF speakers (linked to optional TV when ordered and in place of the Radio/iPod/MP3 player)
- 32" LED TV in Master Stateroom
- Flybridge: Fusion IP600 Radio/iPod/MP3 player with waterproof speakers, linked to the saloon audio system
- IPOD docking station in Saloon & Master Stateroom

Navigation

- Raymarine e125 Chartplotter/GPS with external GPS and 12.1" brilliant colour multifunction display at lower helm

HOW CAN WE HELP?

E: brokerage@simpsonmarine.com T: +852 2555 8377

SIMPSONMARINE.COM

- Raymarine HD colour radar with 24", 4Kw Radome (only if chartplotter is specified)
- Raymarine e125 multifunction 12, 1" brilliant colour display at upper helm
- Rest of World version plotter charts
- Fit international VHF

Air Conditioning

- Reverse Cycle Airconditioning/Heating: (64,000 BTU)
- Suitable for ambient temperature to 35°C (e.g. Florida/Eastern Mediterranean) with controls in all cabins and outlets in all areas (including bathroom)
- Aft cabin airconditioning

Exterior upholstery/ Canvas/ Covers

- Foredeck sunbed cushions in Movida Metallic PLATA with CARBON inlay
- Cockpit & flybridge seating including helm seats and sunbed cushions – Movida Metallic PLATA with CARBON inlay
- Bimini Top – Charcoal Grey sunbrella canvas
- Bimini top to have LED overhead lighting (switched from console)
- Electro-hydraulic poweredbiminitop

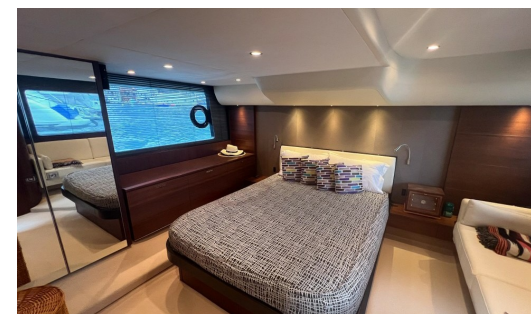
Disclaimer

The Company offers the details of this vessel in good faith but cannot guarantee or warrant the accuracy of this information nor warrant the condition of the vessel. A buyer should instruct his agents, or his surveyors, to investigate such details as the buyer desires validated. This vessel is offered subject to prior sale, price change, or withdrawal without notice.

CONTACT INFORMATION

Seen a Yacht you like? Contact our Hong Kong Team now to arrange your virtual viewing. We will be happy to step on board and host a video call with you, allowing you to look around the yacht in person and direct us to the features and areas which interest you the most. We are open, boat yards are open and independent surveyors are available in Hong Kong. We are ready to do business and can ship yachts to any region in the world. We look forward to hearing from you soon.

PRINCESS 56



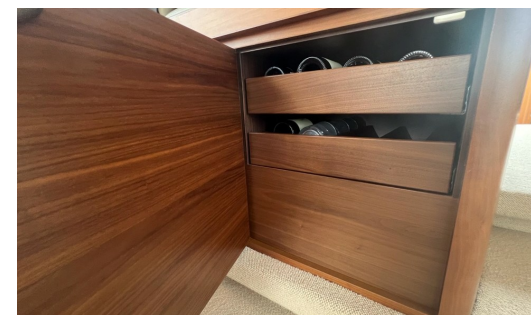
PRINCESS 56



PRINCESS 56



PRINCESS 56



PRINCESS 56

