



YACHT

**SANLORENZO**

SX  
76/

SX  
76/





SX  
76/





SX  
76/







SX  
76/





SX  
76/





SX  
76/





SX  
76/





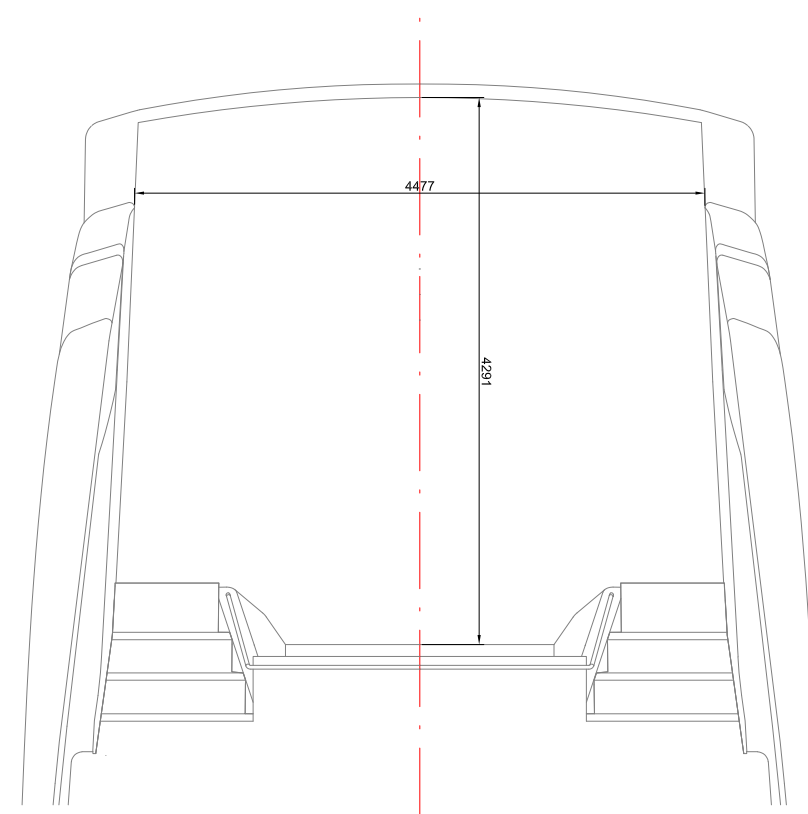
SX  
76/



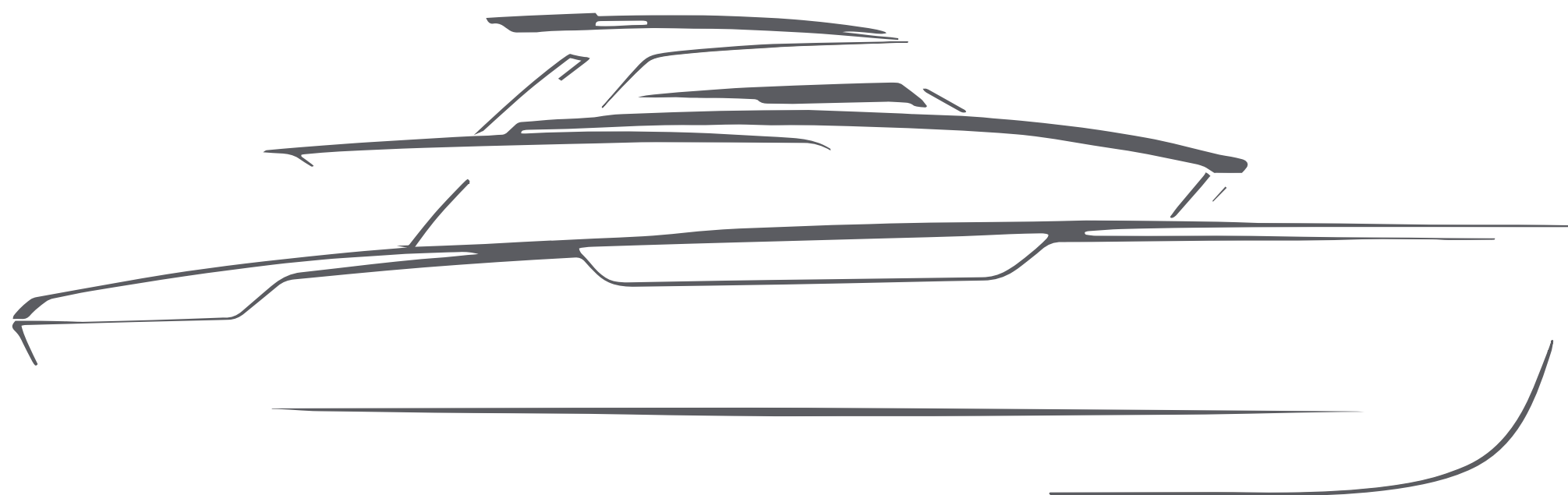




BEACH AREA



SX  
76/



**LISSONI  
ASSOCIATI**  
SPECIAL  
EDITION

---

SEE DEDICATED BROCHURE

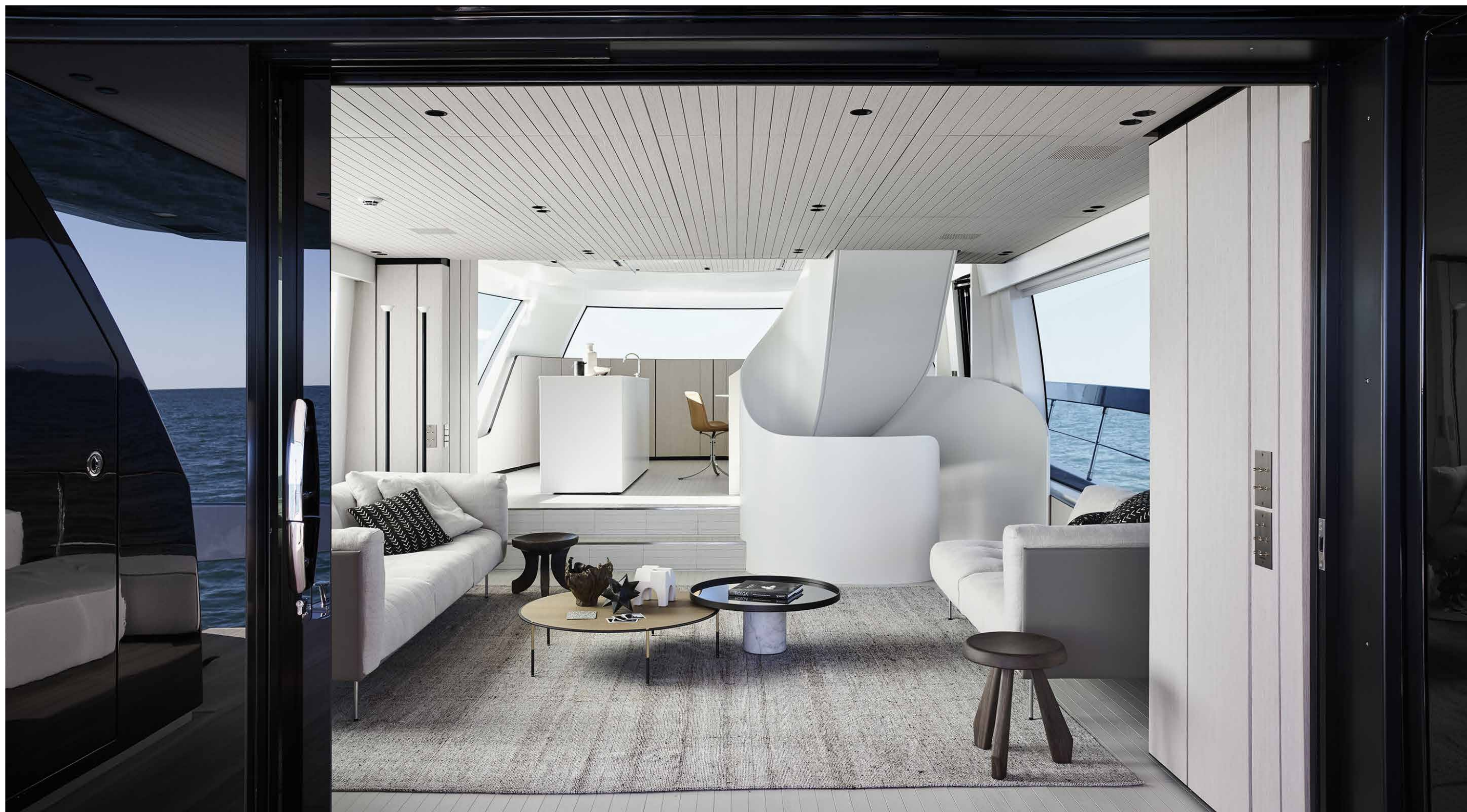








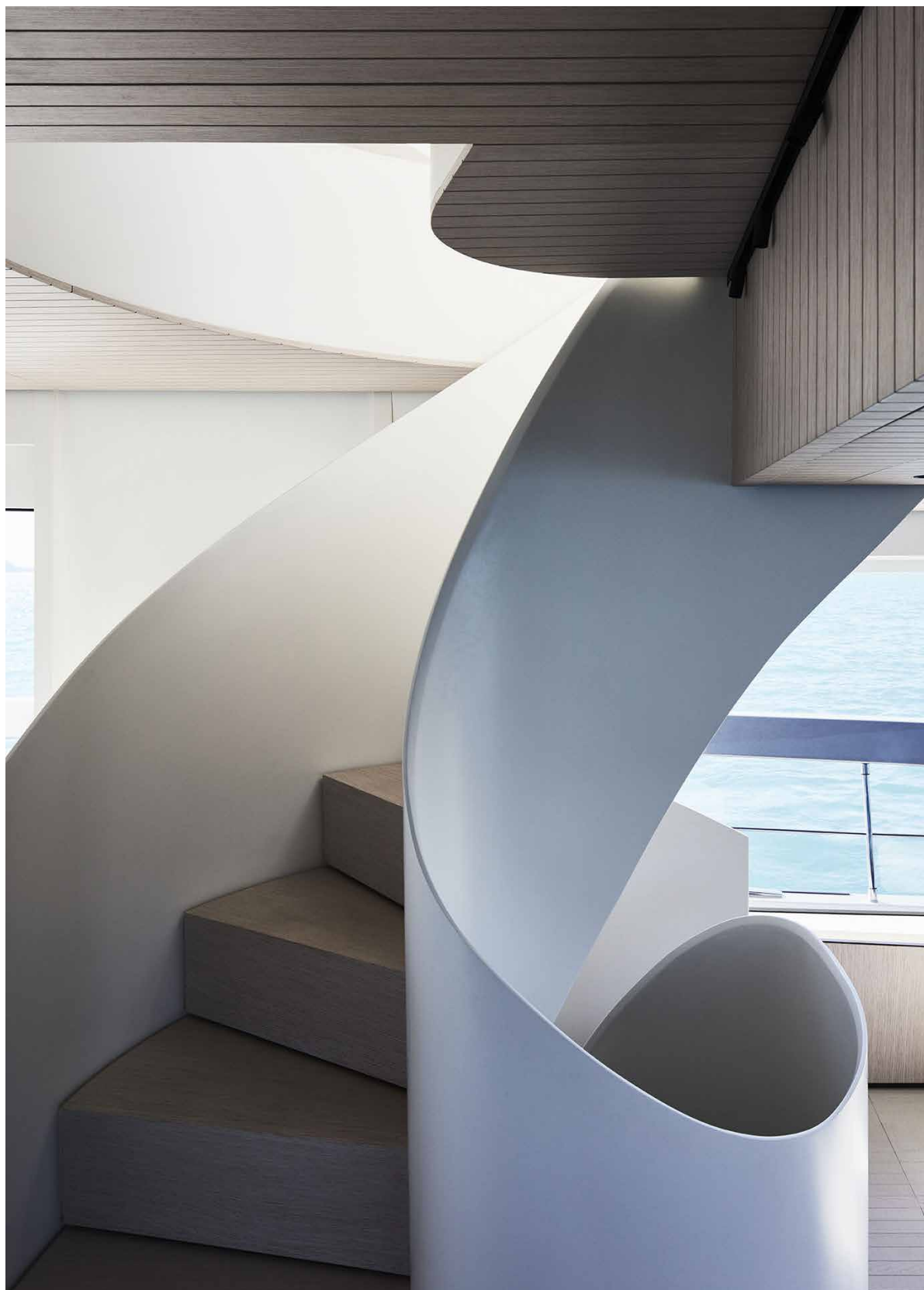














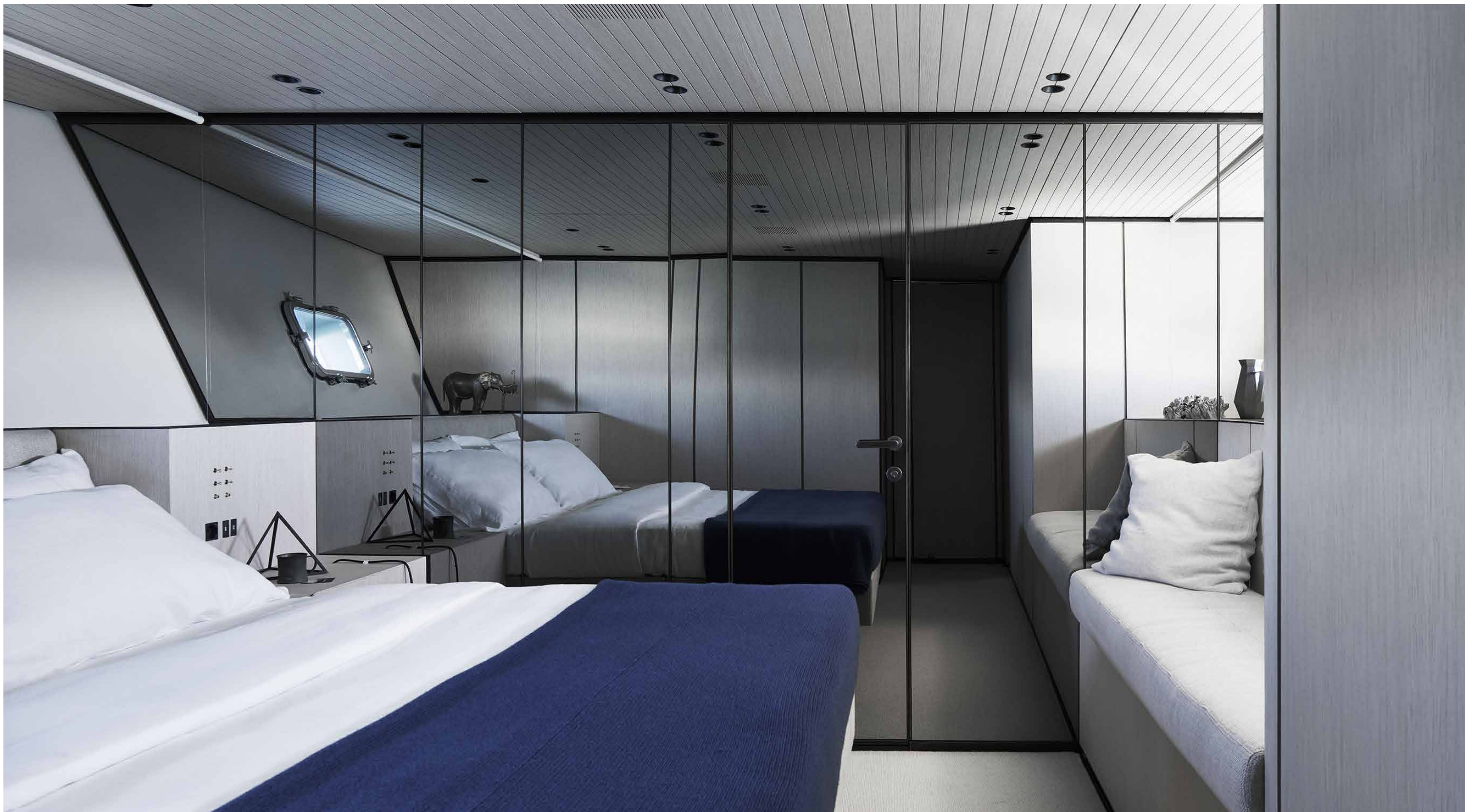








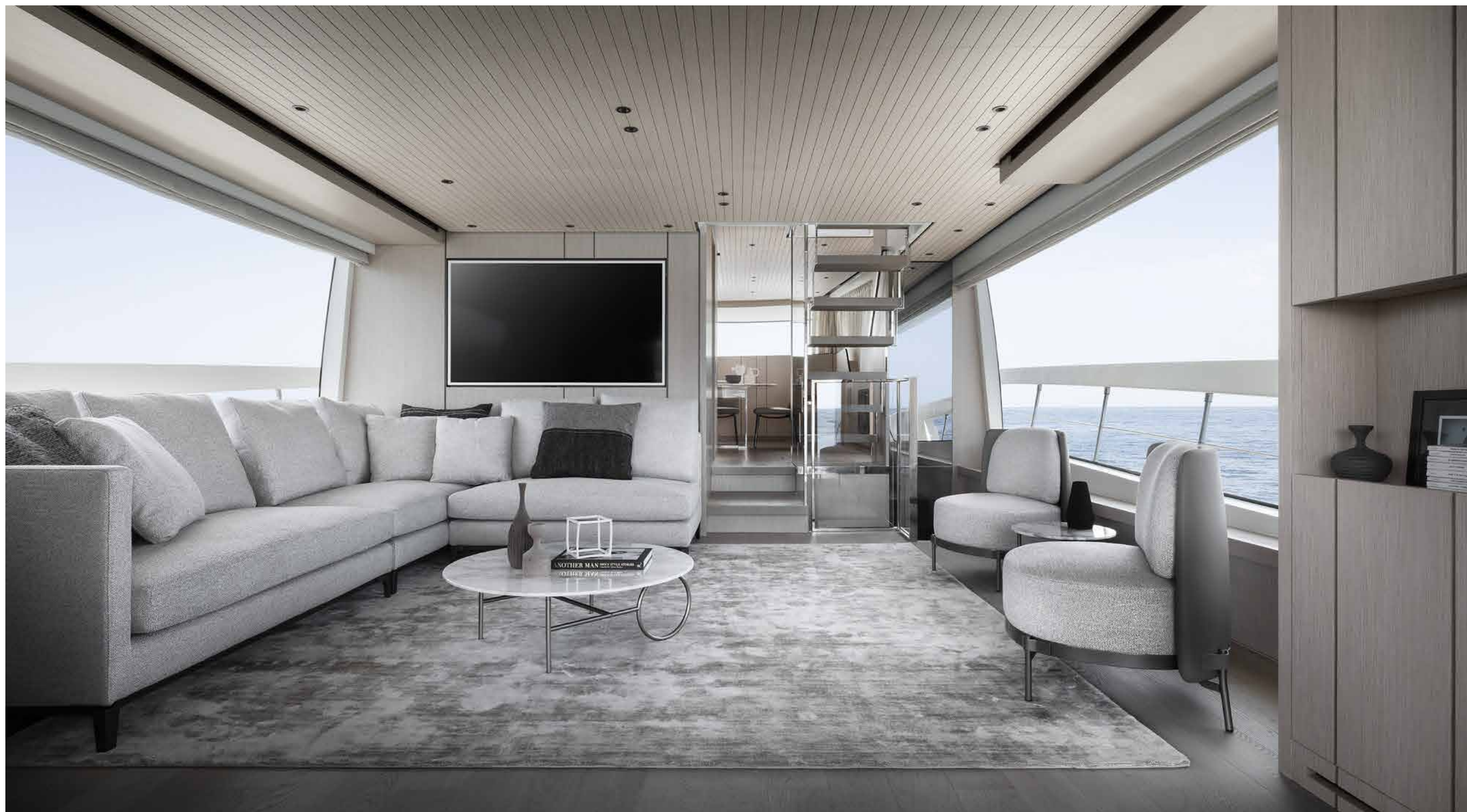








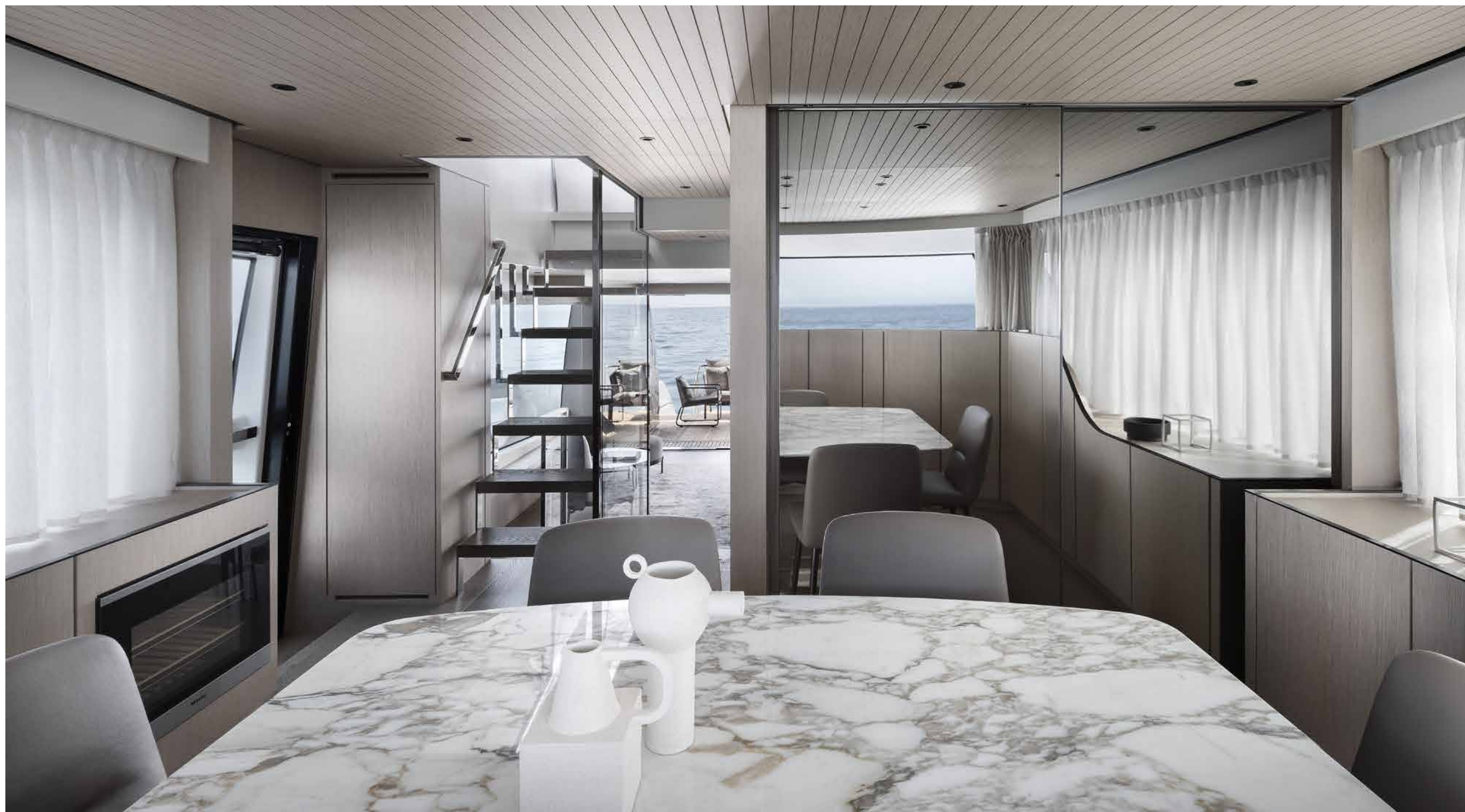














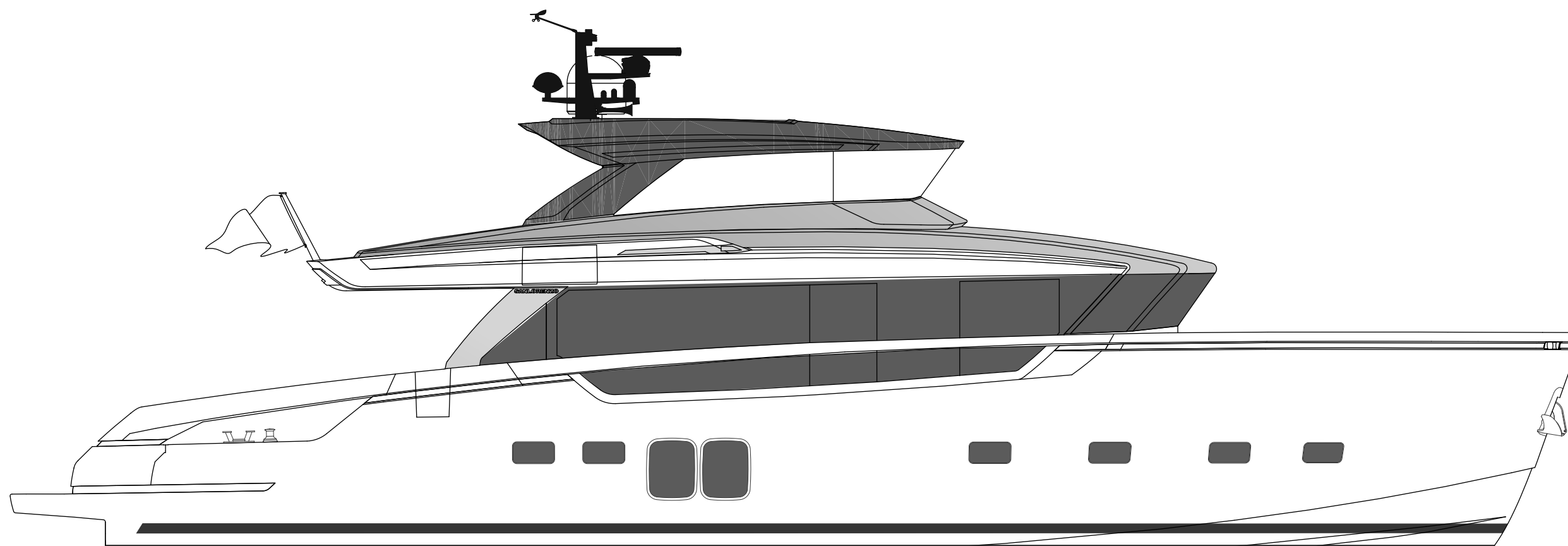




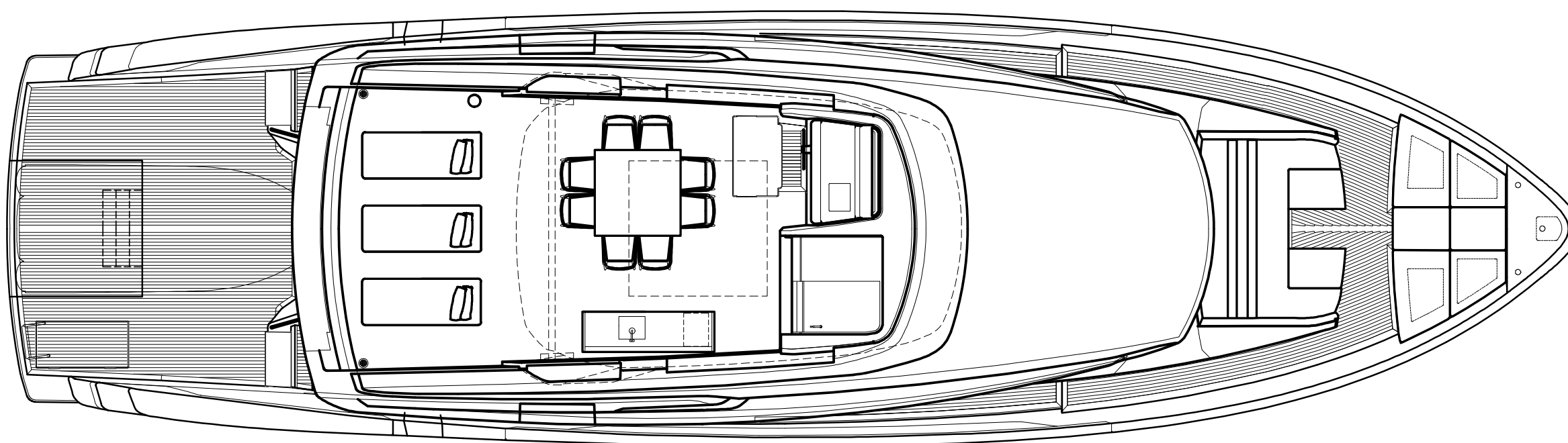




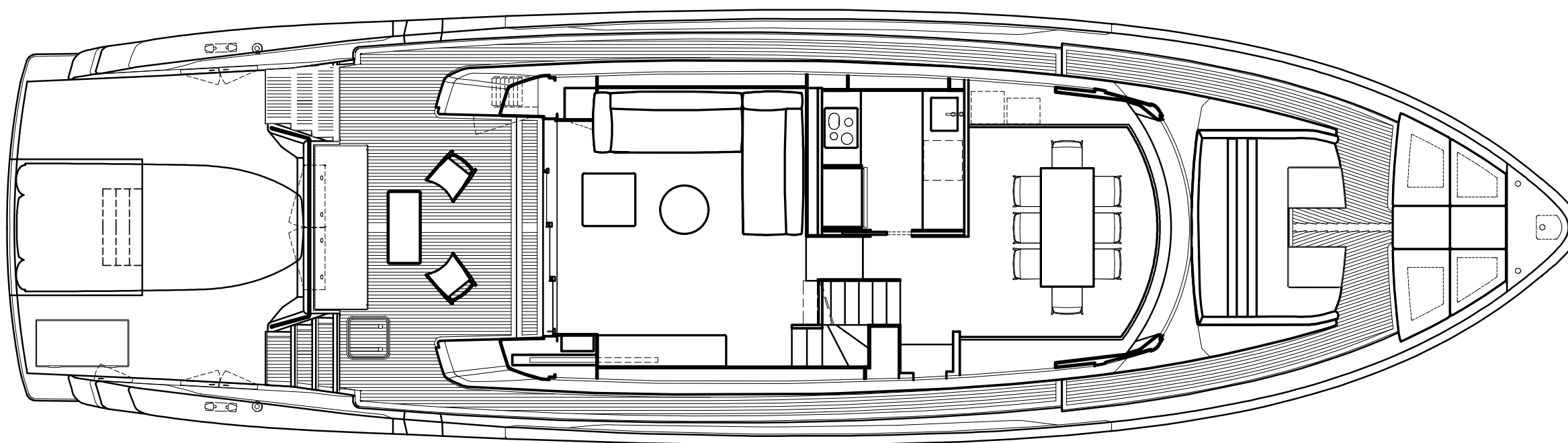
SX  
76/



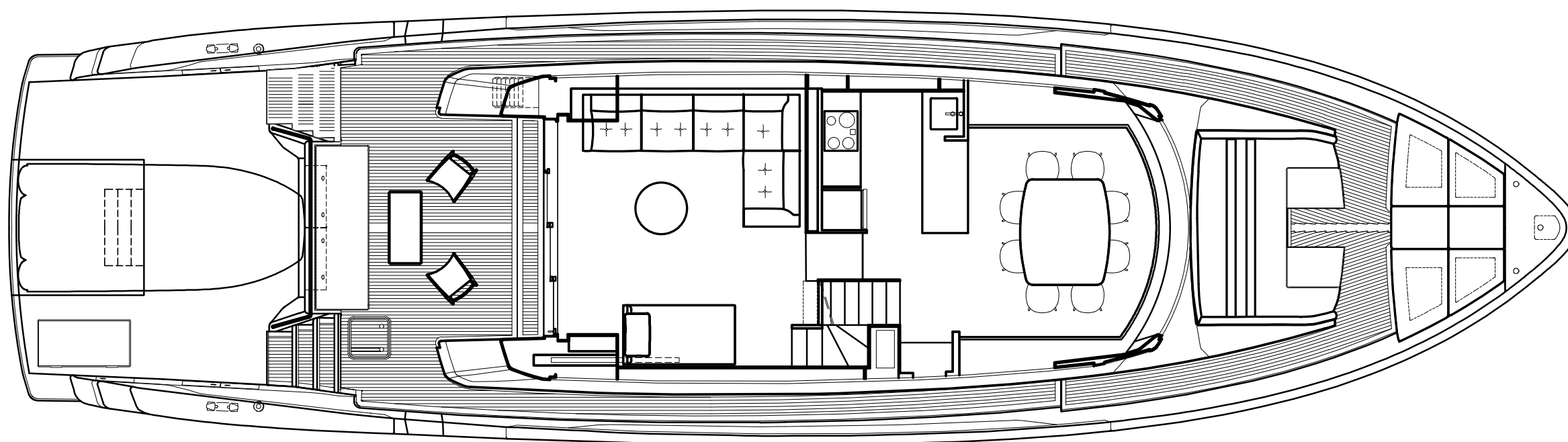




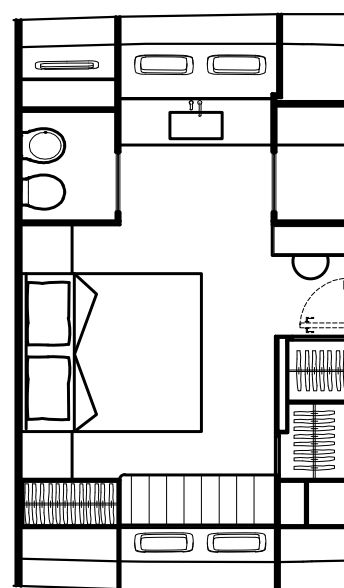
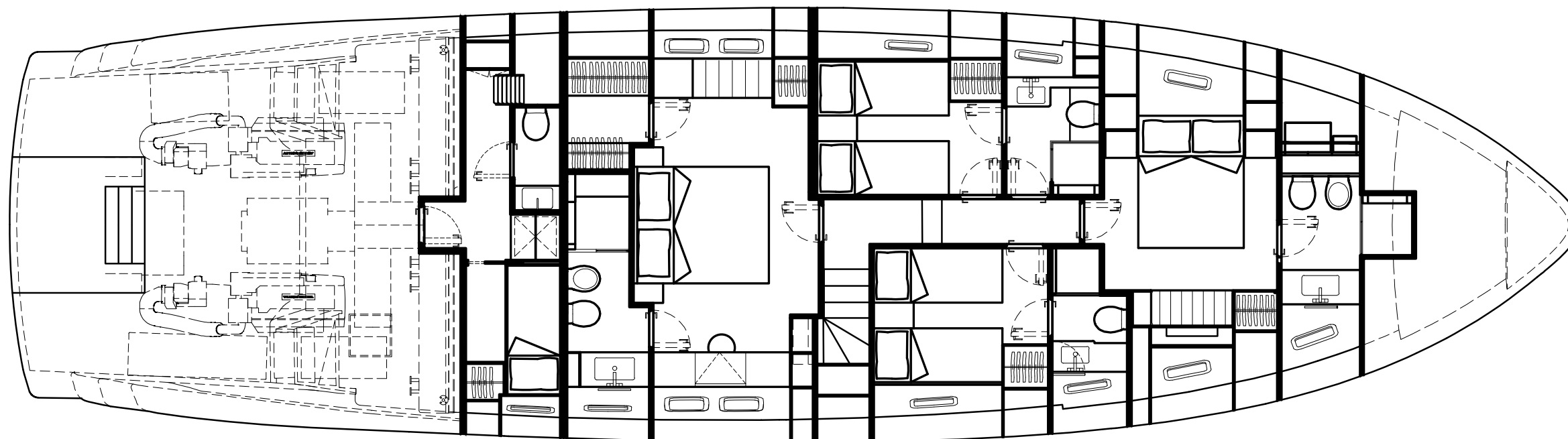




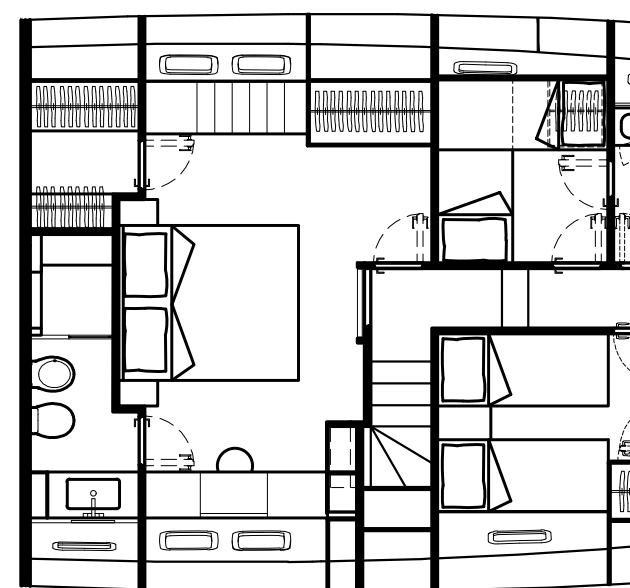




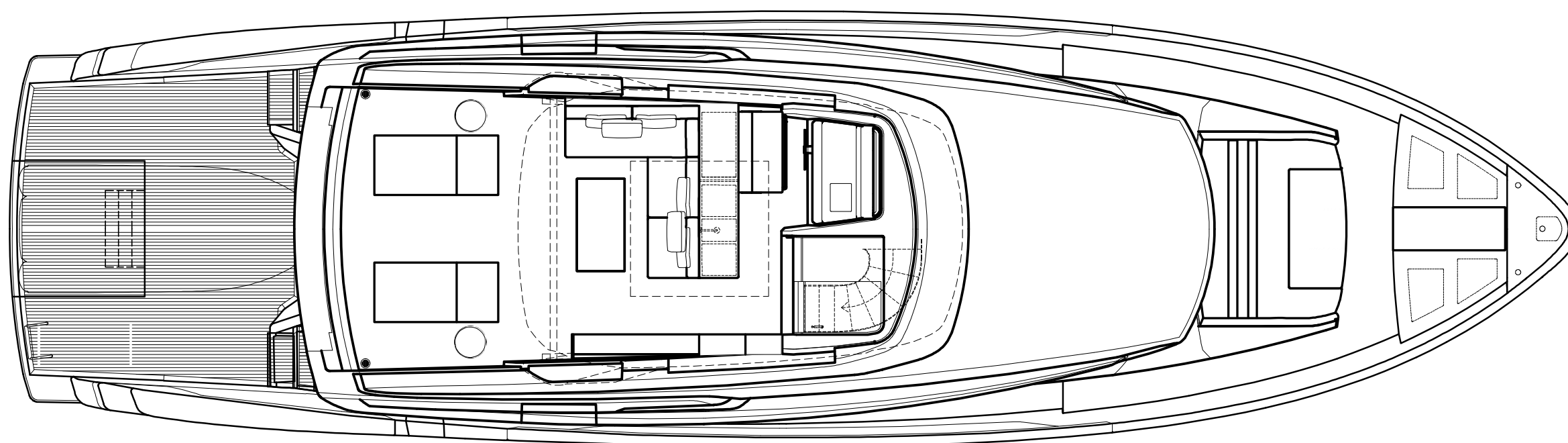




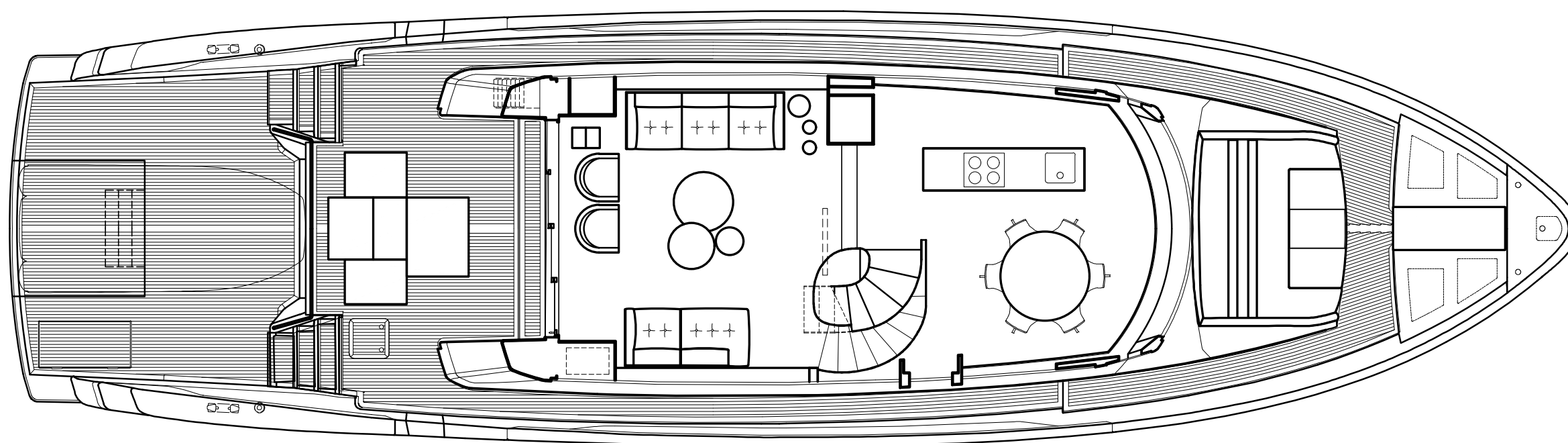
Alternative proposal  
for owner cabin C

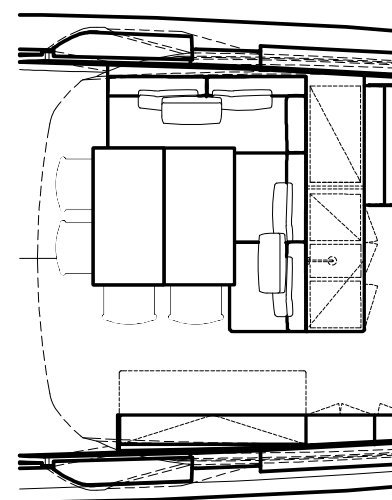
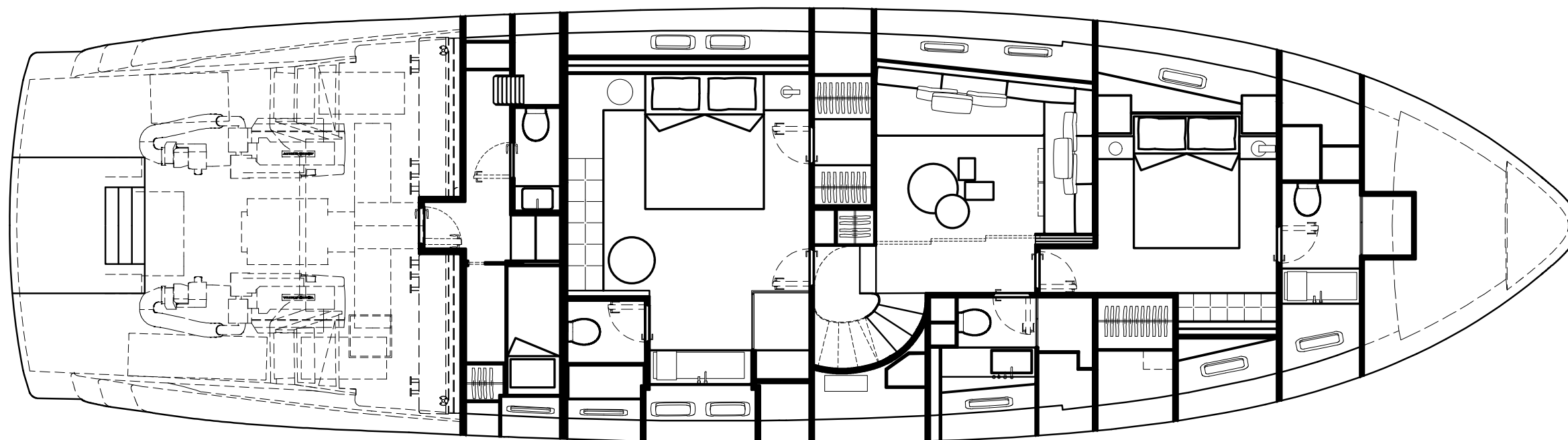


Alternative proposal  
for owner cabin B









Alternative proposal for the foyer



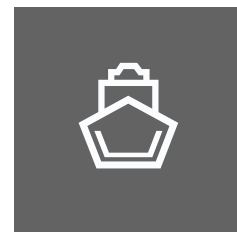
Length overall	23,75 m
Maximum beam	6,6 m
Construction height	3,07 m
Displacement @ half load (*)	58 t
Displacement @ full load (*)	64 t
Waterline length @ half load	21,05 m
Waterline length @ full load	21,15 m
Draught @ half load	1,58 m
Draught @ full load	1,65 m
Guest accommodation	8 people
Crew accommodation	2 people
Engine	2 x IPS1050 Volvo
Consumption (approx) (**)	2 x 113 l/h @ 2100 rpm
Power output @ 100% MCR (**)	2 x 588 kW @ 2300 rpm
Gearbox	2 x IPS
Transmission	IPS
Propeller	Volvo IPS
Shafts	N/A
Gensets	1 x 25 kW
Rudders	2 x IPS
Maximum speed (approx) (***)	22 kn
Cruising speed (approx.) (***)	18 kn
Economical speed (approx) (***)	10 kn
Max range @ economical speed (approx)	615 nm
Deadrise	15°
A/C power	90000 btu/h
Fuel capacity	4350 l
Fresh water capacity	1400 l
Black water capacity	400 l
Grey water capacity	400 l
Tender length	max 4,3 m
Tender weight	max 700 kg

\* Displacement data refers to a yacht with standard fit out as described in the sales specification

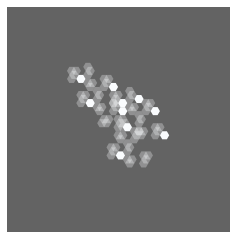
\*\* Main engine performance data and characteristics are derived from the manufacturer's specification

\*\*\* Speed data refer to a yacht with standard fit out as described in the sales specification, considering a third of liquid weight, a third of luggage weight (25kg per bed) and 5 crew members (80kg each), and without stabilization system and hard-top

It's not an investment if it's destroying the planet



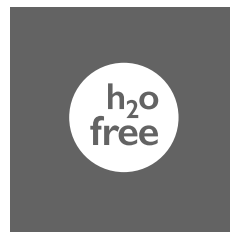
INFUSION  
LAYUP SYSTEM



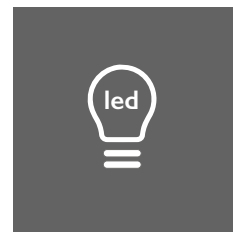
BIO RESIN  
& CORE



FSC CERTIFIED  
WOOD SUPPLY



FORMALDEHYDE  
FREE FURNITURE



LED  
LIGHTING



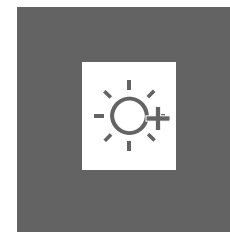
BIOCHROME®



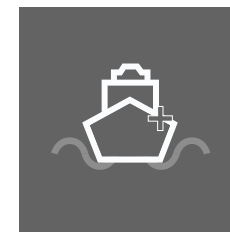
SUSTAINABLE  
LEATHER



CLASS  
A++



SOLAR  
PANELS



HULL  
EFFICIENCY



THERMAL  
INSULATION