



TARGA 53 OPEN

We're going places. Join us.



FUN NEVER FELT THIS BEAUTIFUL

“Pure, unadulterated enjoyment.” This is a sentiment that applies to all aspects of the Targa 53 OPEN – from the visual impact of its bold and beautiful design, to the exhilarating joy one feels as it rises up onto the plane and powers across open waters.

In fact, everything about the Targa 53 OPEN has been carefully considered with uninterrupted fun and freedom in mind.

Take for instance the hull, which has been specifically engineered for a smooth, soft ride, and exceptional handling.

Or the open-plan main deck, with its spacious cockpit and retractable hardtop.

Or the large hull windows fearlessly jutting towards the bow and filling each cabin with an abundance of light.

There’s no doubt about it, the Targa 53 OPEN with its muscular power and grace, is both magnificent and thrilling in every way!

LET THE GOOD TIMES ROLL

The Targa 53 OPEN is a natural-born entertainer. Whether it's a day out with the family, or casual gathering of friends, every element of its generous layout has been purposely handcrafted for a relaxed, open and enjoyable environment.

Specification highlights:

- Layout options, including 2 or 3-cabin/ 2-heads configuration
- Spacious cockpit with generous U-shaped seating
- Oversized aft sunbed
- Large garage to house a Williams 325 JetRib
- Integrated ice chamber

Optional equipment highlights:

- Aft facing 42" high brightness, waterproof TV
- Fully equipped wet bar – BBQ griddle, sink, fridge and ice maker
- Seakeeper® 6 gyroscopic stabiliser
- Space for an additional freezer or wine cooler or washer/dryer
- Integrated, powered sun canopy over aft sunbed
- Marble interior features with leather inlays





FROM OUTSIDE THE TARGA 53 OPEN
EXUDES GRACE, STYLE AND POWER









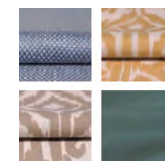




AND THE INSIDE IS AN EQUALLY MAGNIFICENT EXPERIENCE

In the spirit of building the perfect yacht at every possible level, we have also carefully created four different interior design schemes for you to choose from:

Amalfi



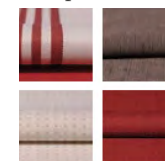
Inspired by Liguria's local architecture, this scheme exudes the sunny warmth synonymous with fragrant Italian lemon trees and the umbrella-lined shores of the Amalfi Coast.

Capri



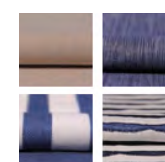
Understated, earthy colours, effortlessly combined with rich natural textures. All the hallmarks of an interior design collection that is as gentle as the Mediterranean breeze.

Hamptons



Evoking elegant vintage design cues, whilst offering a bold and contemporary interpretation of the luxury that was once the preserve of America's East Coast.

St. Tropez



An ode to the sea where all manner of deep, oceanic blues tastefully swirl with muted greys, delicate creams and classic nautical motifs.



PERFECTLY PROPORTIONED IN ALL THE RIGHT PLACES

Principal Dimensions

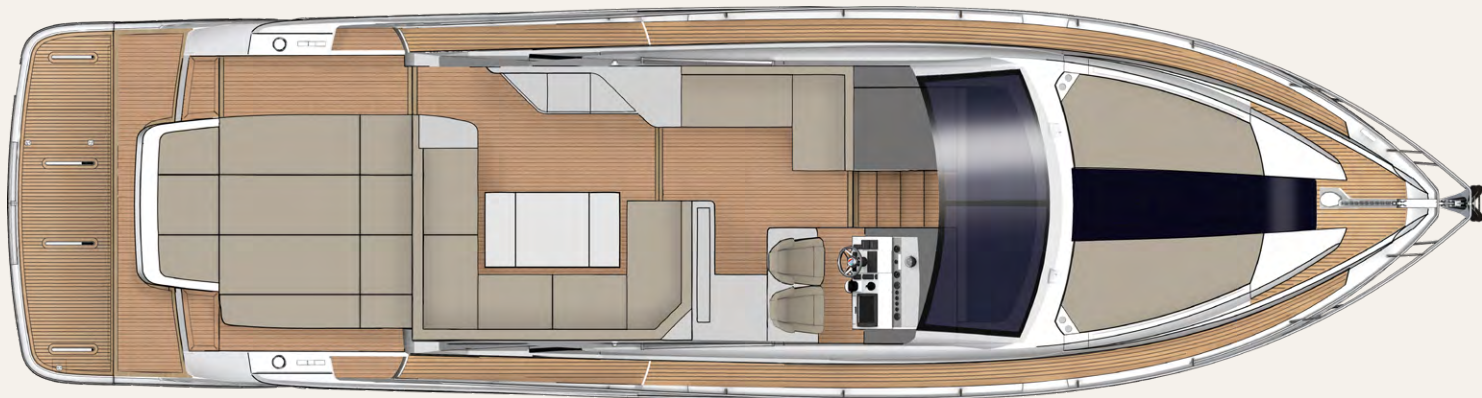
Length overall (exc. pulpit)	53'6" (16.32m)
Beam (inc. gunwale)	14'10" (4.52m)
Draught	3'11" (1.20m) unloaded
Height above waterline	15'1" (4.60m)
Transport height	15'11" (4.87m)
Dry weight (approx.)	19.19 imp. tons/21.49 US tons (19,500kg)
Fuel capacity	530 gallons/637 US gallons (2,412 litres)
Water capacity (inc. calorifier)	120 gallons/145 US gallons (550 litres)
Sleeps	4 – 6
Classification	CE Category B
Capacity	16 persons



Engines and Performance

2 x Volvo Penta D11-725 shaft drive, diesel (1450hp): 32 knots

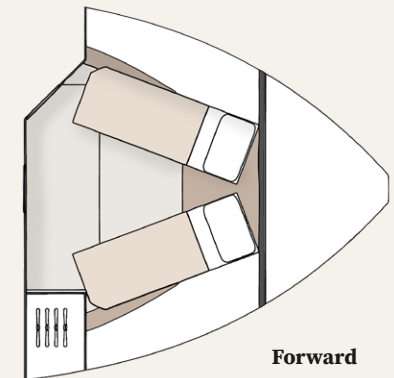
TARGA 53 OPEN MAIN DECK



TARGA 53 OPEN LOWER DECK

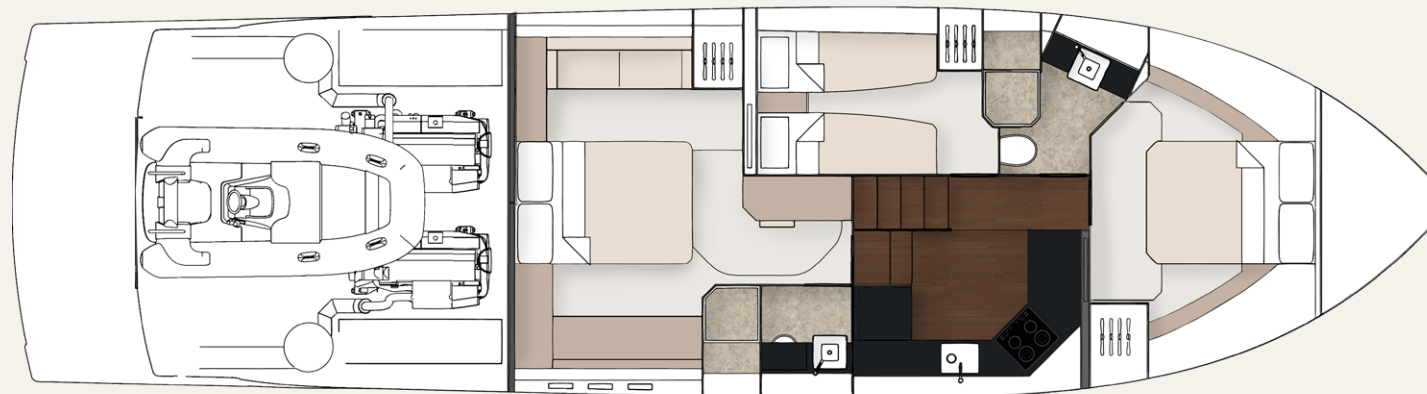


2 Cabin

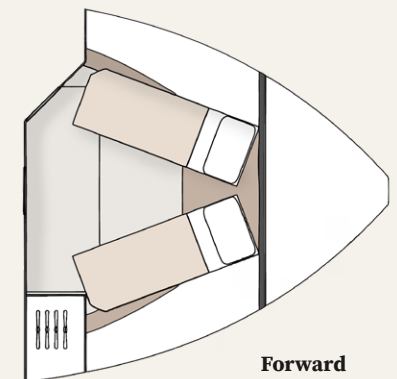


Forward
cabin scissor
berth option

TARGA 53 OPEN LOWER DECK



3 Cabin



**Forward
cabin scissor
berth option**



JOIN THE FAIRLINE FAMILY.

Visit **fairline.com** and start to see a world of possibilities.

Come to us for adventure. Come to us for design and heritage. And come to us for forward thinking. But most of all, come and experience our acclaimed Dealership network.

Each Appointed Fairline Dealer is a professional, thriving business, working with your best interests at heart and using their intimate local knowledge to your advantage. Yes, they will provide you with a trusted service, but also friendship and care beyond the call of duty.



Fairline Argentina
Fairline Australia
Fairline Baltic
Fairline Benelux & West Germany
Fairline Beirut
Fairline Brazil
Fairline Channel Islands
Fairline Chesapeake
Fairline Colombia
Fairline Côte d'Azur
Fairline Croatia

Fairline Cyprus
Fairline Denia
Fairline Eastbourne
Fairline Eastern Canada
Fairline Egypt
Fairline Empuriabrava
Fairline Finland
Fairline Florida
Fairline Great Lakes
Fairline Greece
Fairline Hong Kong

Fairline Ibiza
Fairline India
Fairline Israel
Fairline Italy
Fairline Korea
Fairline London
Fairline Maldives
Fairline Mallorca
Fairline Malta
Fairline Menorca
Fairline Mexico

Fairline Middle East
Fairline Monaco
Fairline New York
Fairline New Zealand
Fairline Northwest
Fairline Norway
Fairline Philippines
Fairline Poland
Fairline Poole
Fairline Portugal
Fairline Russia

Fairline Singapore
Fairline South China
Fairline South Germany & Austria
Fairline Southampton
Fairline Southern Spain
Fairline Sweden
Fairline Switzerland
Fairline Thailand
Fairline Turkey
Fairline Ukraine

© FAIRLINE YACHTS LTD 2020. ALL RIGHTS RESERVED. FAIRLINE AND TARGA ARE REGISTERED TRADEMARKS OF FAIRLINE YACHTS LTD. TOGETHER WITH ALL TEXT AND IMAGES CONTAINED IN THIS PUBLISHED MATERIAL, THEY ARE PROTECTED BY COPYRIGHT AND MAY NOT BE PRODUCED IN ANY FORM WITHOUT THE EXPRESS WRITTEN PERMISSION OF THE COPYRIGHT OWNERS. Published by Fairline Yachts Ltd, Oundle, PE8 4HN, England. Fairline Yachts constantly seek ways of improving specifications, design and production. Therefore, alterations take place on a continuous basis. Whilst every effort is made to produce up-to-date literature, the descriptions, specifications, illustrations and photographs in this brochure should not be regarded as a definitive guide to current specifications, nor does it constitute an offer for the sale of any particular boat. Performance estimates are given in good faith, but are in no way guaranteed for any particular boat. Dirt on the bottom of the boat, damage to propellers, engine tuning, external water and air temperatures and the weight of crew, fuel and water carried can all adversely affect performance. For these and other reasons we can give no performance guarantees.