

SUPERYACHT

SANLORENZO

XSP

ACE/

XSP  
ACE/





XSP  
ACE/





XSP  
ACE/



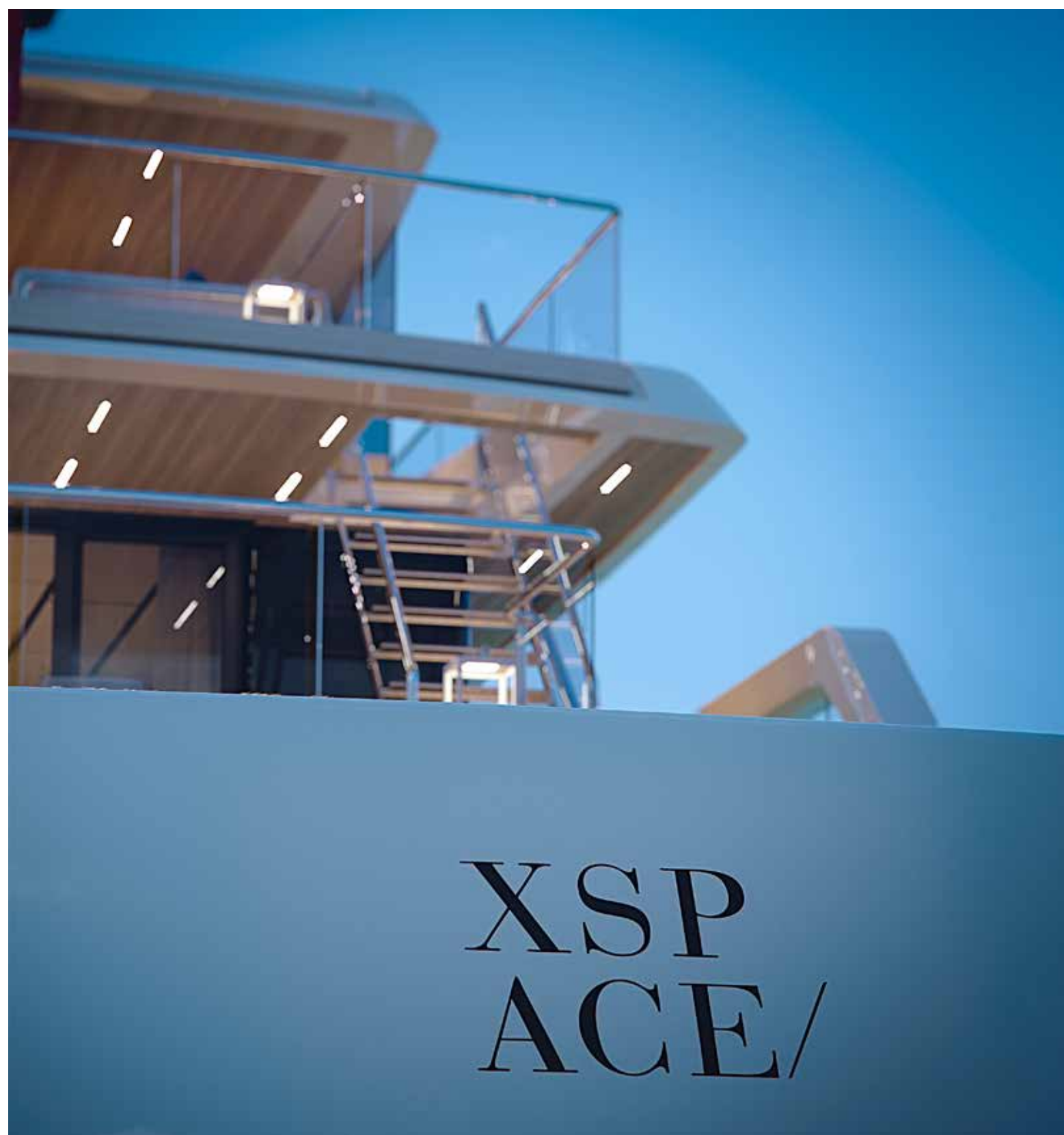








XSP  
ACE/





XSP  
ACE/





XSP  
ACE/





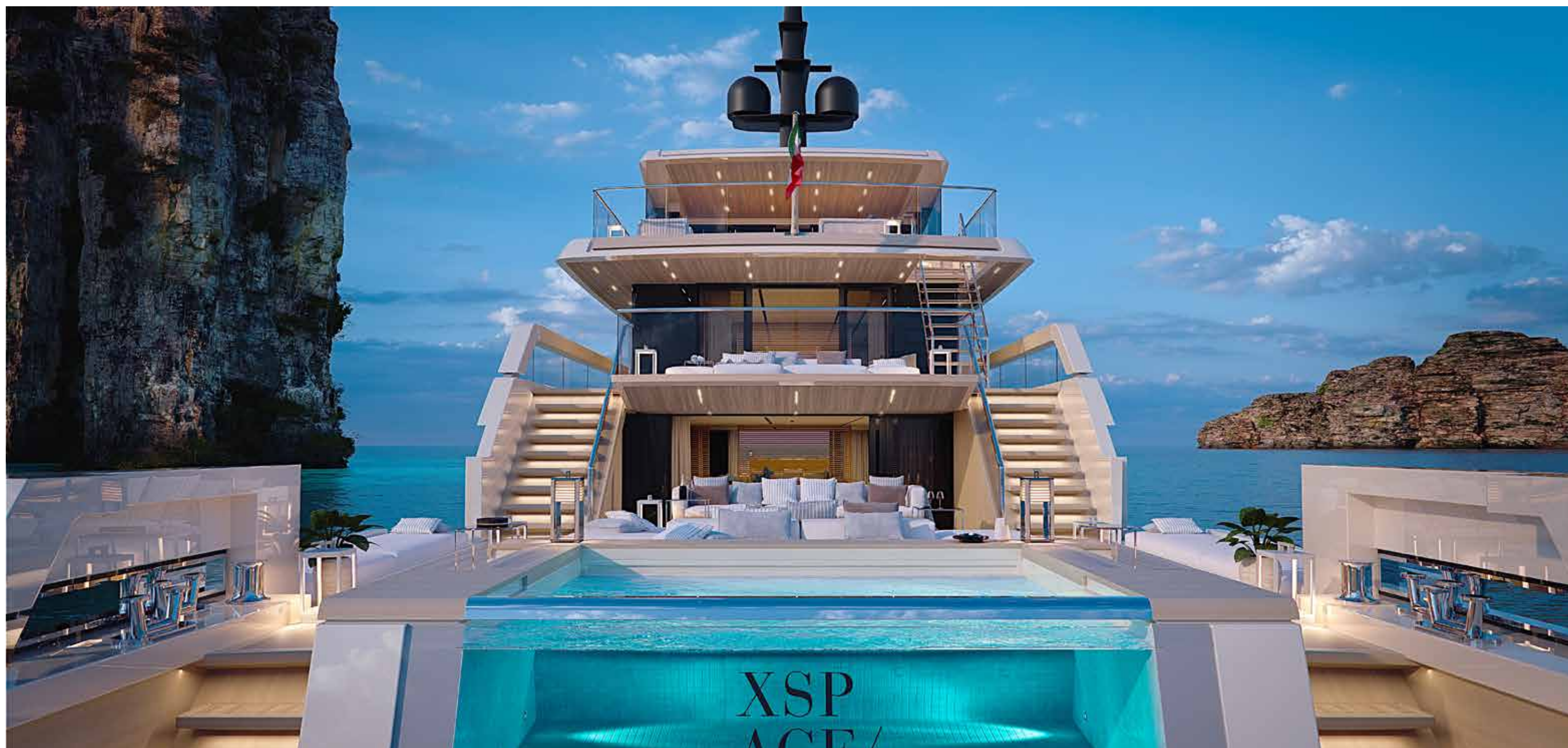








XSP  
ACE/





XSP  
ACE/









XSP  
ACE/





XSP  
ACE/





XSP  
ACE/

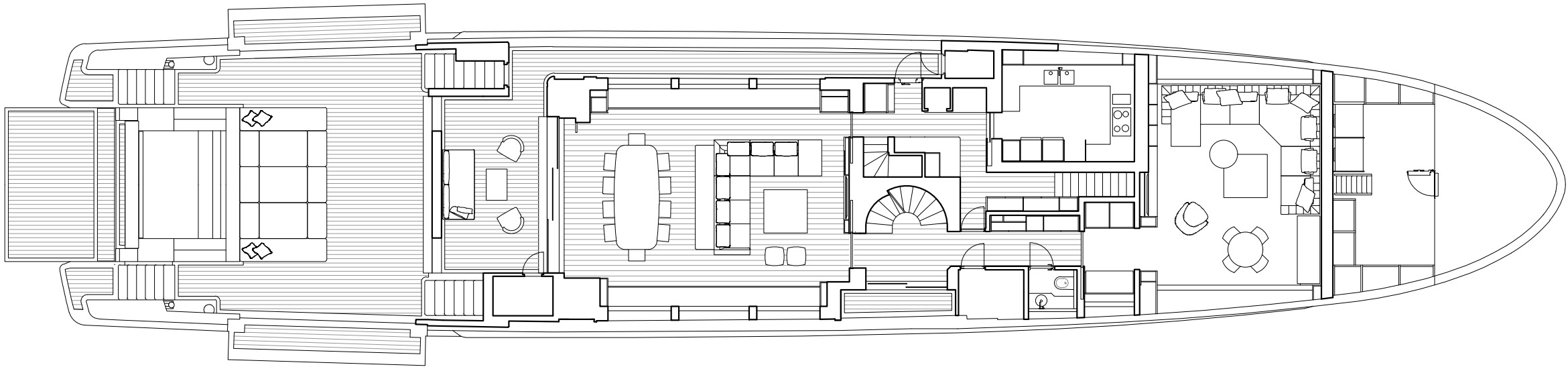




step on  
board

X-SPACE









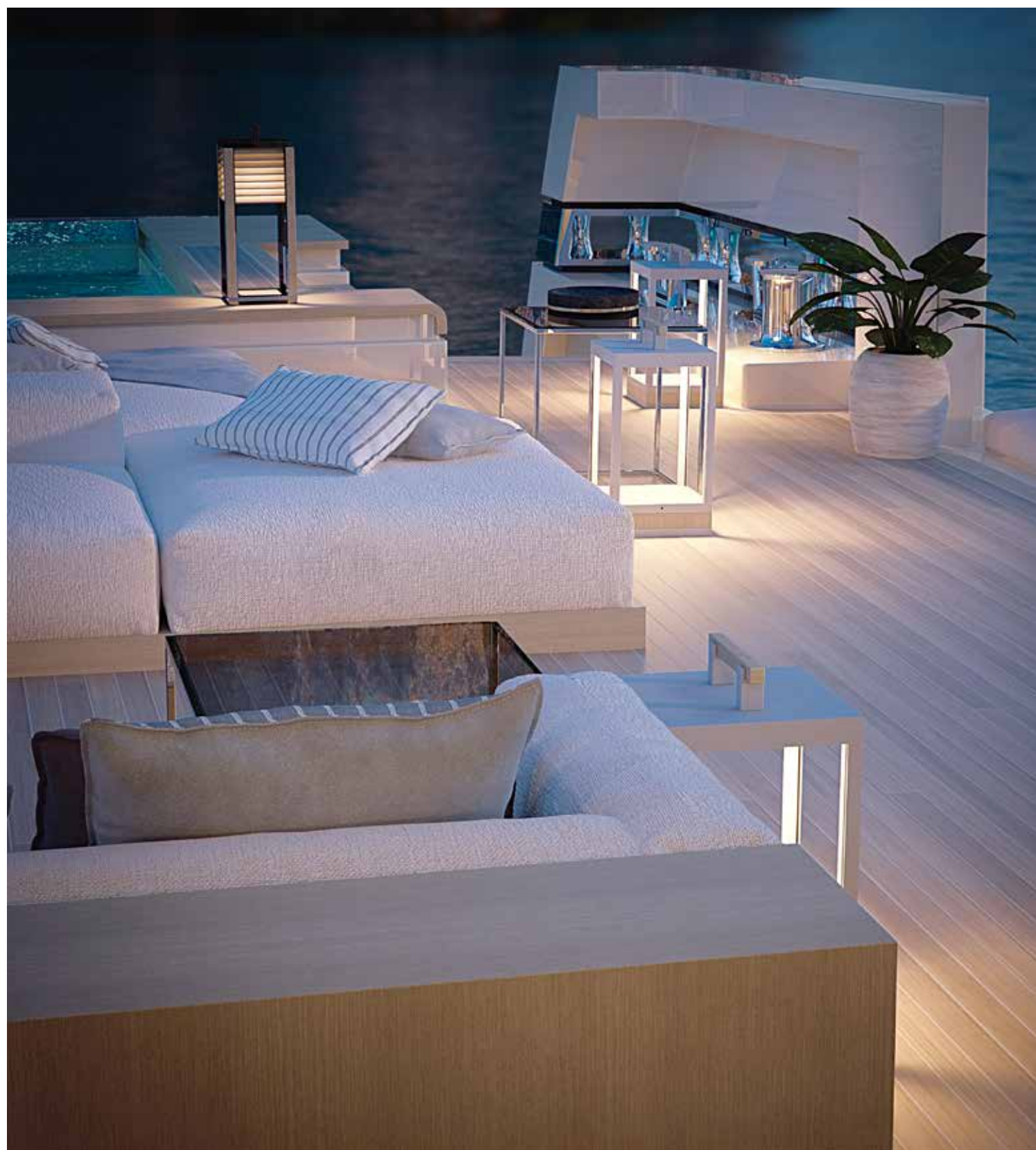




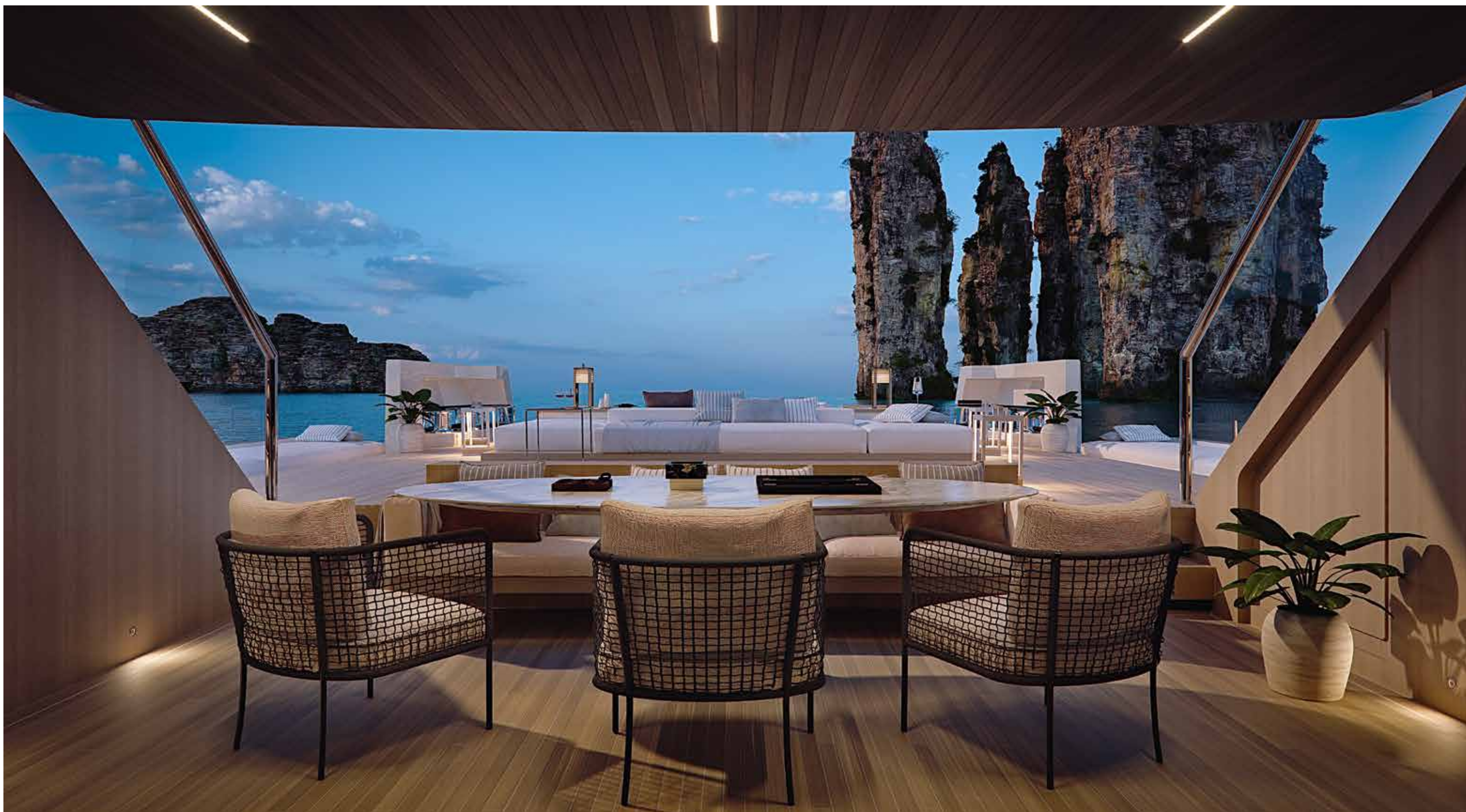












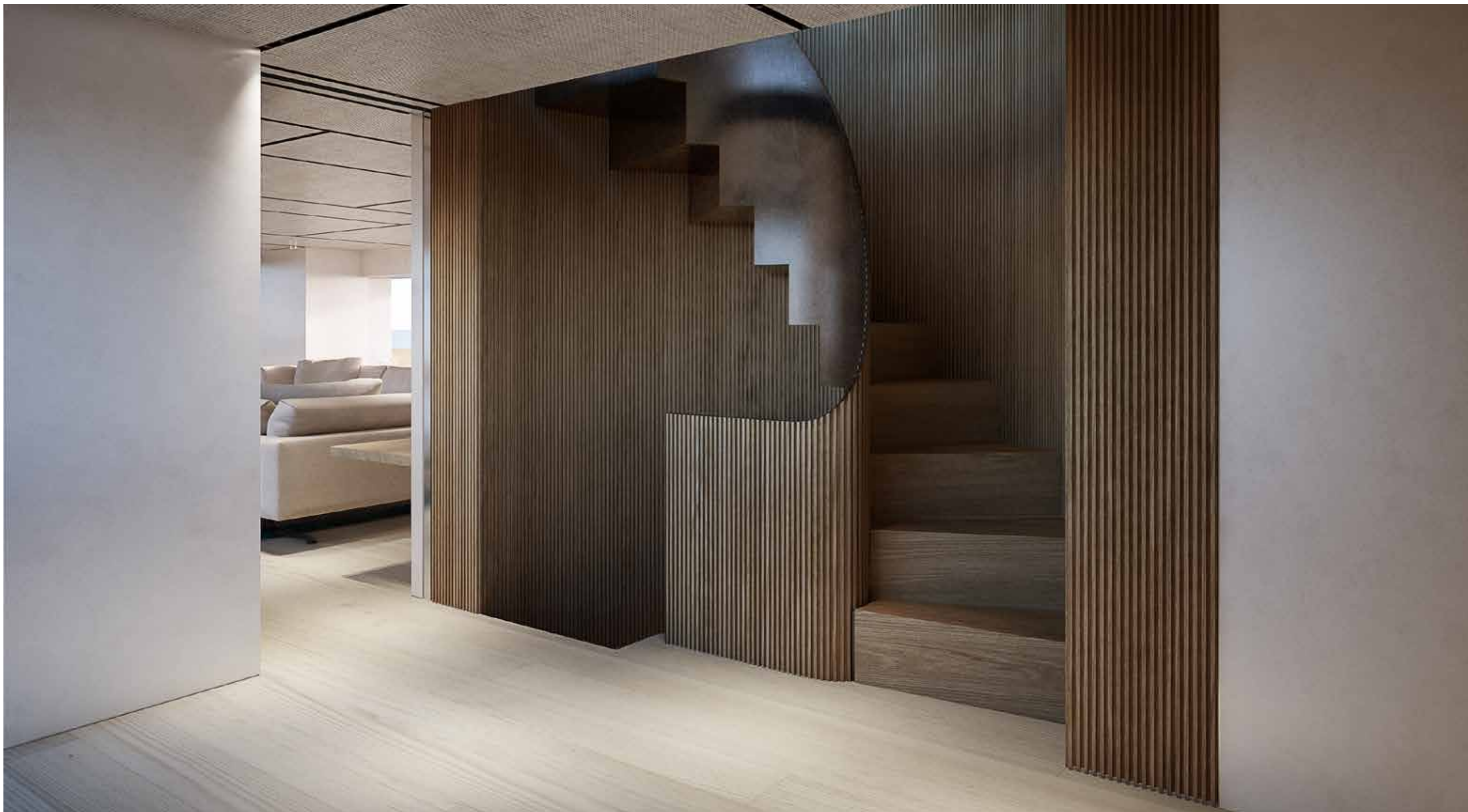




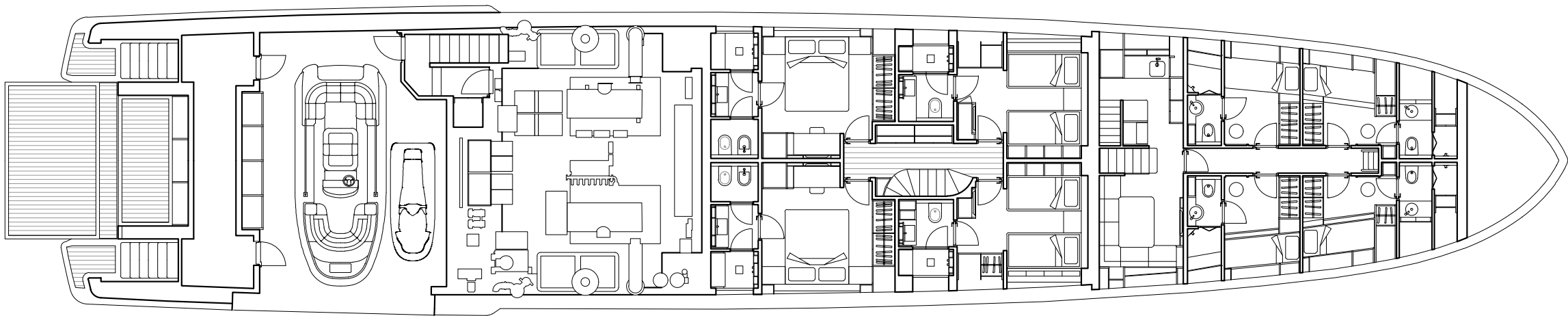








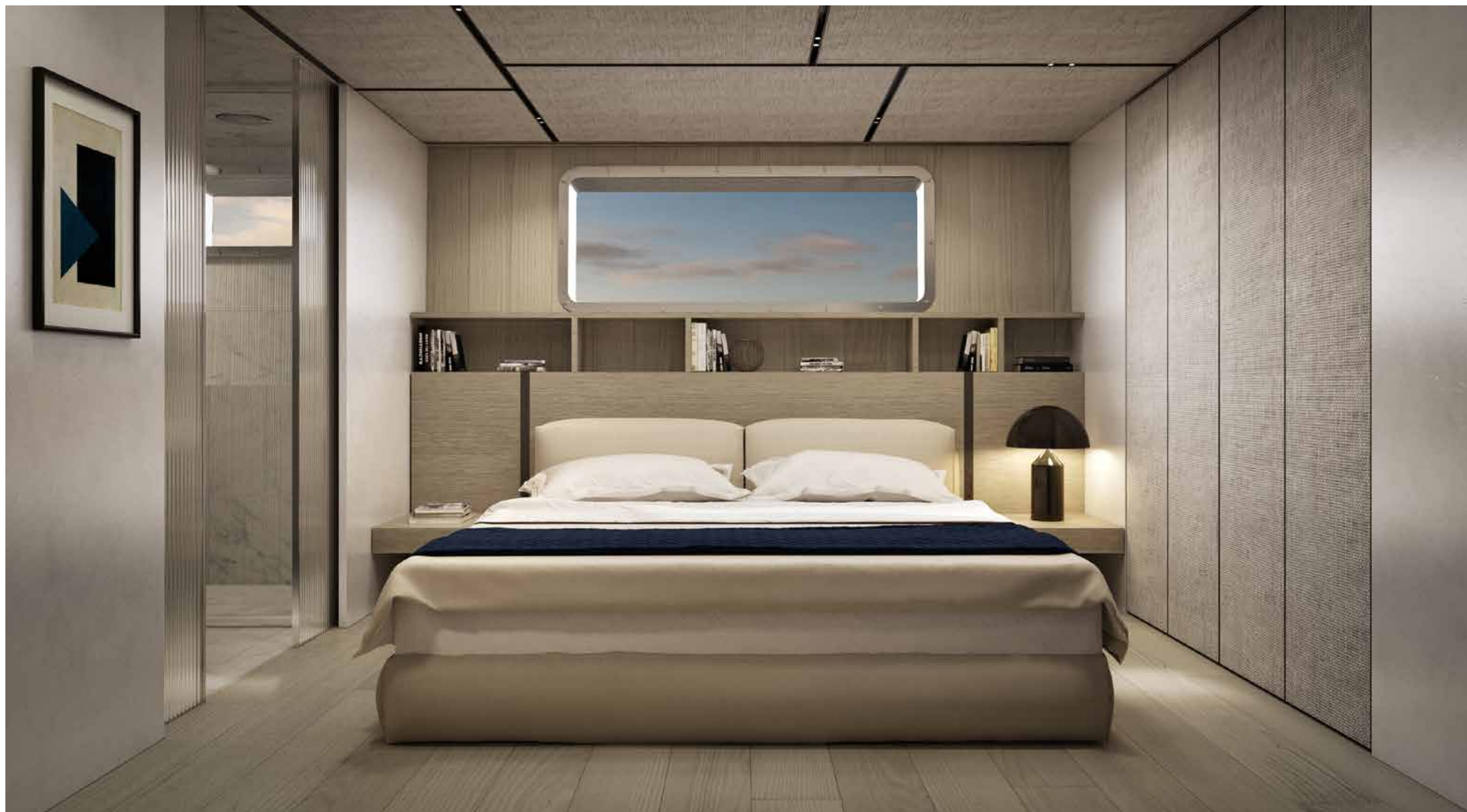












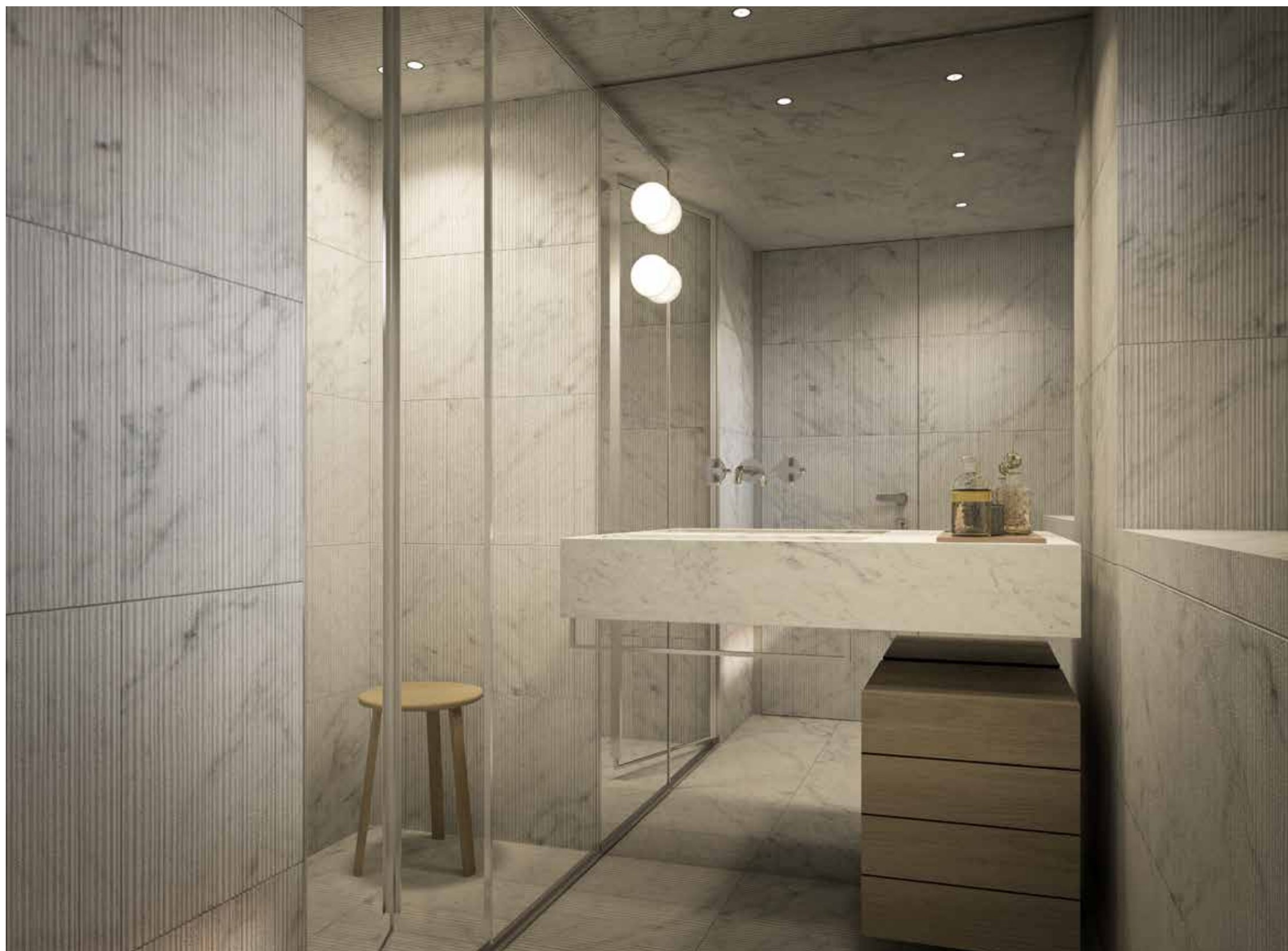




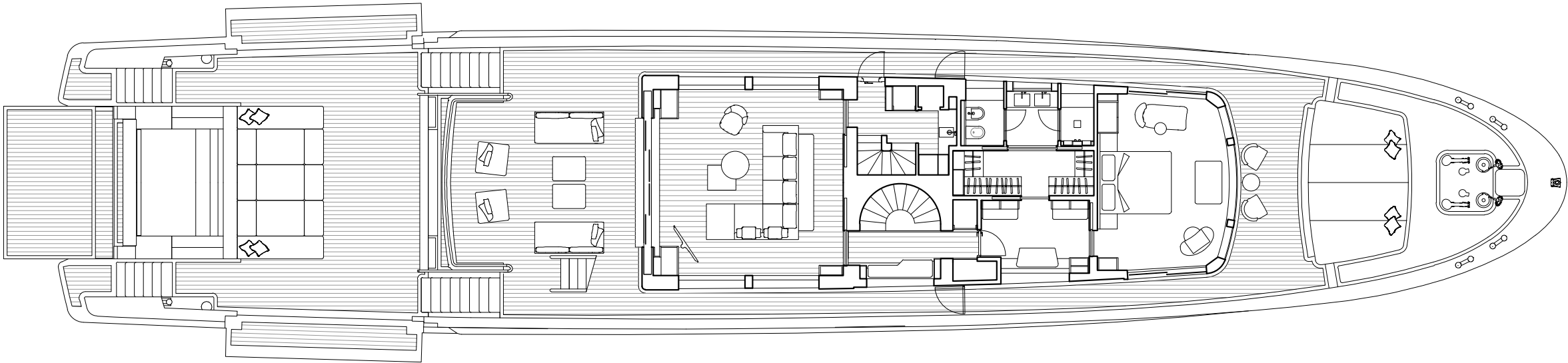












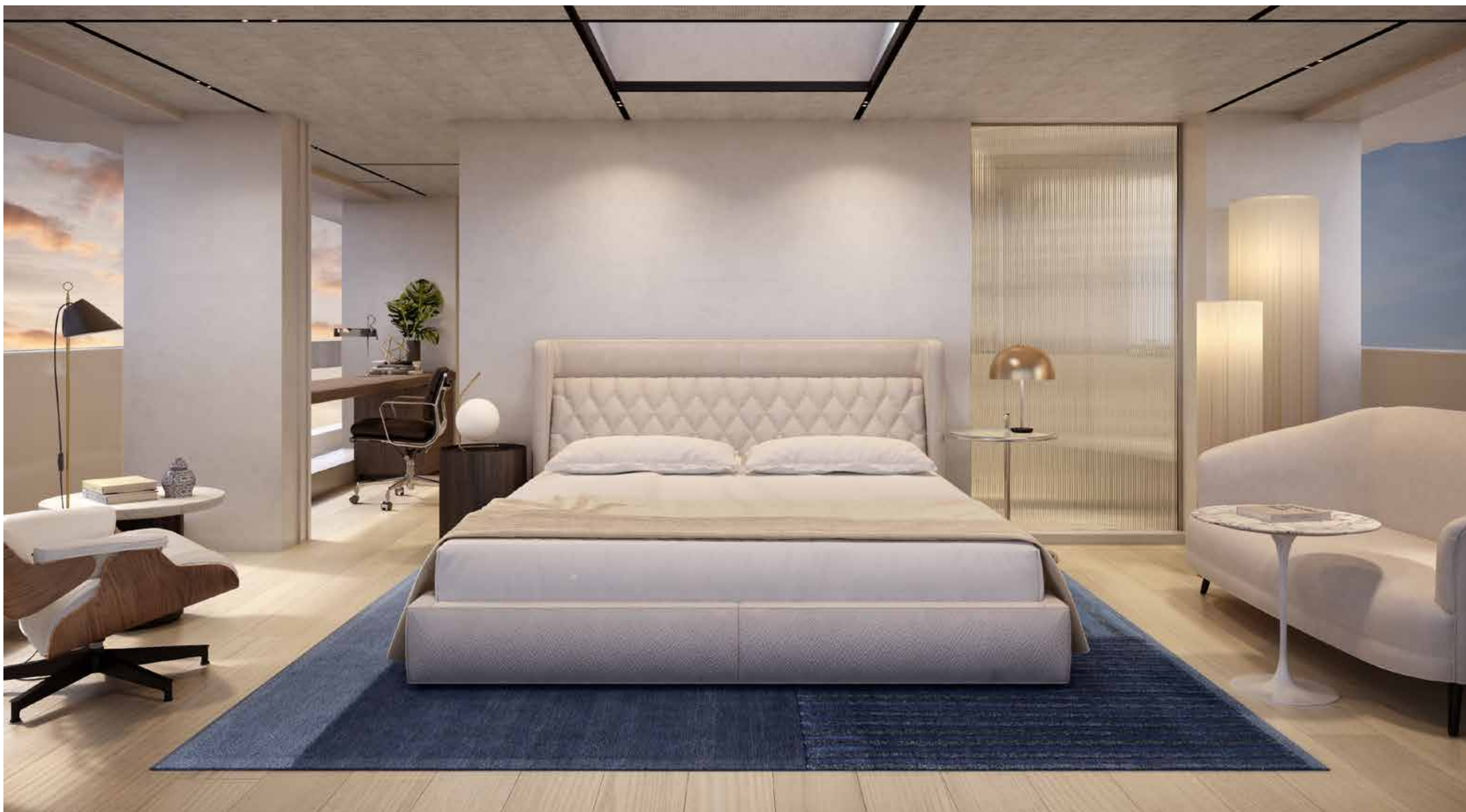




















38. Upper deck – bow area

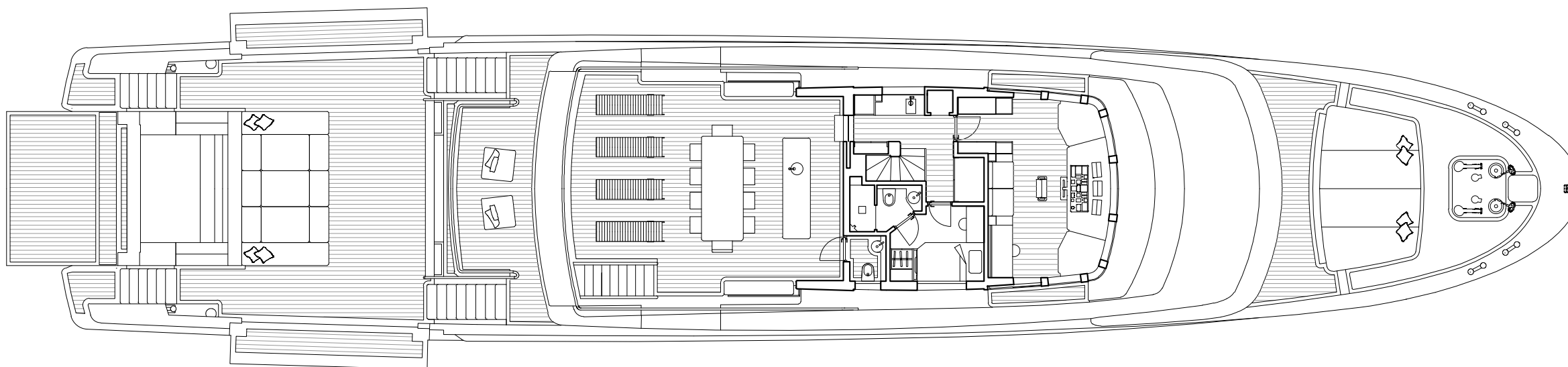








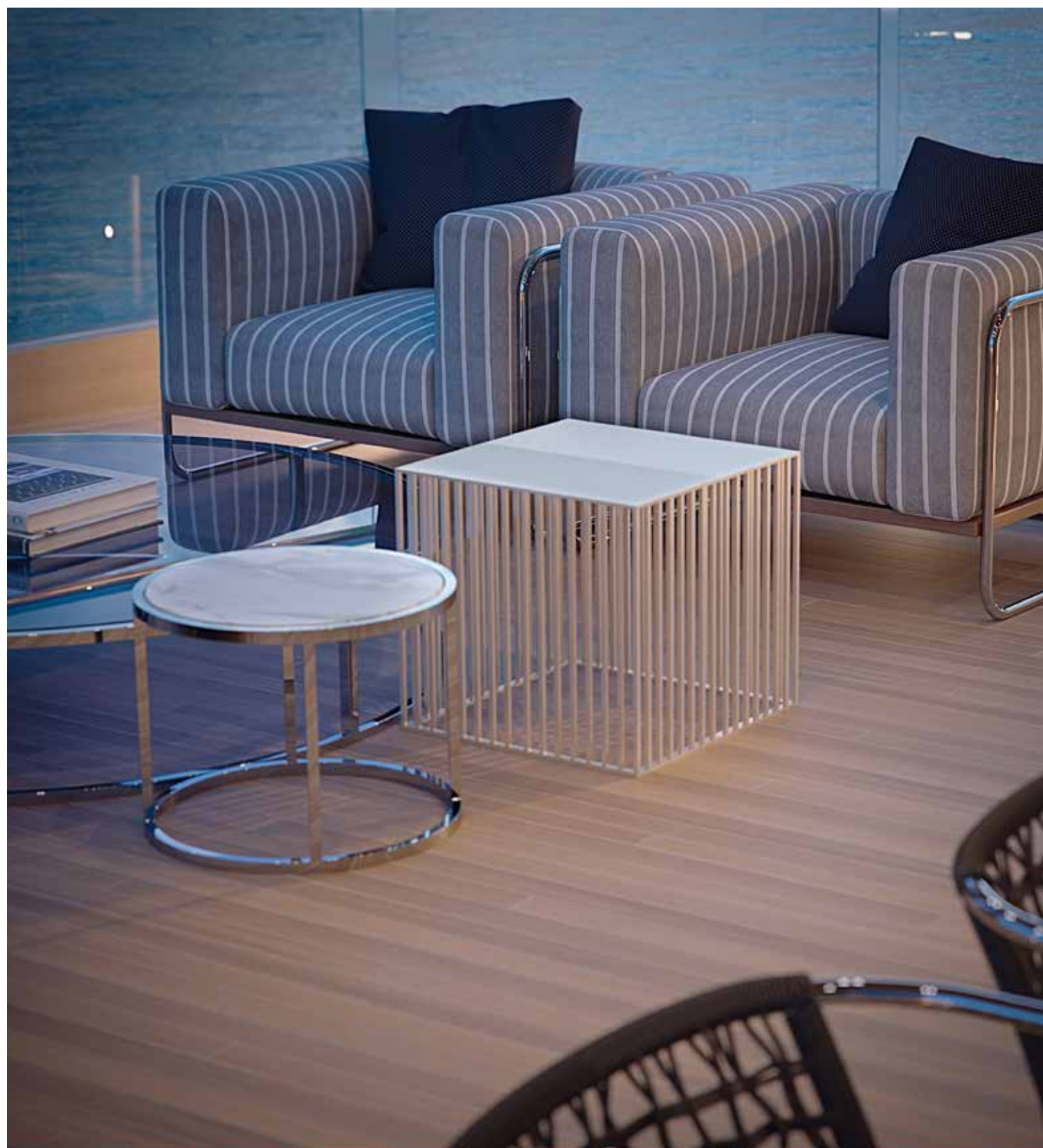














Length Overall	43.70 m
Maximum beam	8.80 m
Draught @ full load	2.80 m
Gross Tonnage	495 GT
Hull	Steel
Superstructure	Aluminium
Guest Accommodation	10 people / 12 people OPT
Crew Accommodation	8 people / 9 people OPT
Engine	2 x MAN 12V 1066 kW
Gensets	2 x 118 kW
Maximum Speed (approx.) (*)	15 kn
Comfort Speed (approx.) (*)	12.5 kn
Economical speed (approx) (*)	10 kn
Max range @ economical speed (approx.)	3,5 nm
Fuel capacity	50.000 l

\*Technical data refer to a yacht with standard layout as described in the sales specification



This brochure shall not be regarded as a contractual offer regarding the sale of yachts from the shipyard to individuals or companies. All the information contained in this brochure, including without limitation any technical or performance data, pictures, and drawings, are mere indications with no contractual value.

This document is based on the information available at the time it is published. In spite of the commitment aimed at guaranteeing maximum possible accuracy, the information contained herein may not cover all the details and any technical-commercial modifications introduced after printing, or may describe features that are not present.