

YACHT

SANLORENZO

SL
106/A

SL 106/A



SL 106/A



SL 106/A



SL 106/A



SL 106/A



SL
106/A



SL 106/A



SL 106/A



SL 106/A



SL
106/A



10. Cockpit

SL106/ ASYMMETRIC

SL
106/A



SL
106/A



12. Salon

SL106/ ASYMMETRIC

SL
106/A



13. Salon

SL106/ ASYMMETRIC

SL
106/A



14. Salon

SL106/ ASYMMETRIC

SL
106/A



SL
106/A



16. Dining area

SL106/ ASYMMETRIC

SL
106/A



17. Owner's cabin

SL106/ ASYMMETRIC

SL
106/A



18. Owner's cabin

SL106/ ASYMMETRIC

SL
106/A



19. Owner's bathroom

SL106/ ASYMMETRIC

SL 106/A



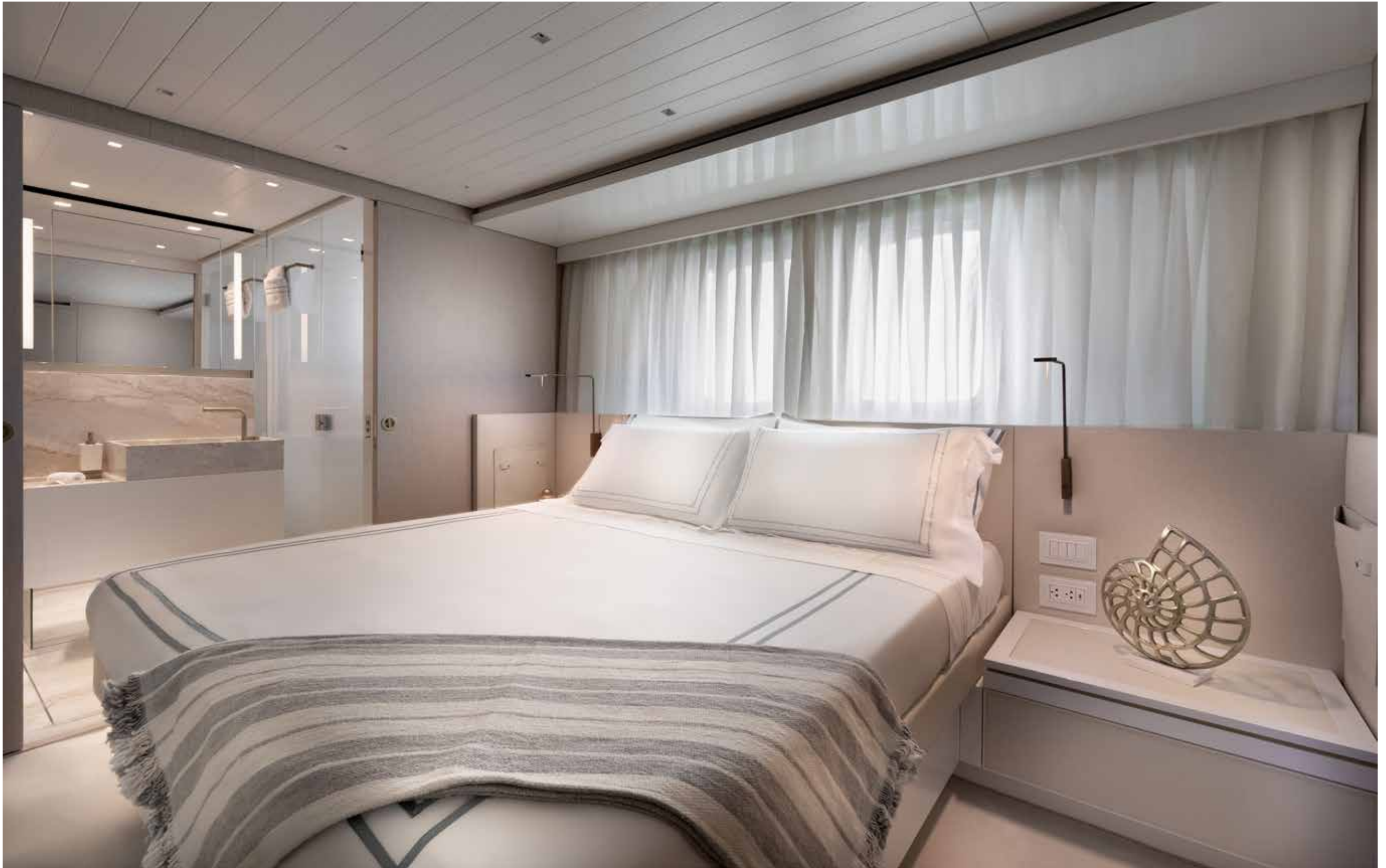
SL
106/A



SL
106/A



SL
106/A



23. VIP cabin

SL106/ ASYMMETRIC

SL
106/A



24. VIP cabin

SL106/ ASYMMETRIC

SL 106/A



25. Flying bridge

SL106/ ASYMMETRIC

SL
106/A



26. Flying bridge

SL106/ ASYMMETRIC

SL 106/A



SL
106/A



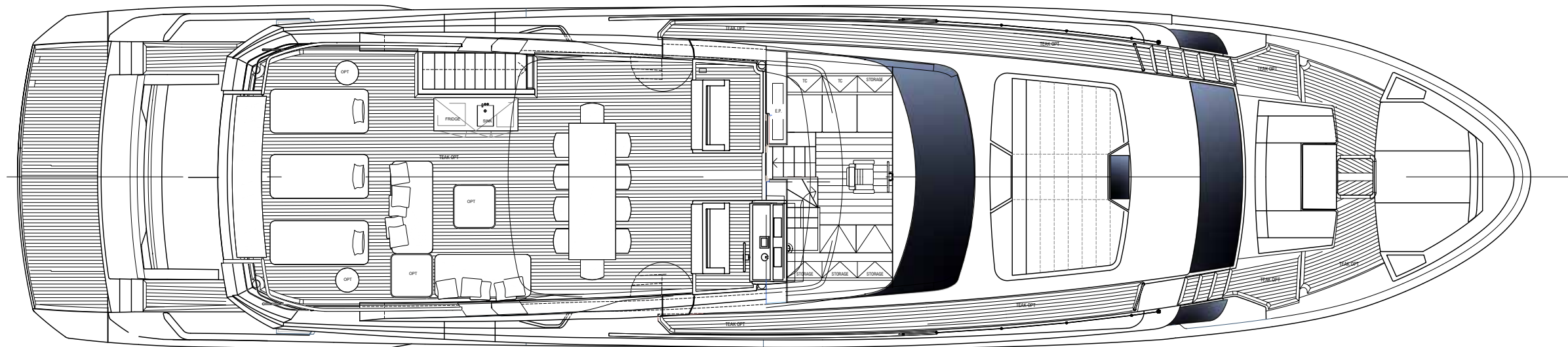
28. Bow area

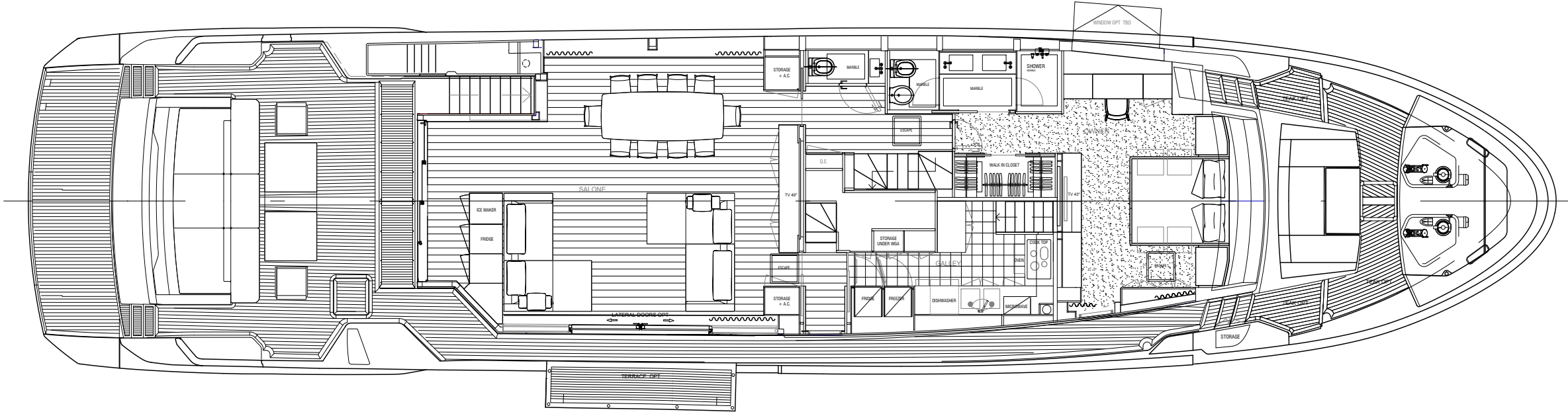
SL106/ ASYMMETRIC

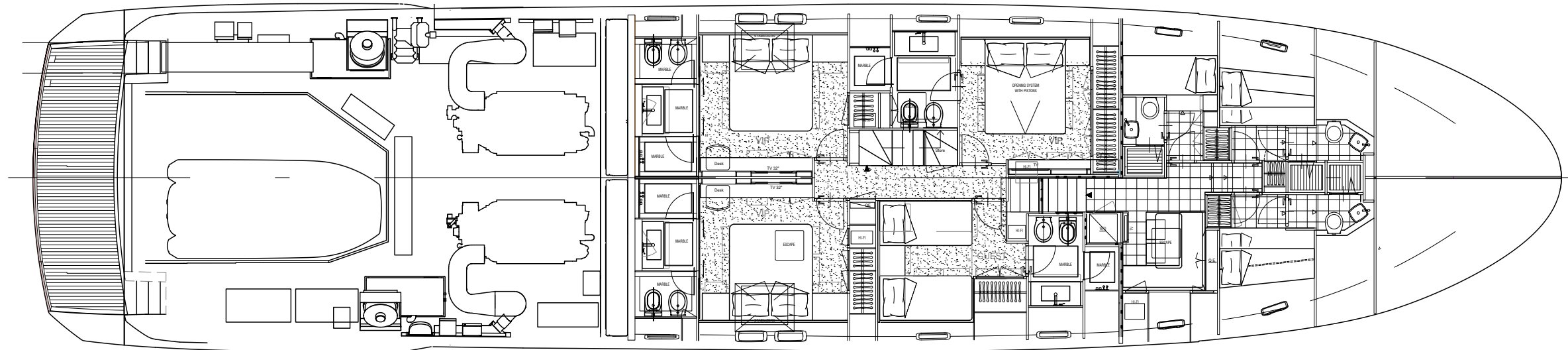
SL
106/A



SL 106/A







Length overall	32,28 m
Maximum beam	7,06 m
Construction height	3,22 m
Displacement @ half load (*)	118 t
Displacement @ full load (*)	126 t
Waterline length @ half load	26.58 m
Waterline length @ full load	26.65 m
Draught @ half load	1,93 m
Draught @ full load	2,00 m
Guest accommodation	10 people
Crew accommodation	5 people
Engine	a) 2 x CAT Acert C32B – 2400 HP b) 2 x MTU 16V 2000 M96 – 2434 HP
Consumption (approx.) (**)	a) 2 x 354 l/h @ 2100 rpm b) 2 x 375 l/h @ 2200 rpm
Power output @ 100% MCR (**)	a) 2 x 1790 kW @ 2300 rpm b) 2 x 1790 kW @ 2450 rpm
Gearbox	a) 2 x ZF 3070A – R=2,75:1 b) 2 x ZF 3060A – i=3,00:1
Transmission	Direct shaft line
Propeller	5 blades NiBrAl “S” class
Shafts	Aquamet 17 or equivalent
Gensets	2 x 45 kW
Rudders	AISI 316 stainless steel
Maximum speed (approx.) (***)	28 kn
Cruising speed (approx.) (***)	24 kn
Economic speed (approx.) (***)	10 kn
Max range @ economic speed (approx.)	1280 nm
Deadrise	16°
A/C power	180000 btu/h
Fuel capacity	12100 l
Fresh water capacity	1900 l
Black water capacity	900 l
Grey water capacity	850 l

* Displacement data refers to a yacht with standard layout as described in the sales specification
** Main engine performance data and characteristics are derived from the manufacturer's specification
***Speed data refer to a yacht with standard layout as described in the sales specification, considering a third of liquid weight, a third of luggage weight (25kg per bed) and 5 crew members (80kg each).

This brochure shall not be regarded as a contractual offer regarding the sale of yachts from the shipyard to individuals or companies. All the information contained in this brochure, including without limitation any technical or performance data, pictures, and drawings, are mere indications with no contractual value.

This document is based on the information available at the time it is published. In spite of the commitment aimed at guaranteeing maximum possible accuracy, the information contained herein may not cover all the details and any technical-commercial modifications introduced after printing, or may describe features that are not present.