

YACHT

SANLORENZO

SP
110/

SP
110/



SP
110/



SP
110/



SP
110/



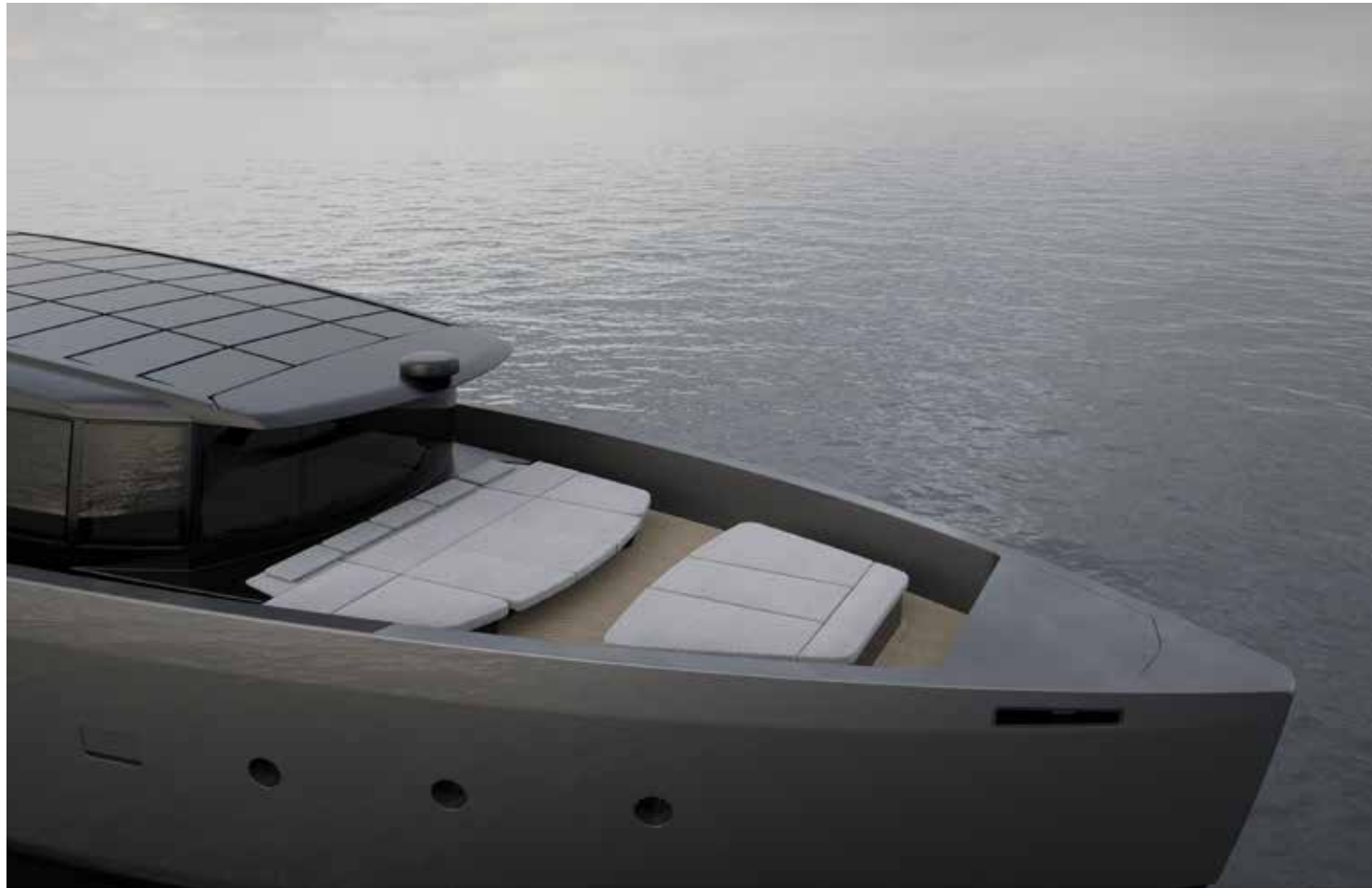
SP
110/



SP
110/



SP
110/



SP
110/



SP
110/



SP
110/



SP
110/



SP
110/



SP
110/



SP
110/



SP 110/



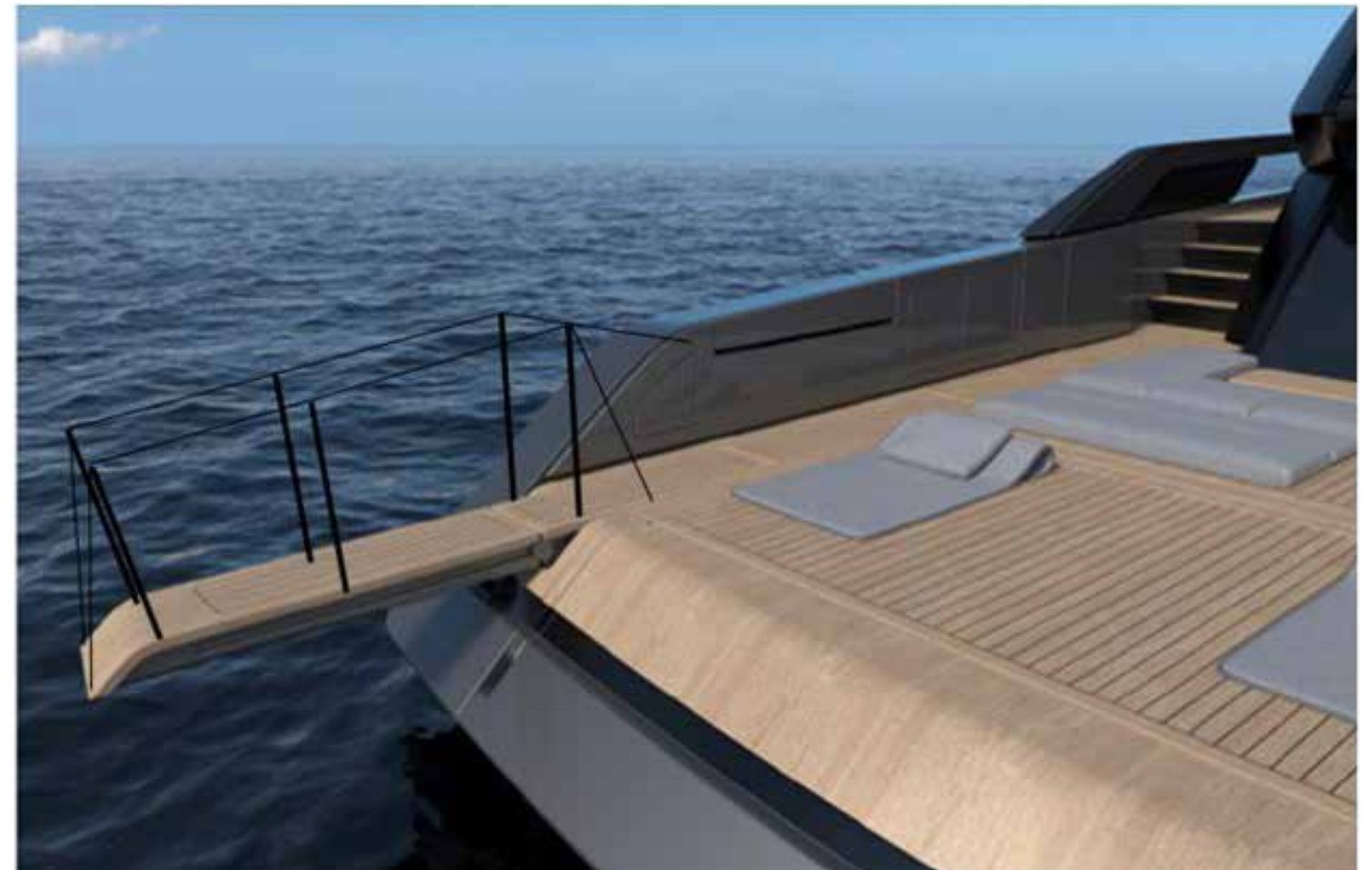
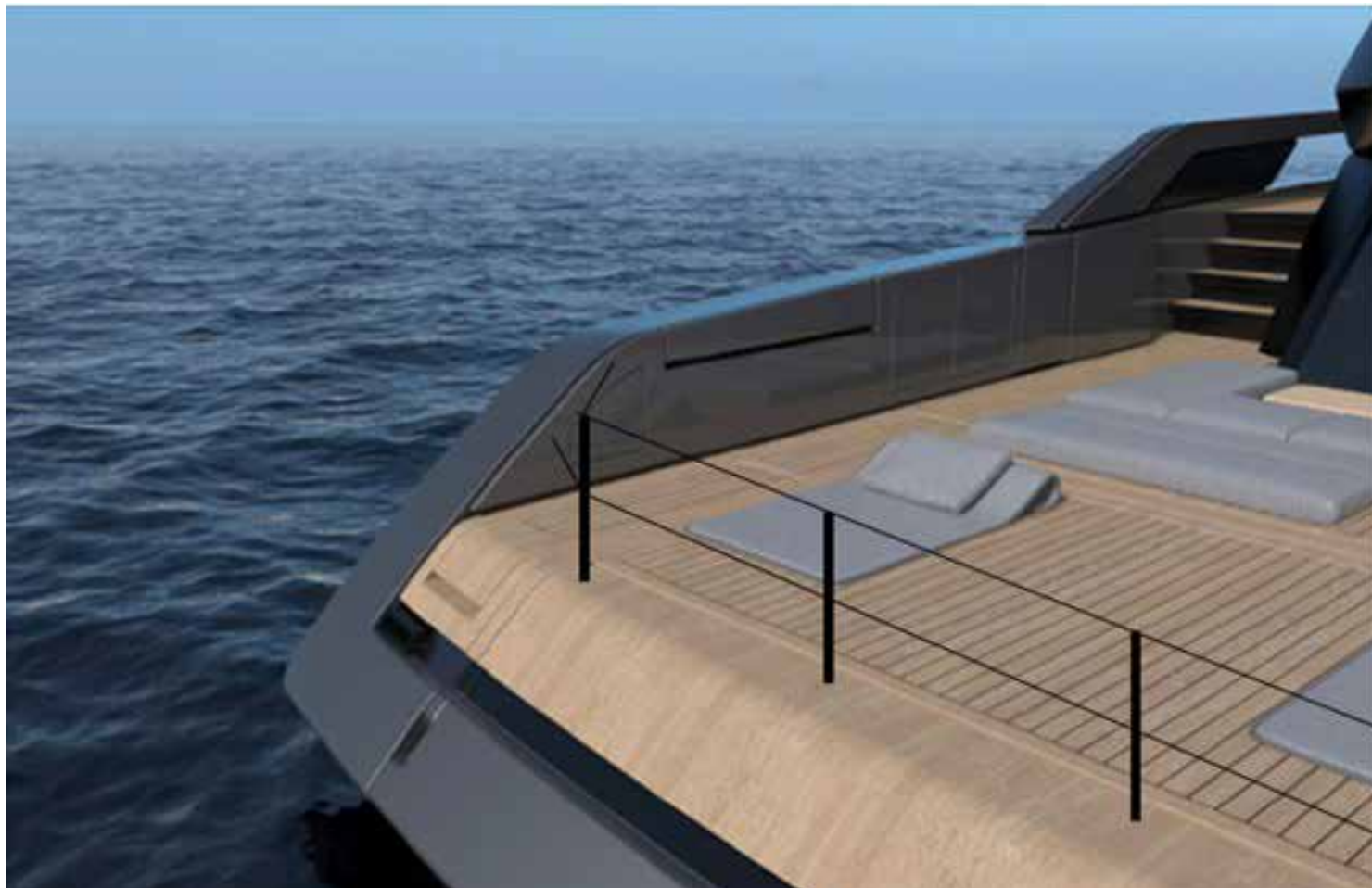
SP
110/



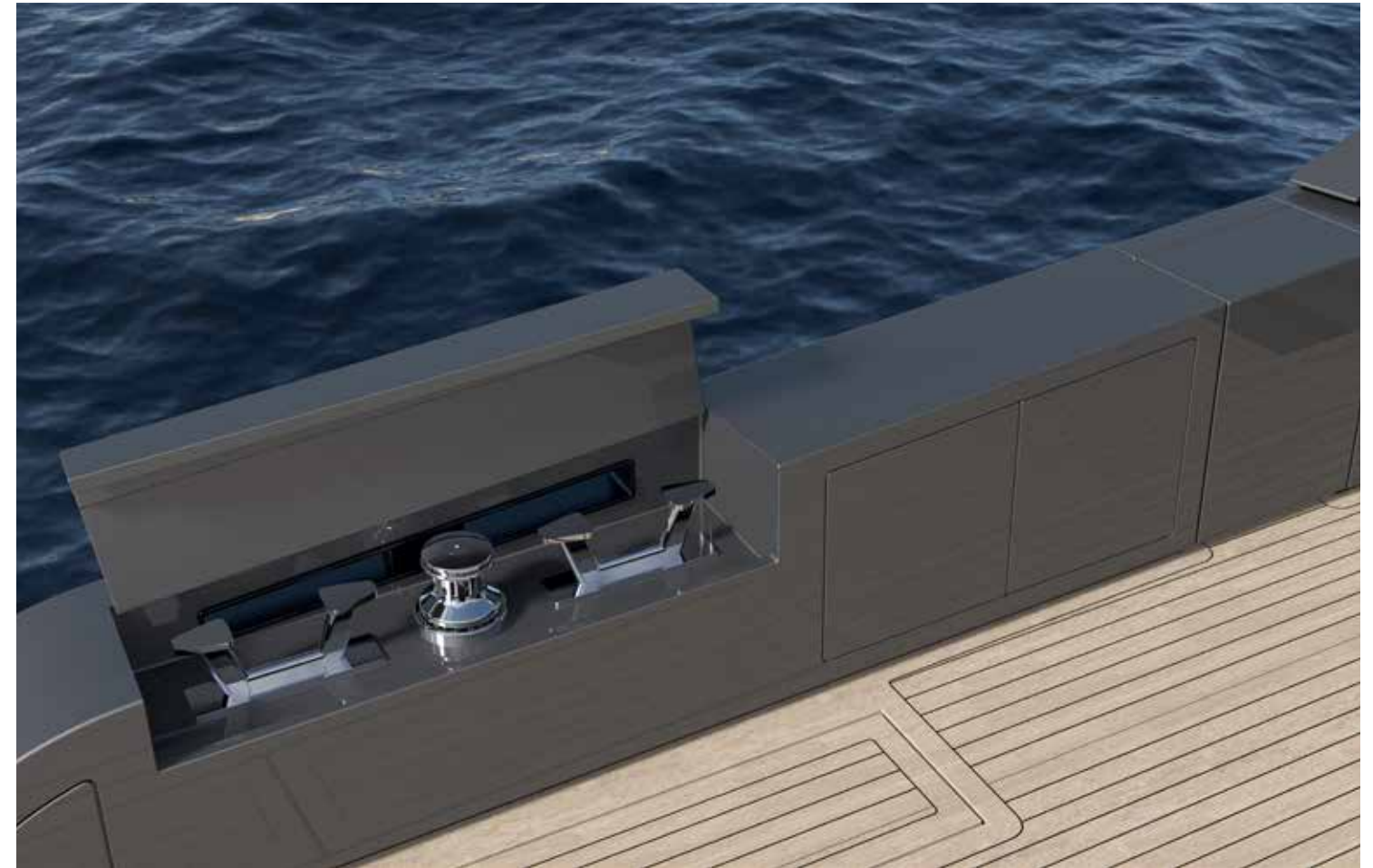
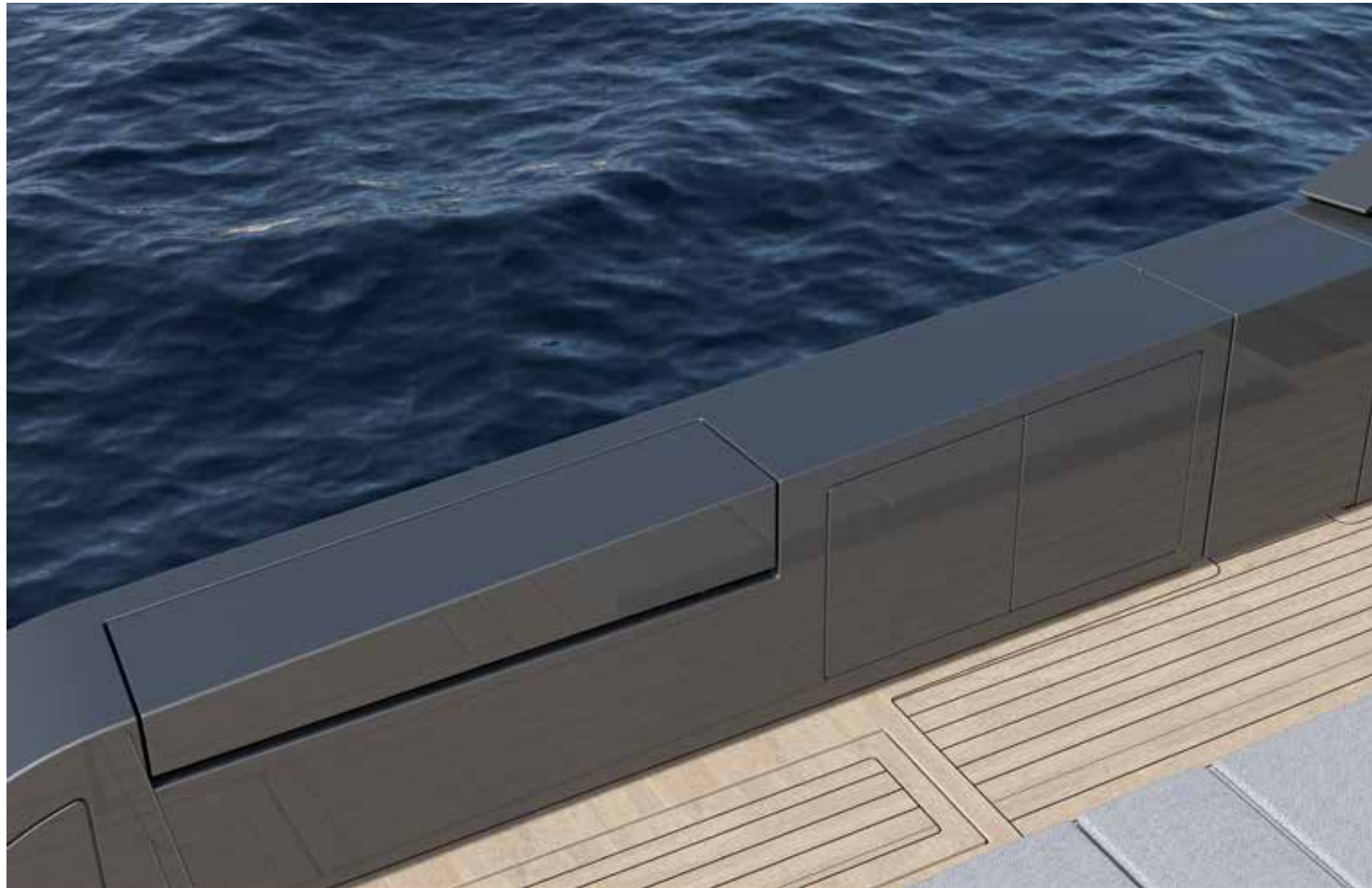
SP
110/



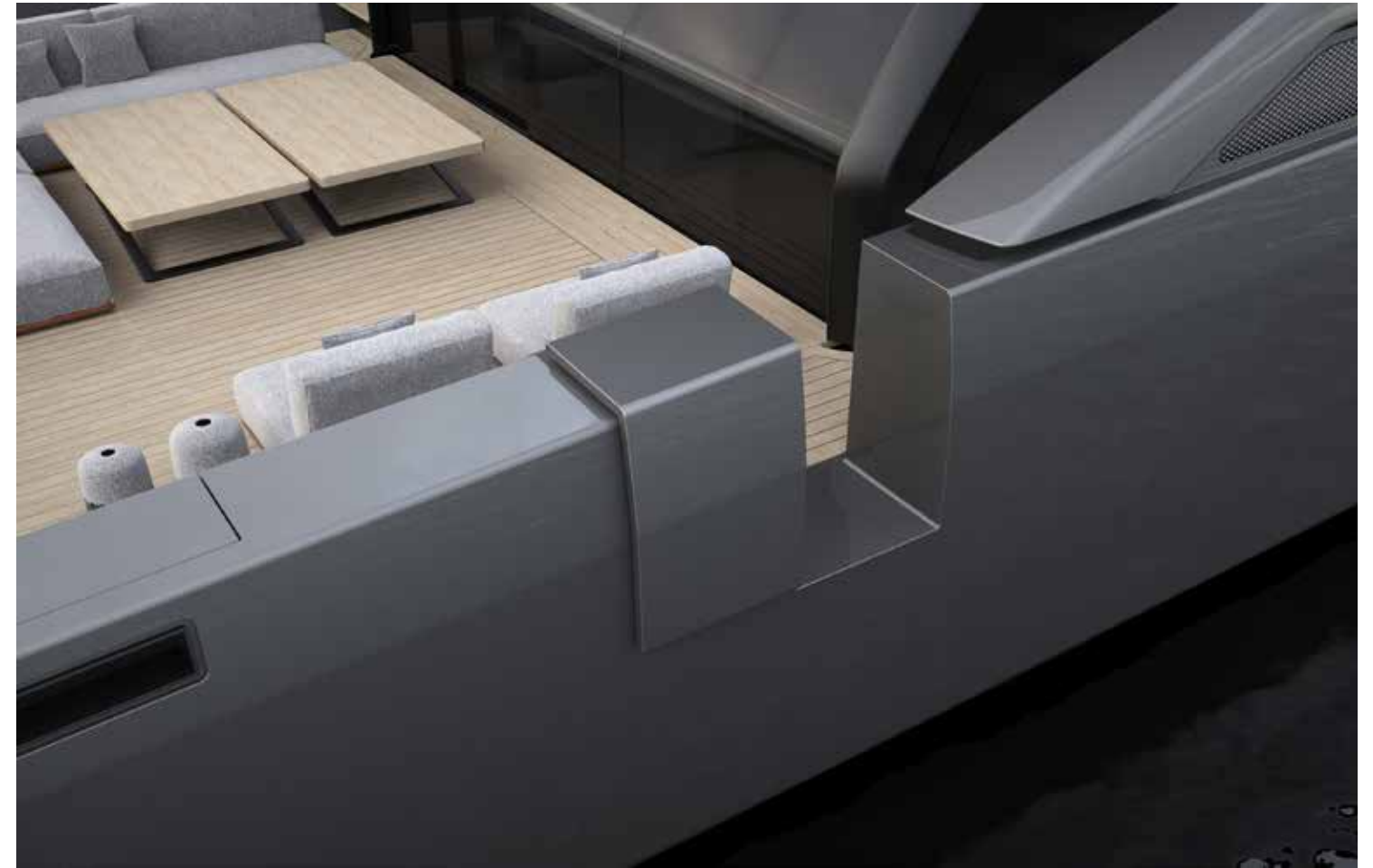
SP
110/



SP
110/



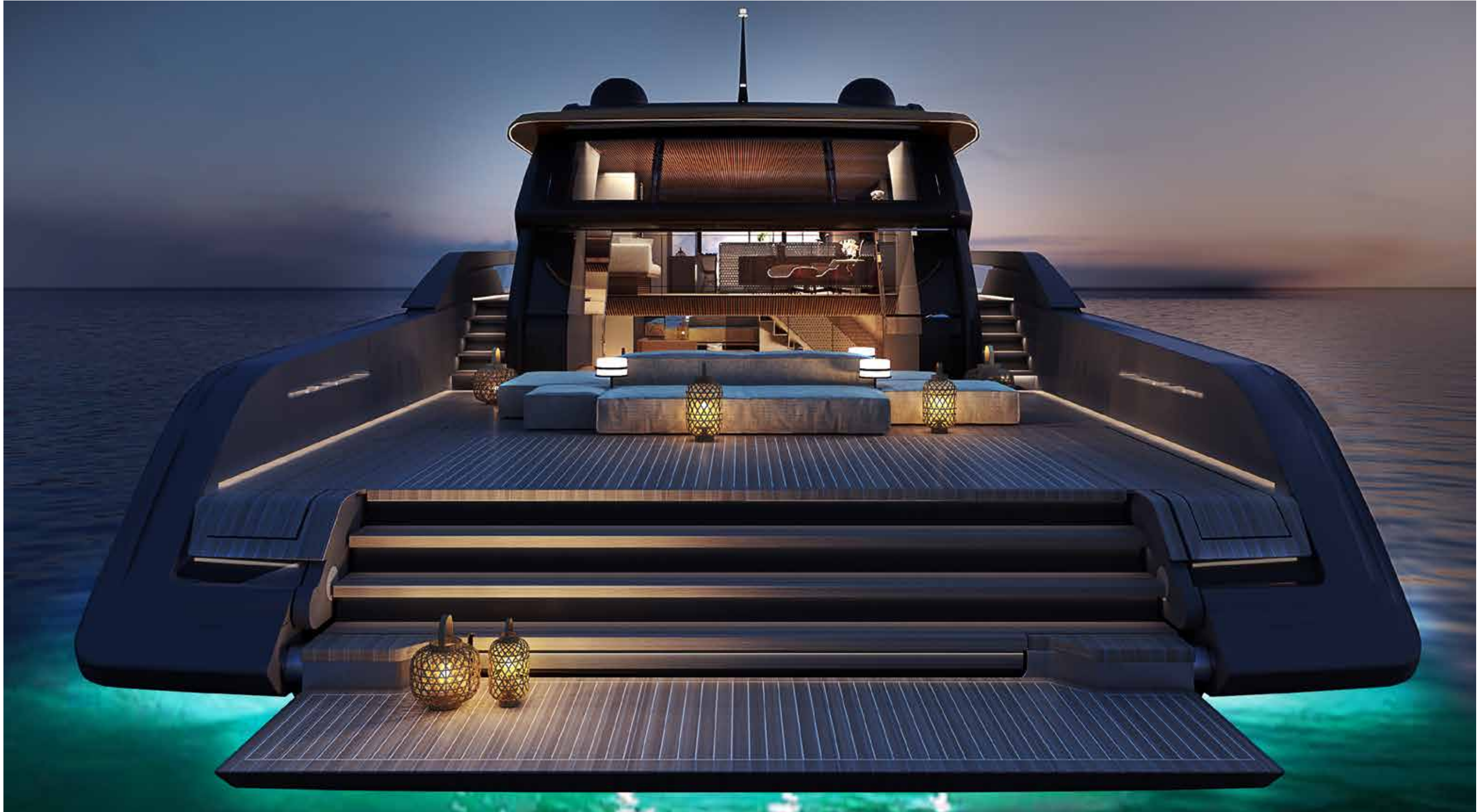
SP
110/



SP
110/



SP
110/



SP
110/



SP
110/



SP
110/



SP
110/















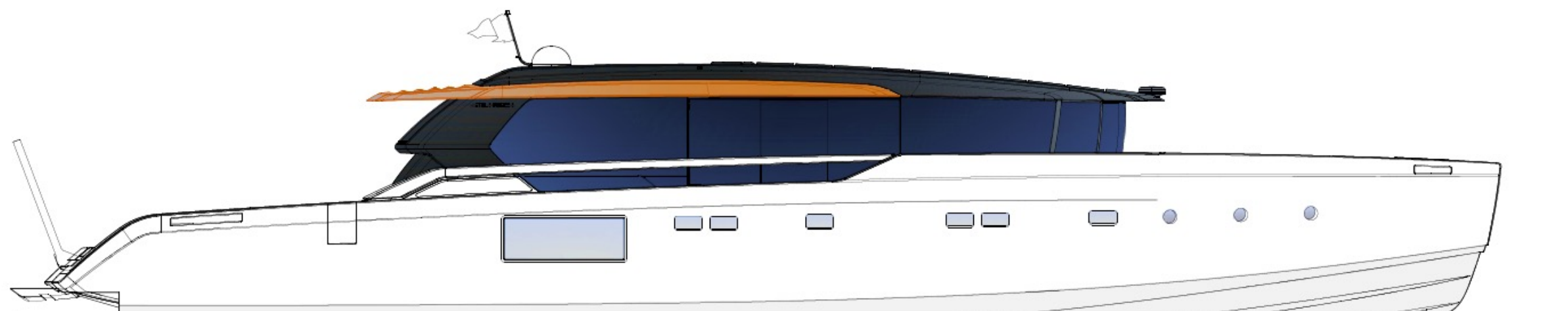
SP
110/



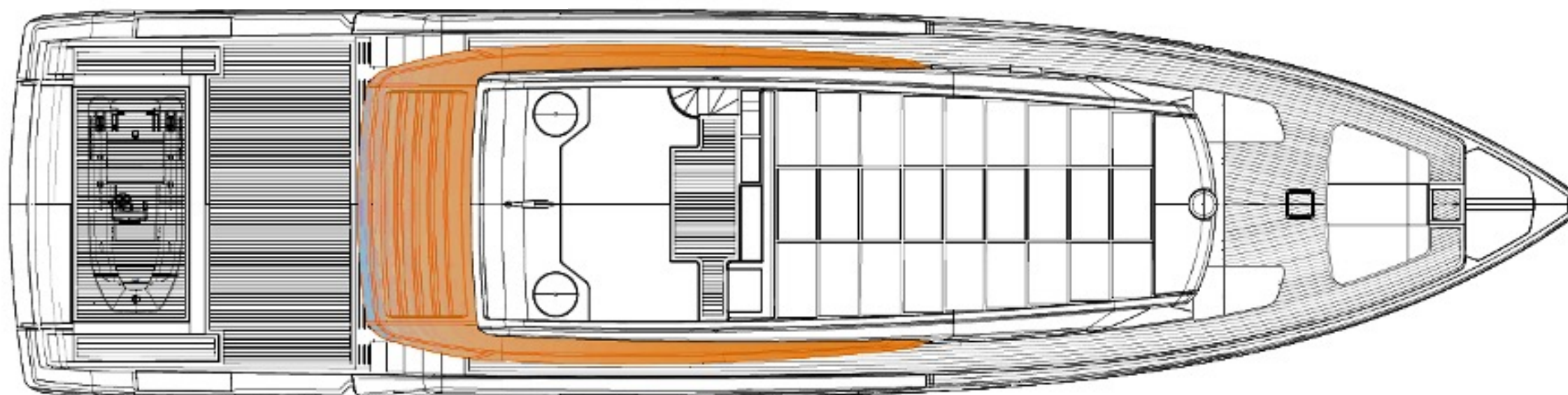
SP
110/



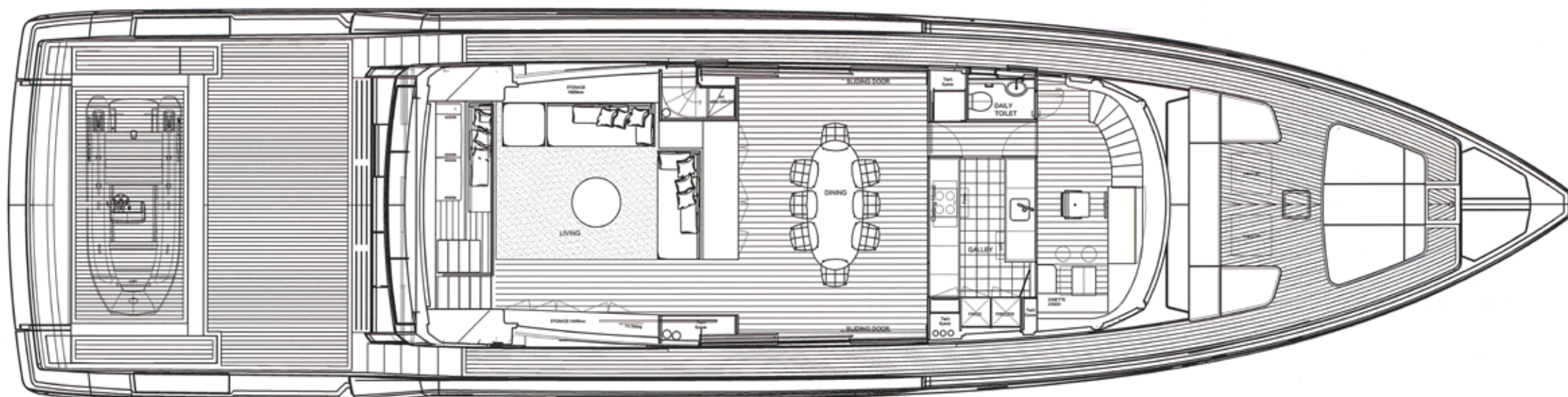
Profile



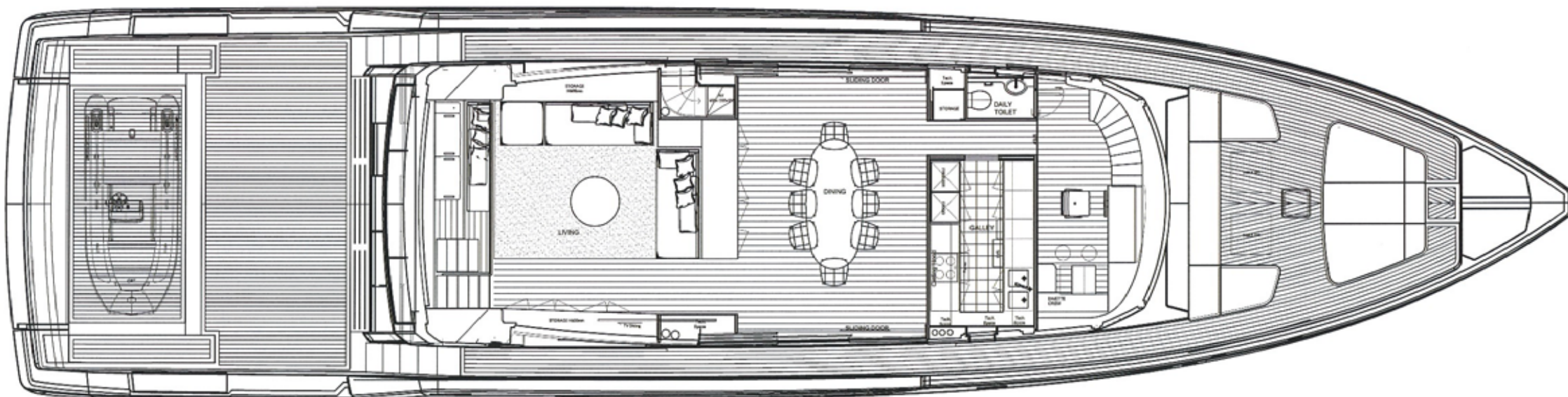
Flying bridge



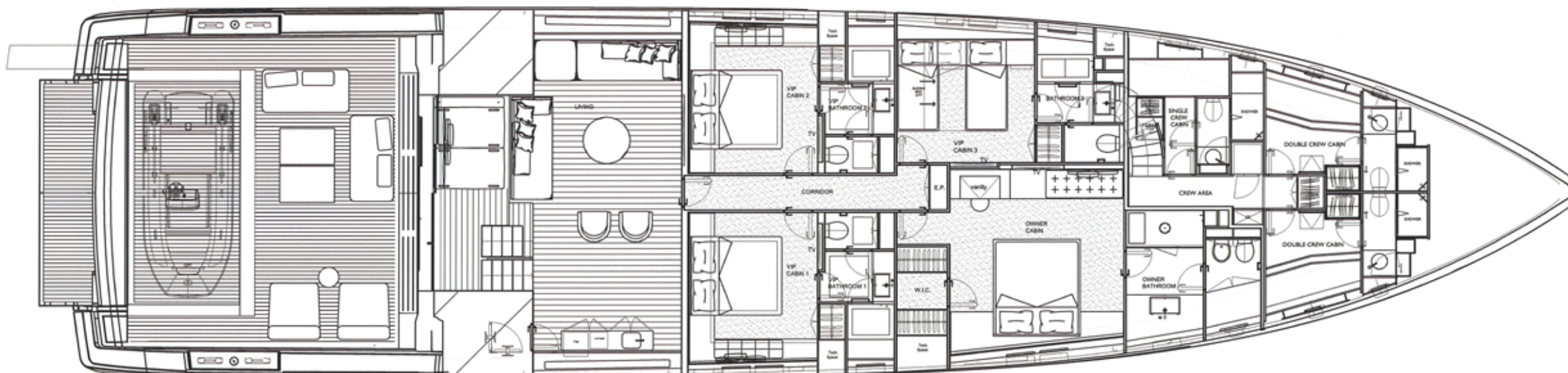
Open view galley - STD



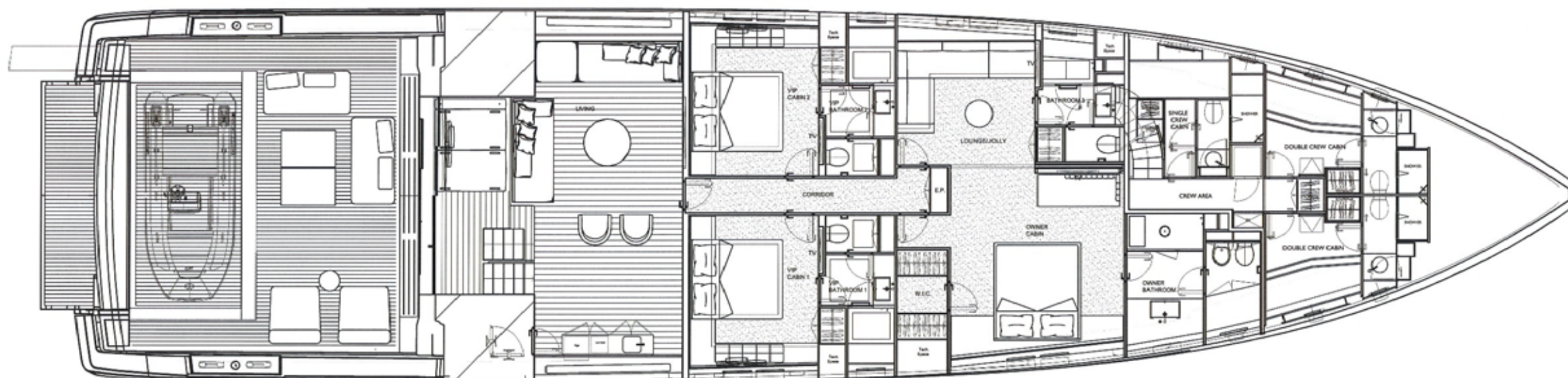
Closed galley - OPT



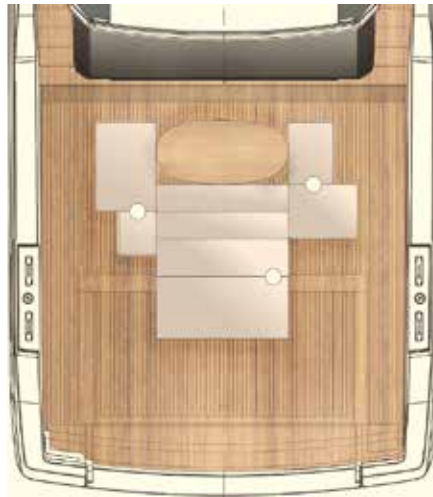
Four cabin layout - STD



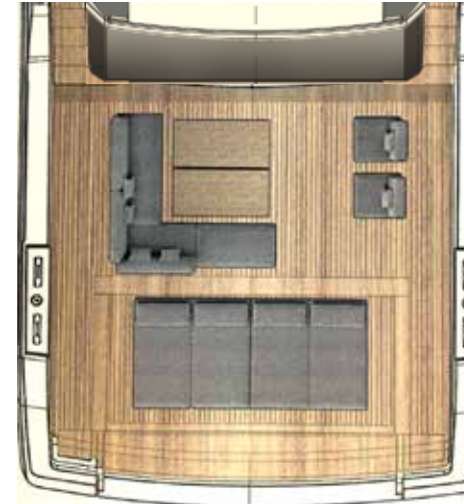
Three cabin + jolly cabin layout - OPT

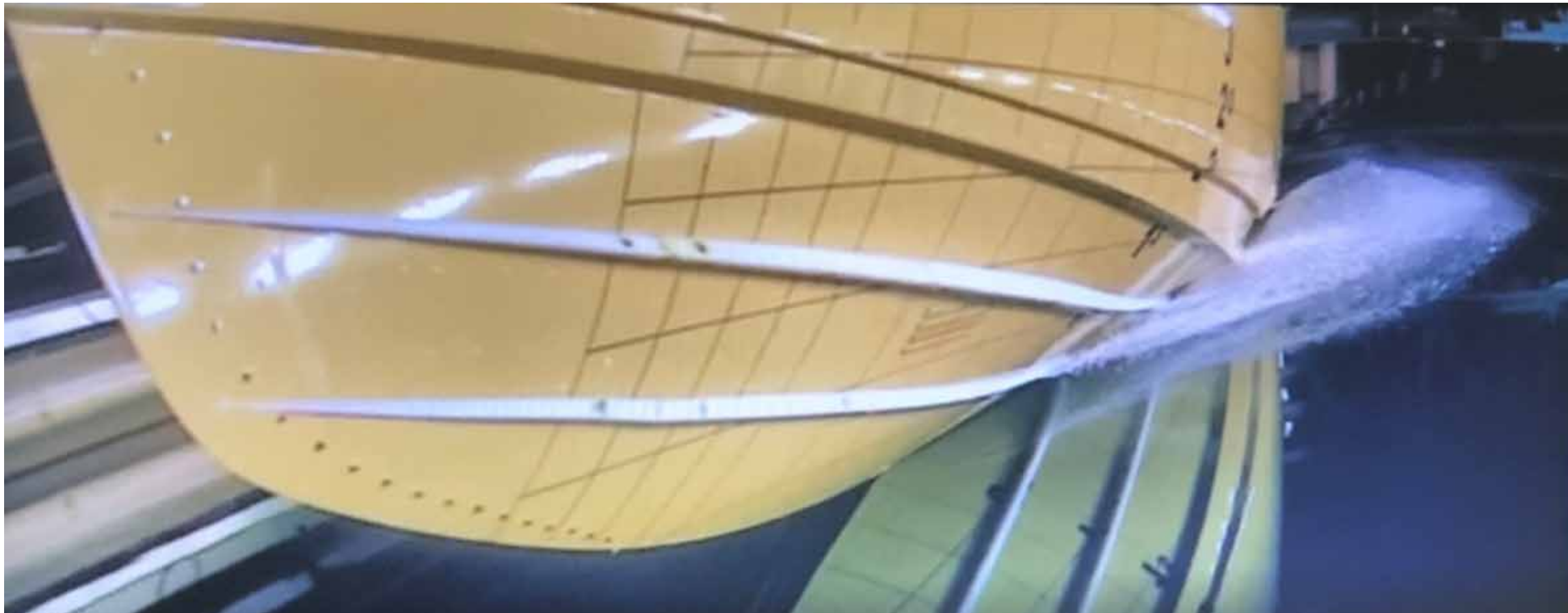


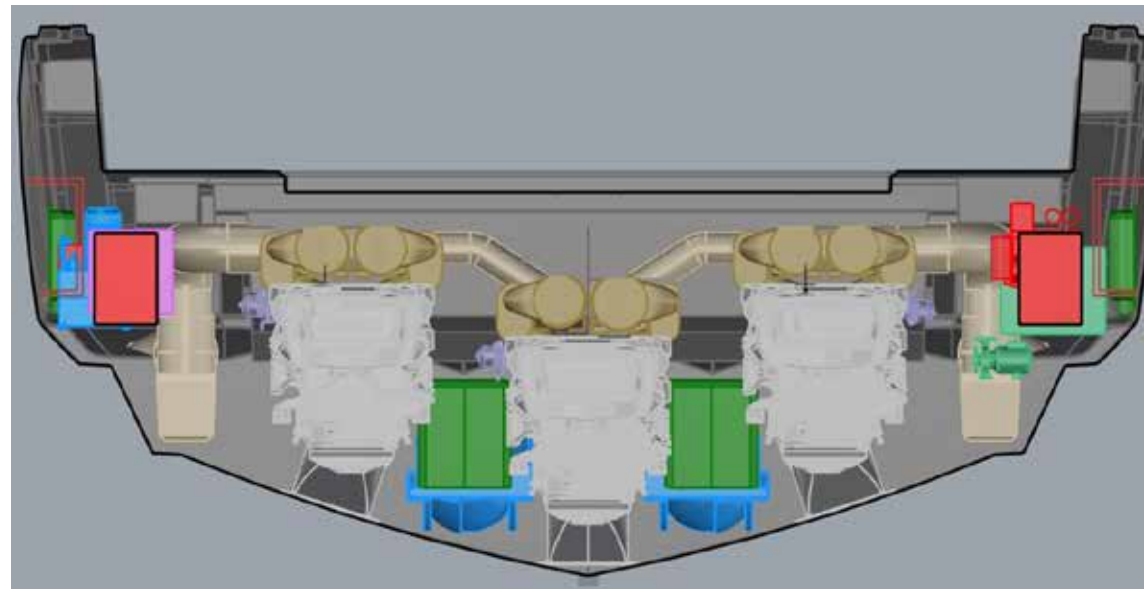
Solution A



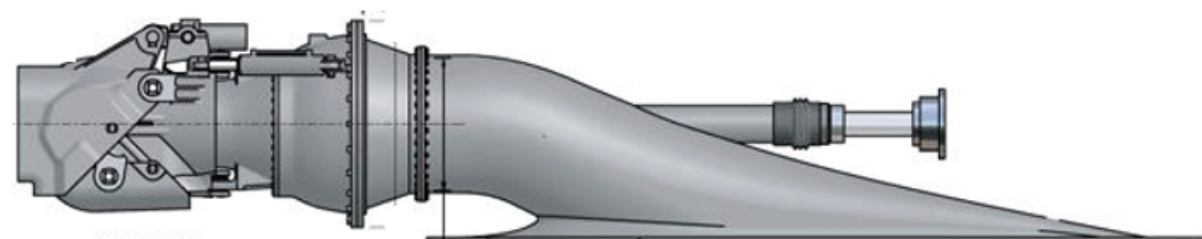
Solution B







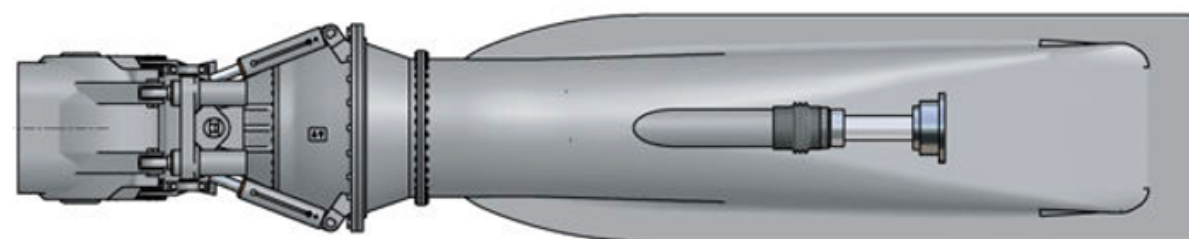
SP
110/



MJP

A FORCE TO TRUST

CSU series 550

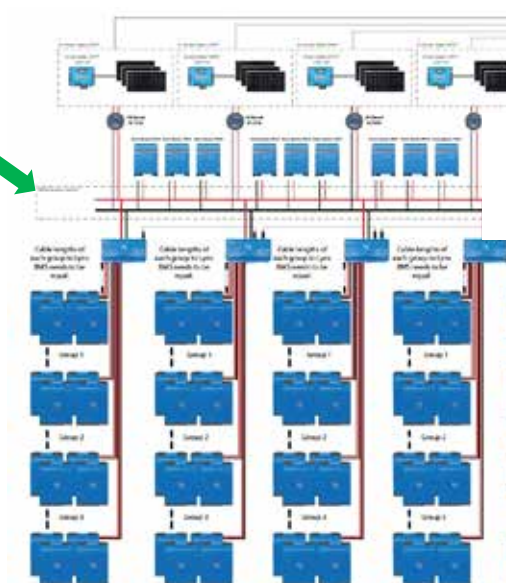


SMART PERFORMANCE

MONOCRISTALLINE
SOLAR PANELS



BATTERY BANK



IN THE MEDITERRANEAN WATERS, IN A SUMMER DAY, ABOUT 62 KW WILL BE PRODUCED TO RUN THE HOTEL LOADS (AVERAGE 15 KW/H) FOR MORE THAN 4 HOURS **FOR FREE, EVERYDAY**

Hull length	33,04 m
Length overall with open swim platform	33,84 m
Maximum beam	8,20 m
Displacement @ half load (*)	102 t +/- 3%
Waterline length @ half load	29,77 m
Draught @ full load	1,35 m
Engine	3 x MAN LE496 V 12 – 2000 HP (OPT 3 x MAN V12 – 2200 HP)
Propulsion	3 x water jet MJP 550 (Central Booster)
Gensets	1 x 28 kW + 1 x 35 kW Kohler
Bow thruster	Electric-hydraulic
Lithium battery package	2 x 60 kWa lithium battery pack (OPT)
Maximum speed (approx.) (**)	40 kn +/-5% (43 kn +/-5% MAN 2200 HP)
Cruising speed (approx.) (**)	36 kn +/-5% (39 +/-5% MAN 2200 HP)
Range @ cruise speed (approx.)	470 nm (410 nm 2200 HP)
Fuel capacity	12000 l
Fresh water capacity	1500 l
Black water capacity	400 l
Grey water capacity	600 l

* Displacement data refers to a yacht with standard layout as described in the sales specification
** Speed data refer to a yacht with standard layout as described in the sales specification, considering calm sea and no wind, and a third of liquid weight, a third of luggage weight (25kg per bed) and 5 crew members (80kg each).

It's not an investment if it's destroying the planet

											
INFUSION LAYUP SYSTEM	BIO RESIN &CORE	FSC CER TIFIED WOOD SUPPLY	FORMALDEHYD E FREE FURNITURE	LED LIGHTING	BIOCHROME®	SUSTAINABLE LEATHER	CLASS A++	SOLAR PANELS	HULL EFFICIENCY	THERMAL INSULATION	PROPULSION EFFICIENCY

This brochure shall not be regarded as a contractual offer regarding the sale of yachts from the shipyard to individuals or companies. All the information contained in this brochure, including without limitation any technical or performance data, pictures, and drawings, are mere indications with no contractual value.

This document is based on the information available at the time it is published. In spite of the commitment aimed at guaranteeing maximum possible accuracy, the information contained herein may not cover all the details and any technical-commercial modifications introduced after printing, or may describe features that are not present.