

SUPERYACHT

SANLORENZO

50
STE
EL/

50
STEEL/



50
STEEL/
EL/



50
STEEL/



50
STEEL/
EL/



50
STEEL/
EL/



50
STEEL/
EL/



50
STEEL/



50
STEEL/
EL/





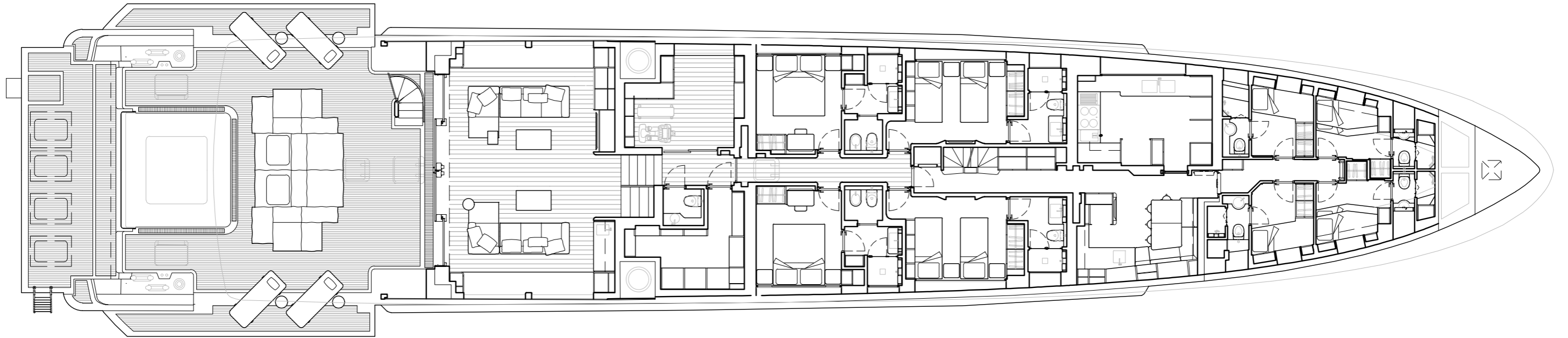
50
STEEL/
EL/



50
STEEL/
EL/



step on
board





14. Three levels section



15. Ocean lounge



16. Lower deck - gym



17. Lower deck - hammam



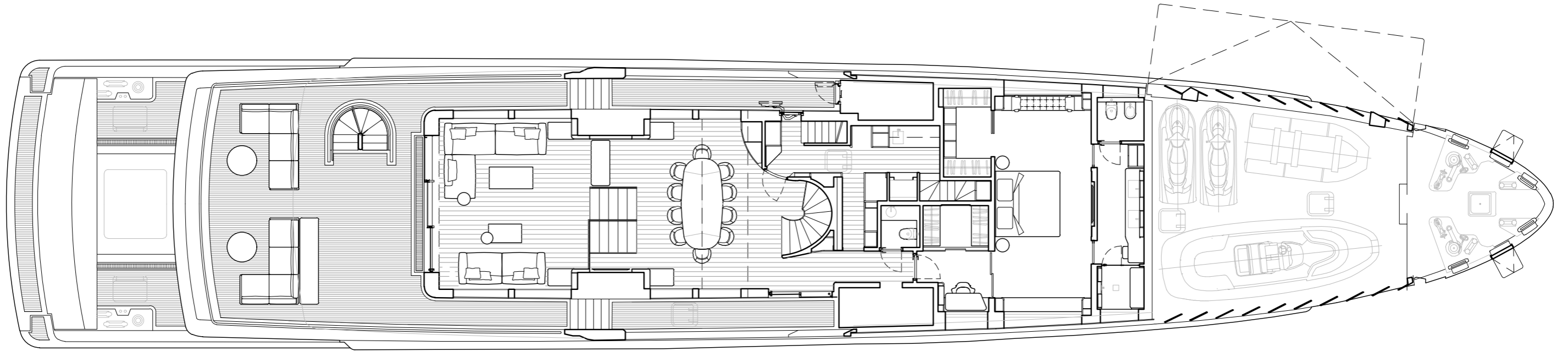
18. Lower deck - VIP cabin



19. Lower deck - VIP cabin



20. Lower deck - VIP bathroom







23. Mezzanine - dining area



24. Raised main deck - salon

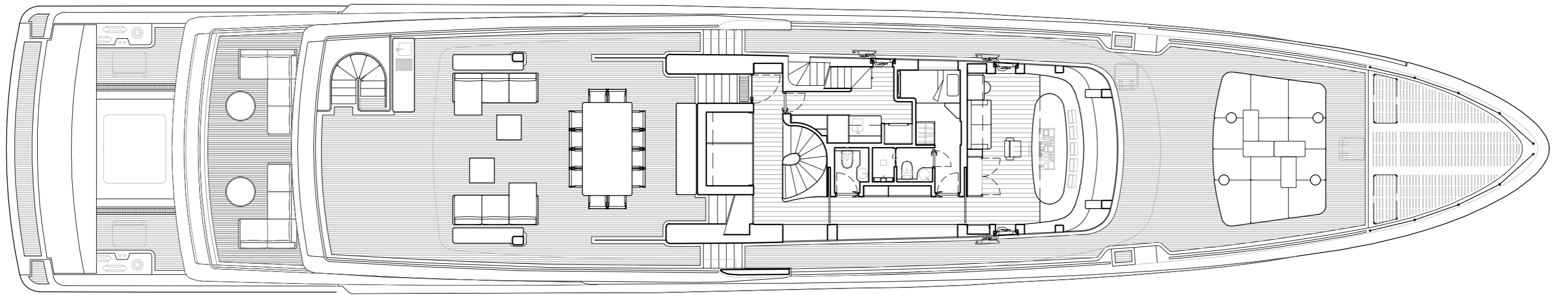


25. Main deck - owner's cabin



26. Main deck - owner's dressing

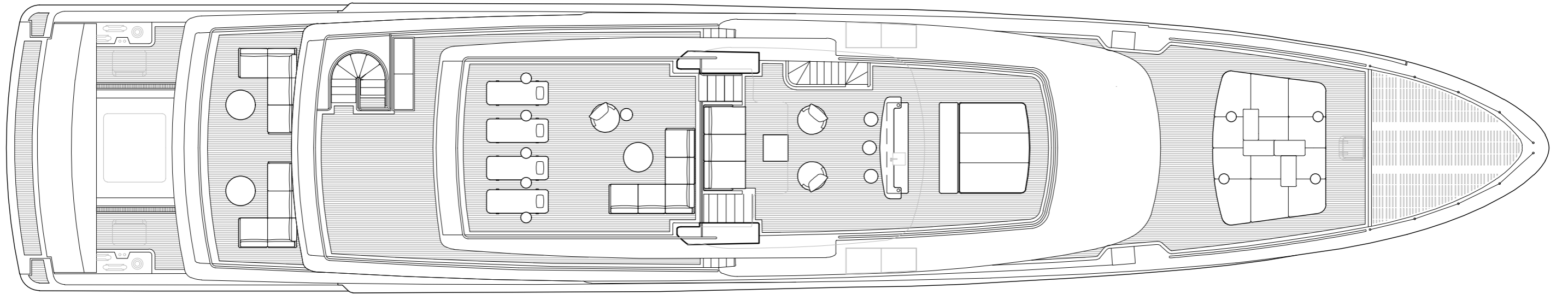








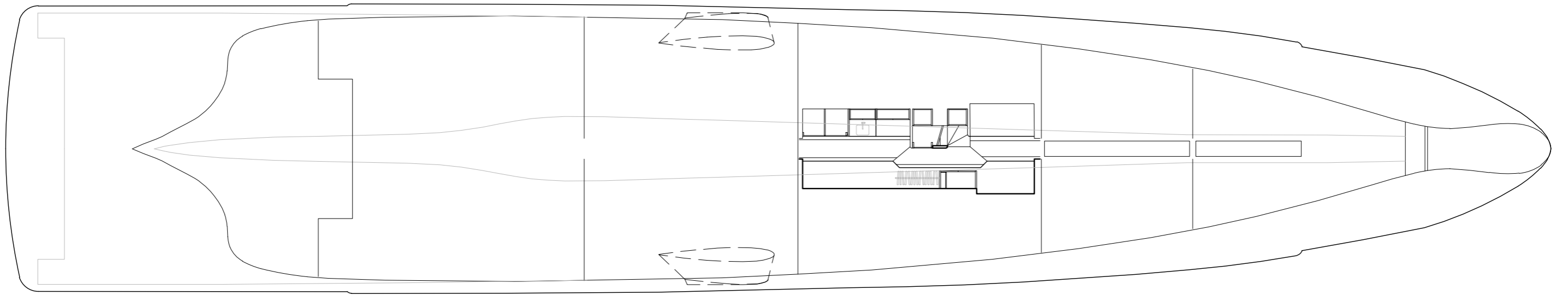
30. Upper deck – al fresco veranda







33. Upper deck - wheelhouse



Length Overall	49.99 m
Maximum Beam	9.40 m
Depth, amidships	4.90 m
Gross Tonnage	499 GT
Hull	Steel
Superstructure	Aluminium
Guests accommodation	10 people
Crew accommodation	9 people
Engines	2 x MAN D2862-LE489
Maximum Speed (approx) (*)	16 knots
Comfort Speed (approx) (*)	12.5 knots
Tender length	6.3 m
Max range @ 11 kn (approx)	4,000 nm
Fuel capacity	55,000 l
Main tender	Up to 7m

*Technical data refer to a yacht with standard layout as described in the sales specification

This brochure shall not be regarded as a contractual offer regarding the sale of yachts from the shipyard to individuals or companies. All the information contained in this brochure, including without limitation any technical or performance data, pictures, and drawings, are mere indications with no contractual value.

This document is based on the information available at the time it is published. In spite of the commitment aimed at guaranteeing maximum possible accuracy, the information contained herein may not cover all the details and any technical-commercial modifications introduced after printing, or may describe features that are not present.