

SWAN 128

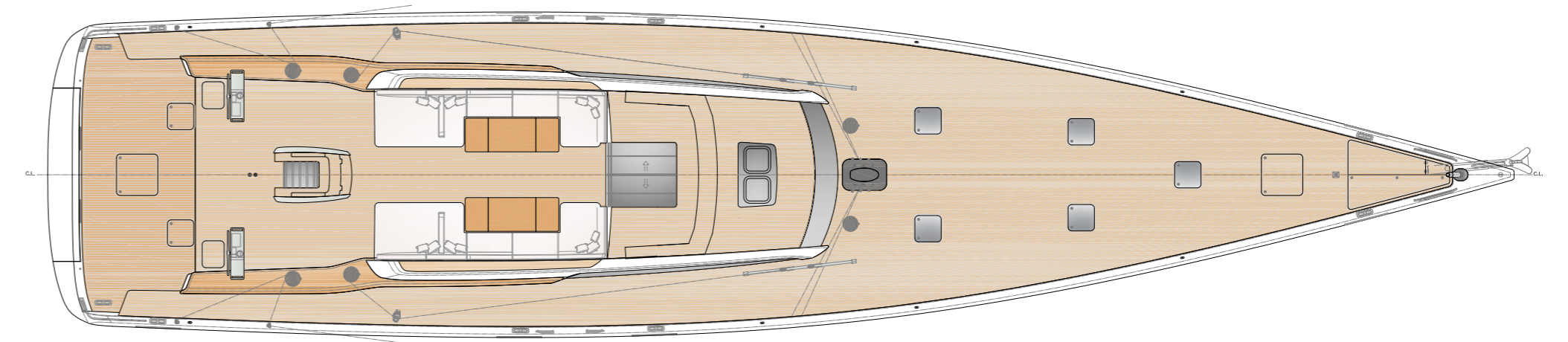
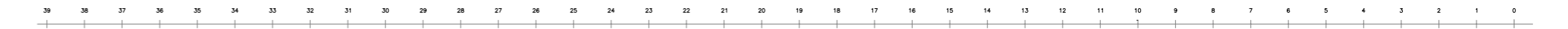
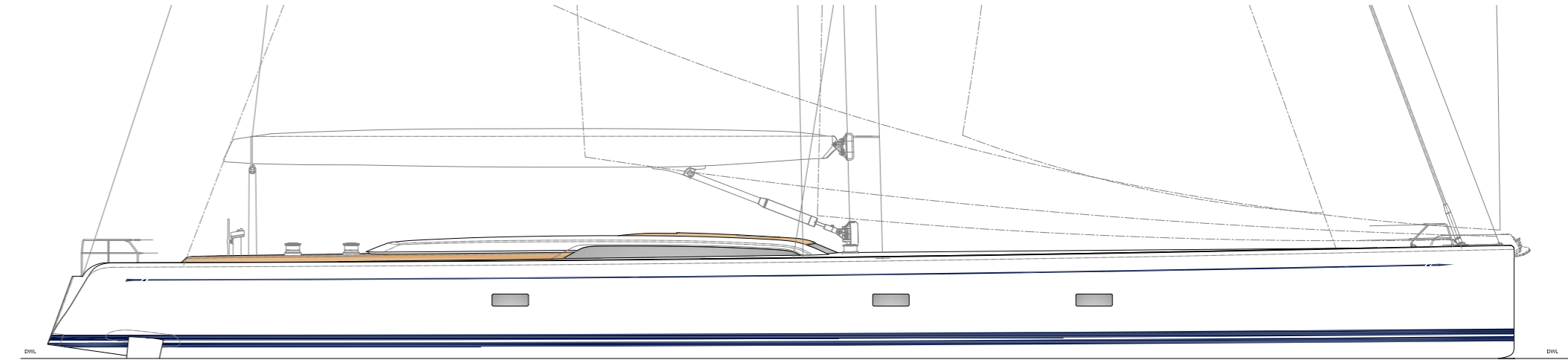




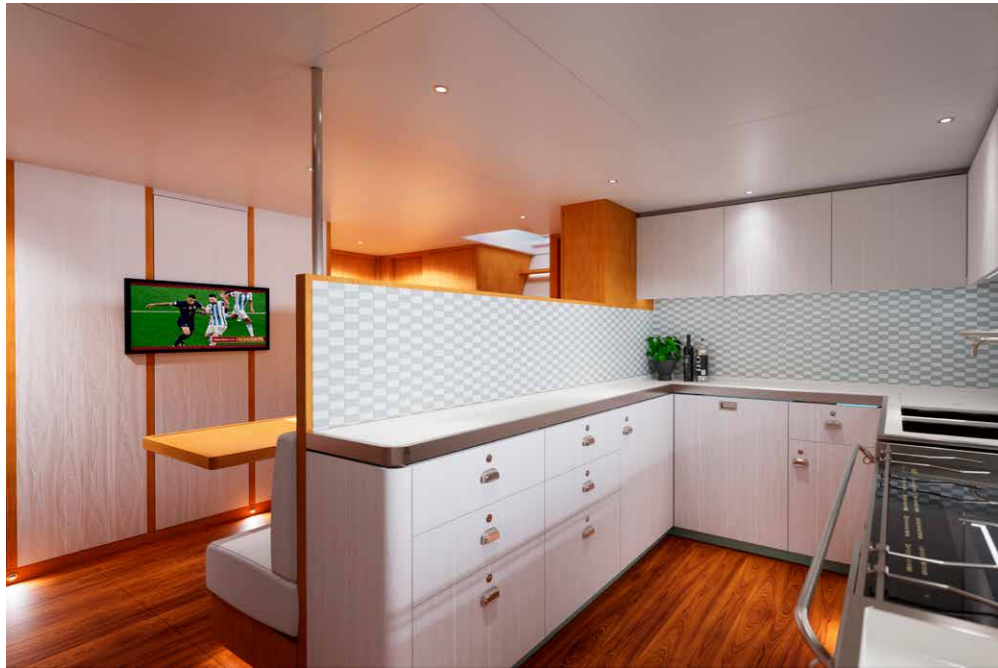


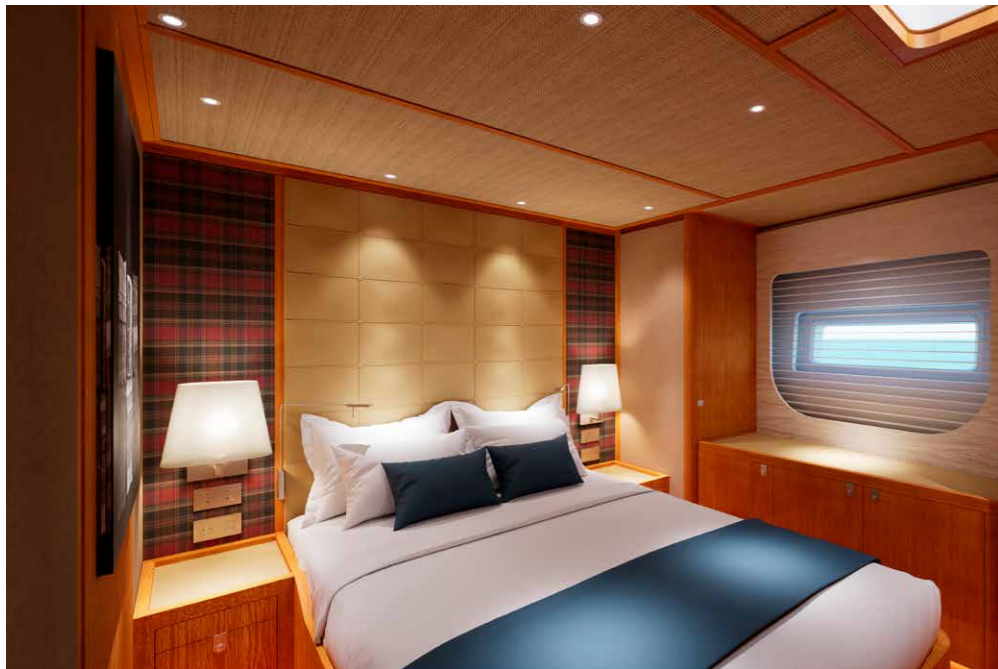




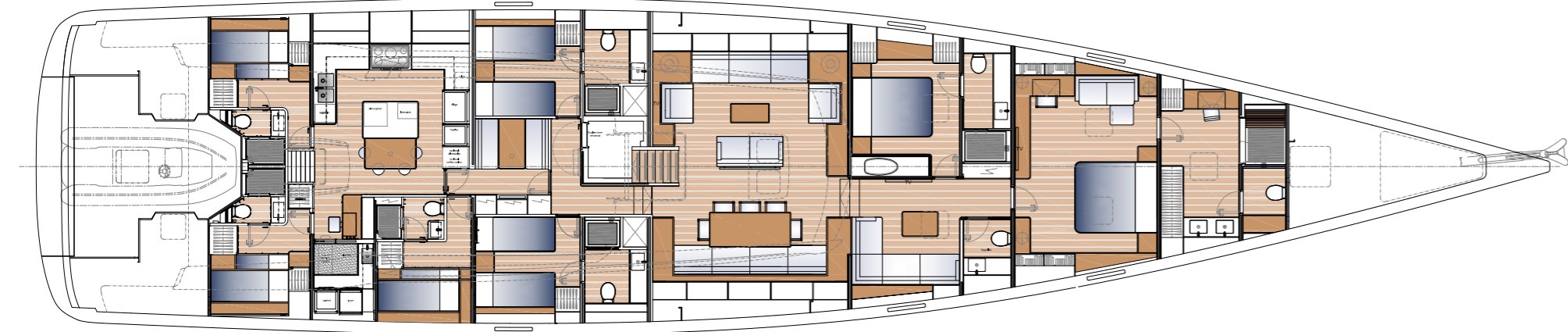
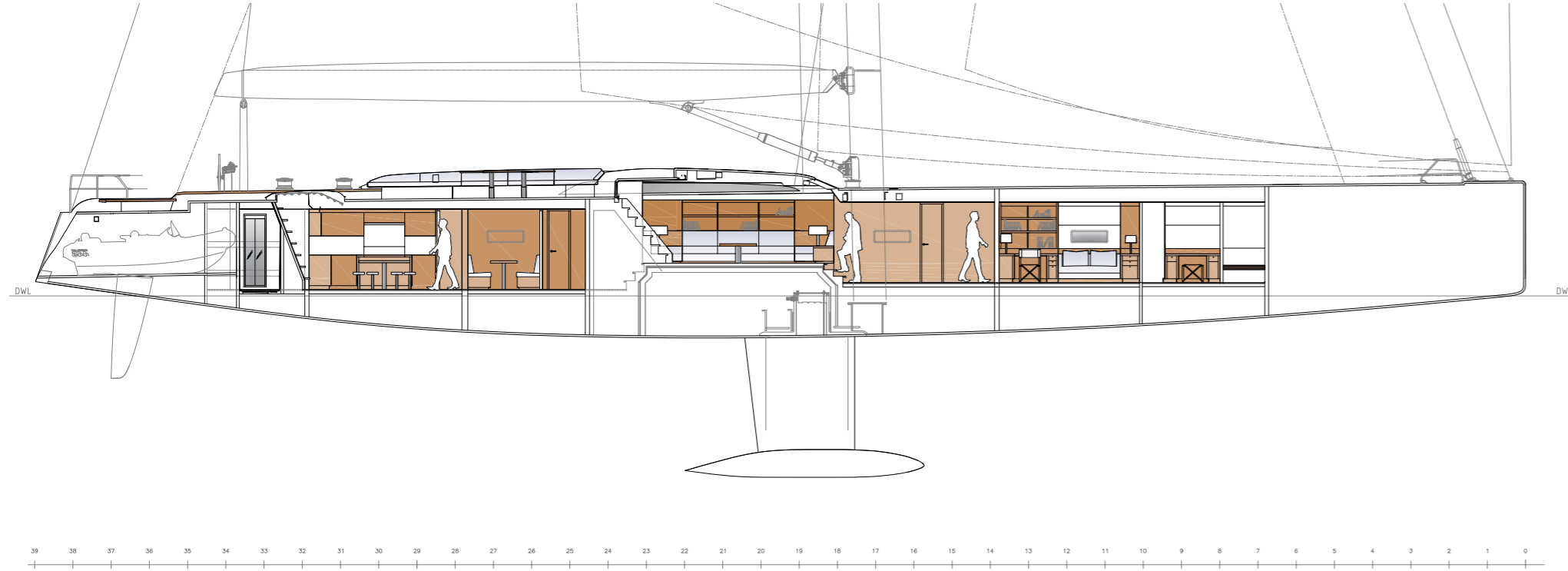




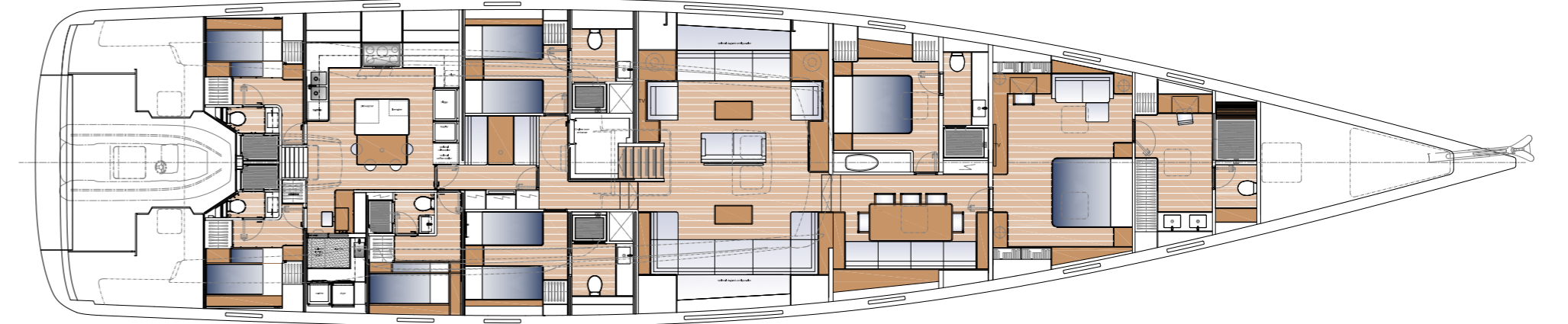
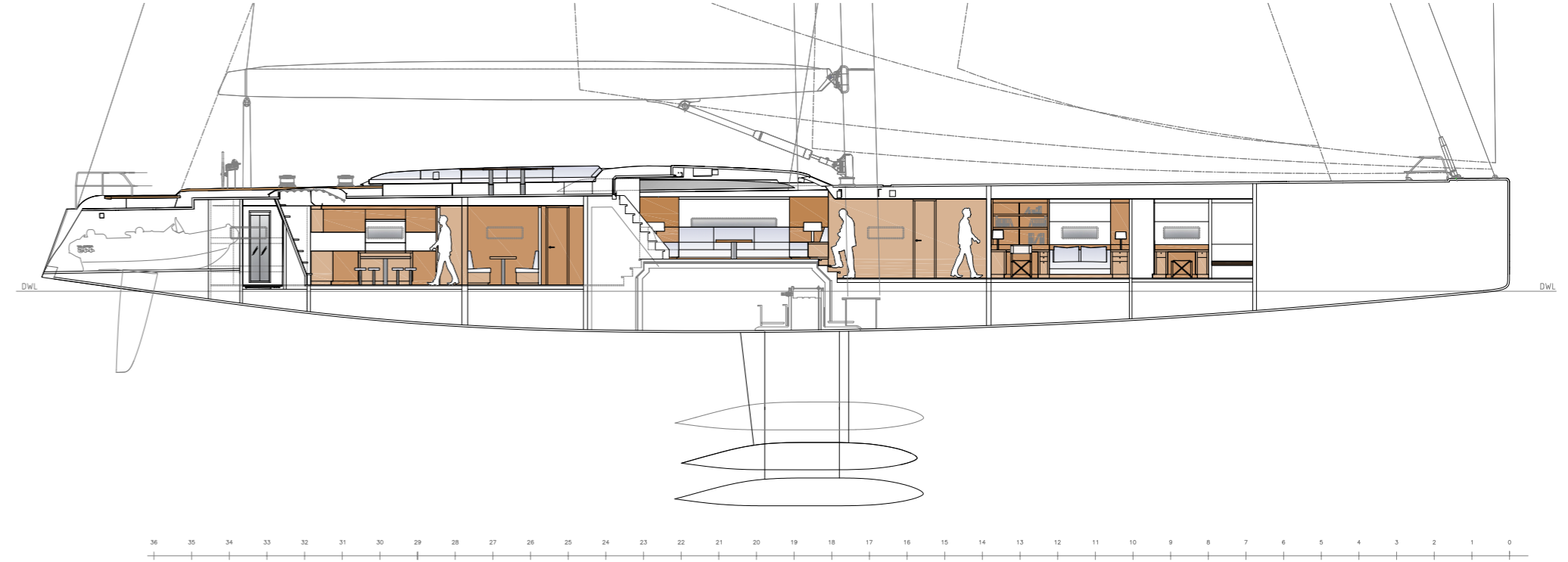




Standard



With options



Specification

General

Length of hull	38.98 m	127.89 ft
LWL	35.94 m	117.91 ft
Beam max	8.65 m	28.38 ft
Draught (standard keel)	4.70 m	15.42 ft
Draught (telescopic keel, optional)	5.70 m / 3.70 m	18.70 ft / 12.14 ft
Displacement (light) estimate	122.800 kg	270.700 lbs
Displacement (loaded) estimate	136.200 kg	300.200 lbs
Ballast estimate	39.500 kg	87.000 lbs
Main engine	405 kW	550 Hp
Estimated gross tonnage	188	

Rig and sail dimensions

IG	48.00 m	157.50 ft
J	15.37 m	50.40 ft
P	47.50 m	155.80 ft
E	15.80 m	51.80 ft
Fore triangle	368.90 m ²	3.970 sq.ft
Main sail (ORC)	443.80 m ²	4.777 sq.ft
Jib (ORC)	401.50 m ²	4.321 sq.ft
Asymmetric spinnaker	1118 m ²	12.700 sq.ft

Tank capacity

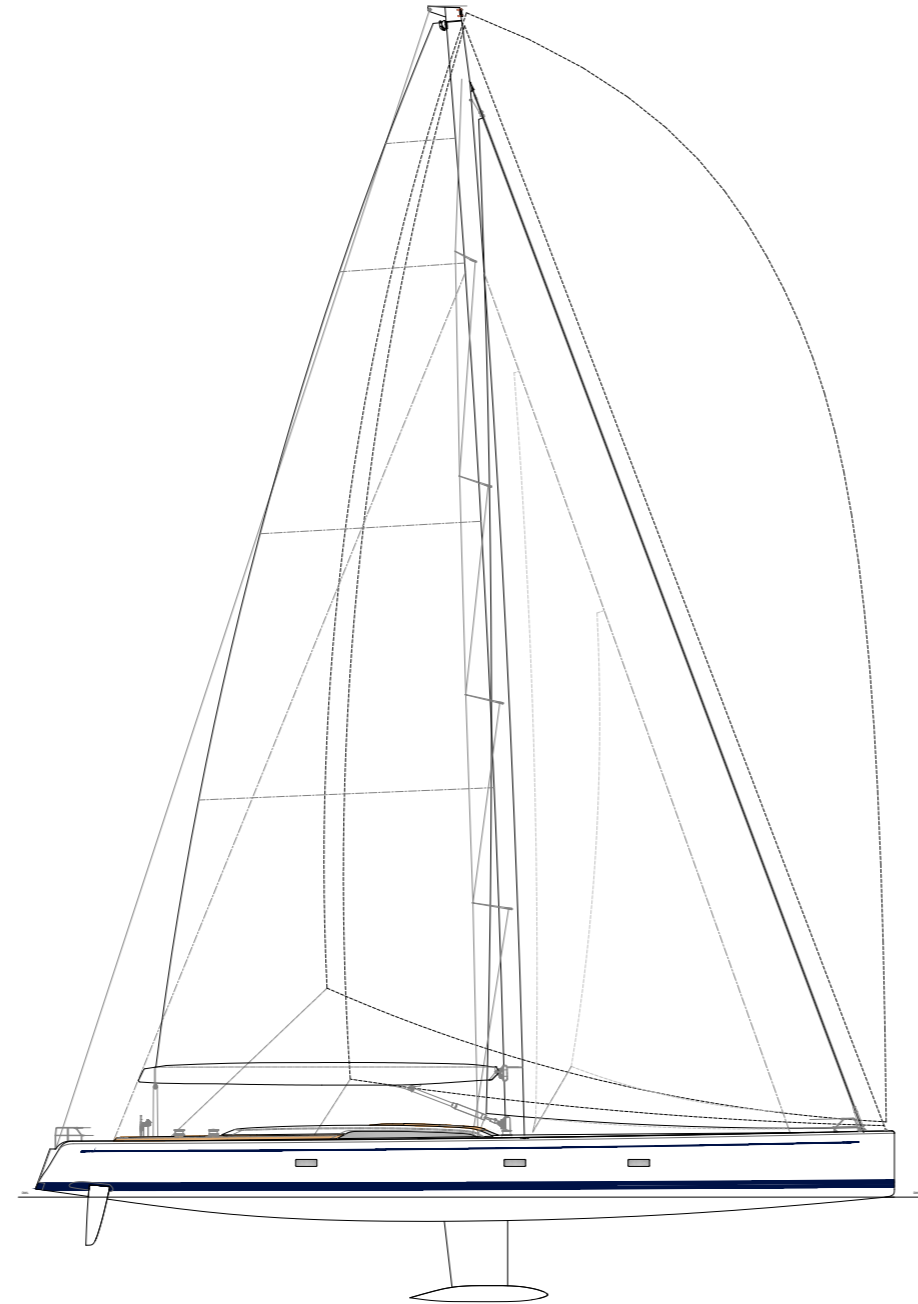
Fuel	5.500 l	1.452 USg
Water	2.650 l	700 USg

Plan Approval

RINA Plan Approval

Naval Architect

Frers Naval Architecture & Engineering



This catalogue contains non-contractual descriptive information about Nautor Swan yachts including drawings, photographs as well as other data. All such information is subject to change at any time without prior notice and does not represent an exact description of any particular yacht. Photos or diagrams could include special equipment that is not part of the equipment supplied by the boatyard. All the information, figures, photographs and data provided in this catalogue are exclusive copyright, industrial property right and property of Nautor Swan.

