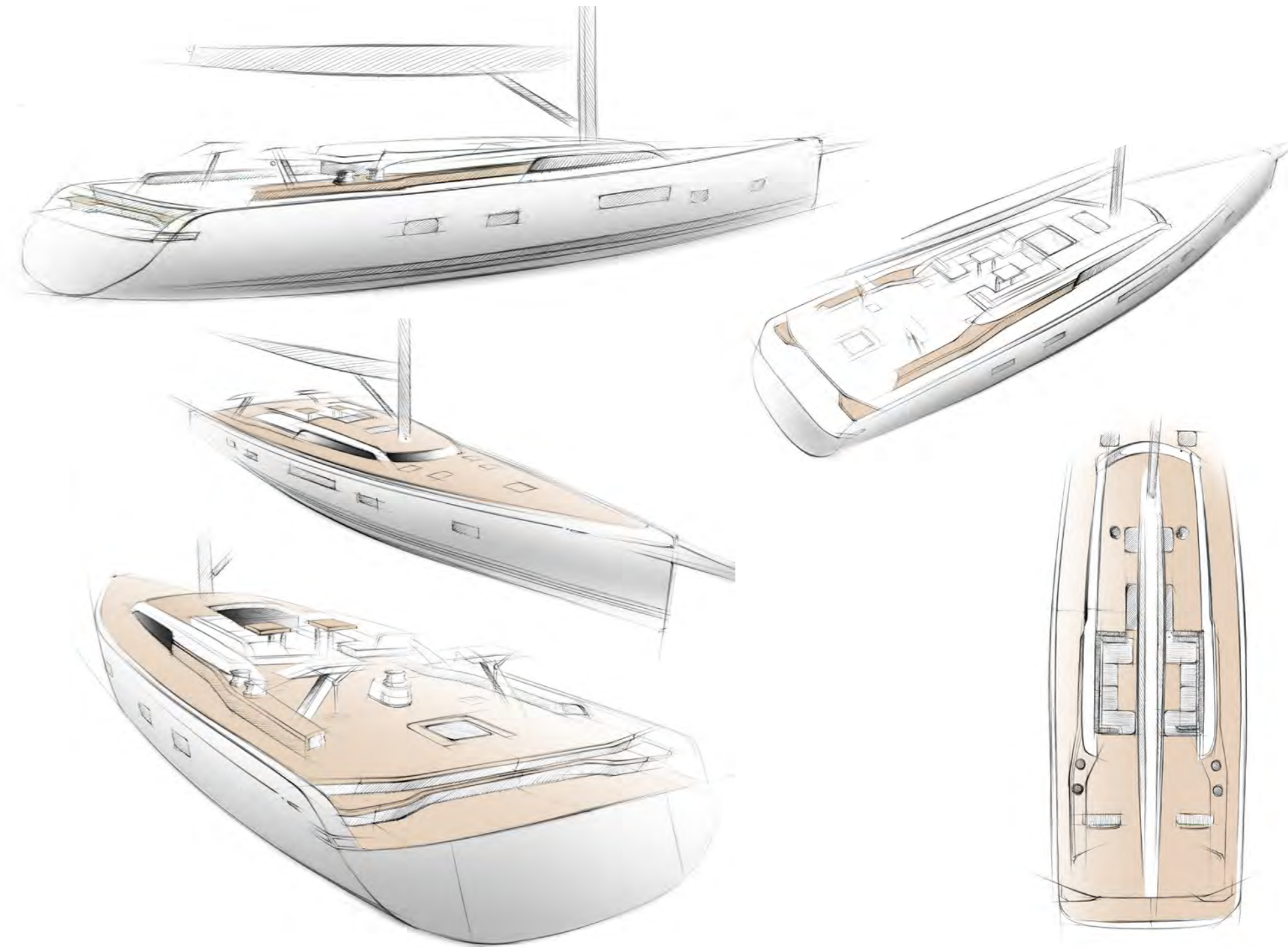


SWAN88

The logo consists of the text "SWAN88" in a bold, blue, sans-serif font. Below the text is a horizontal blue line that ends in a right-pointing arrowhead.





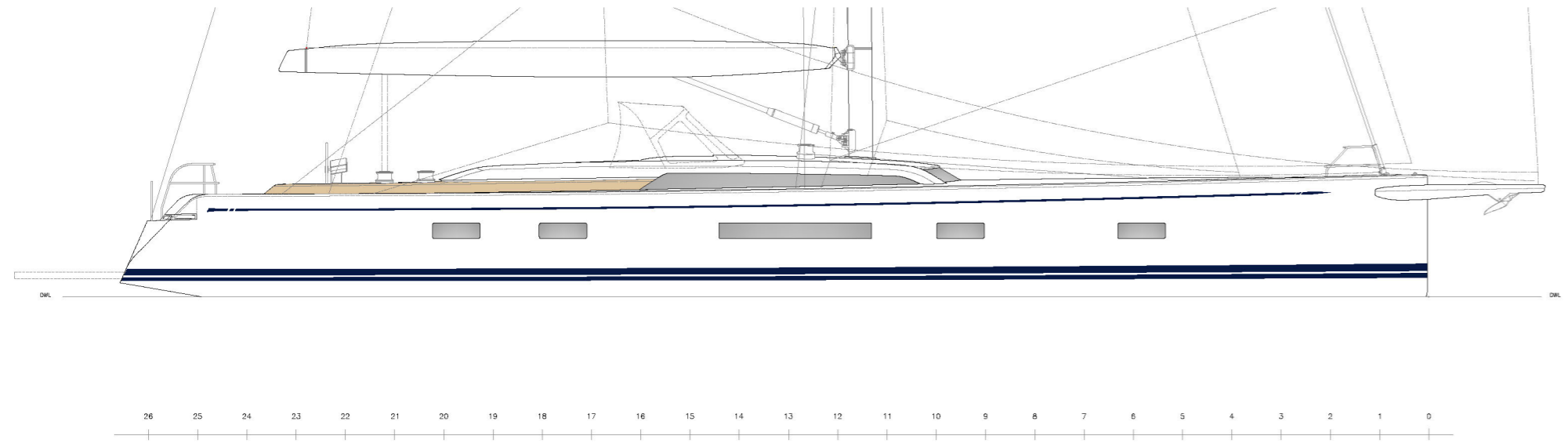




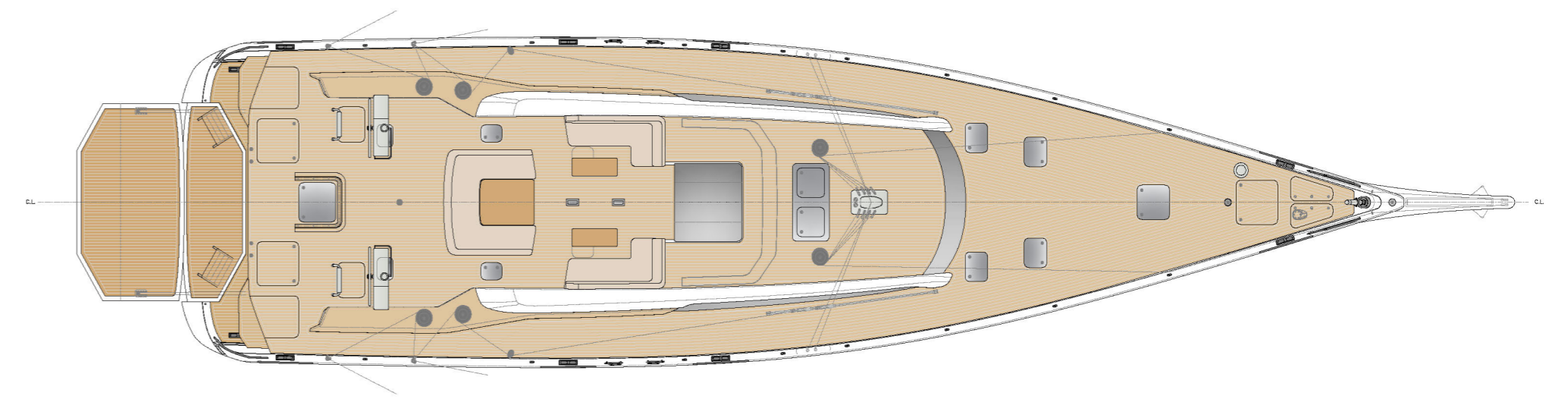
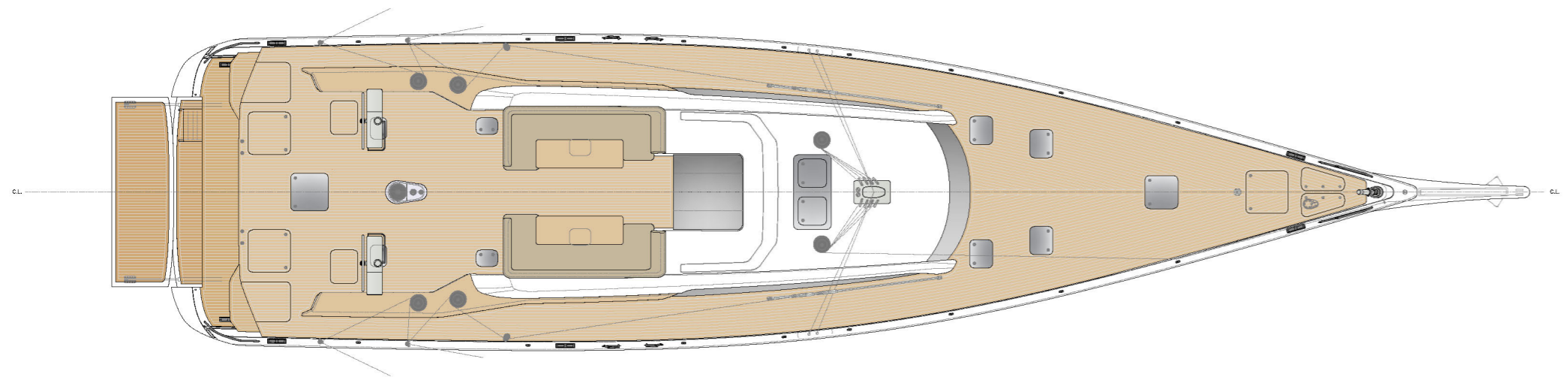
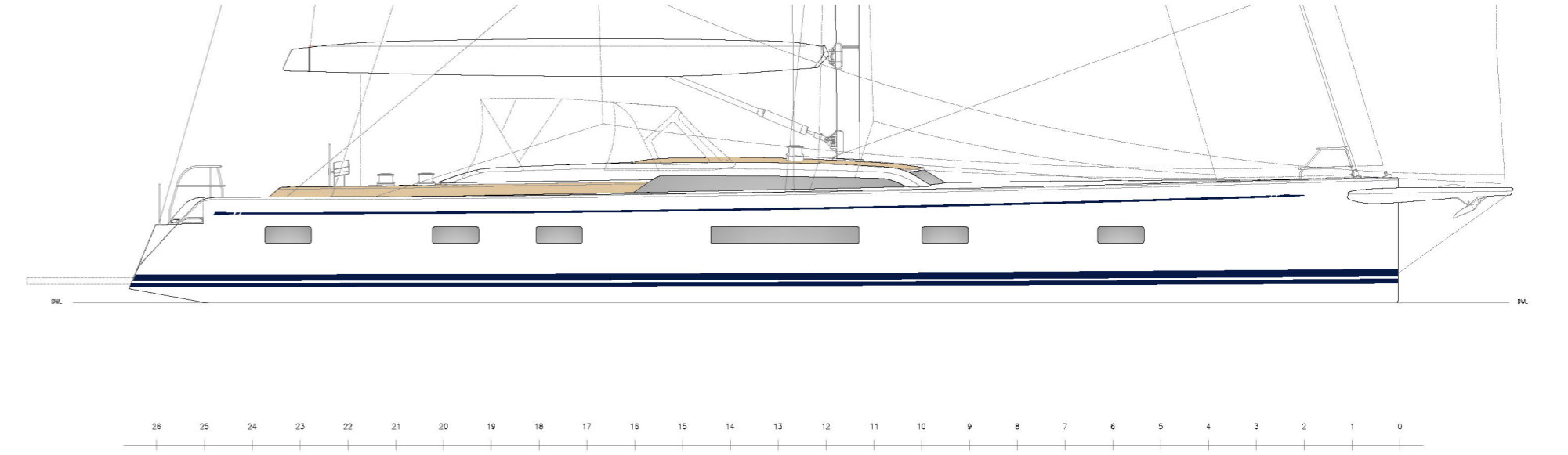




Standard



With options









Timeless White



Traditional Navy



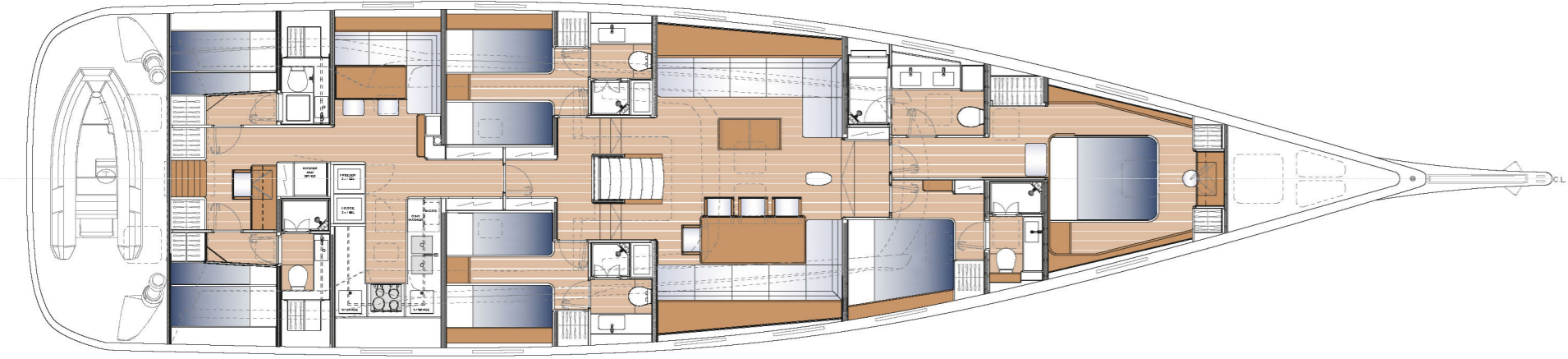
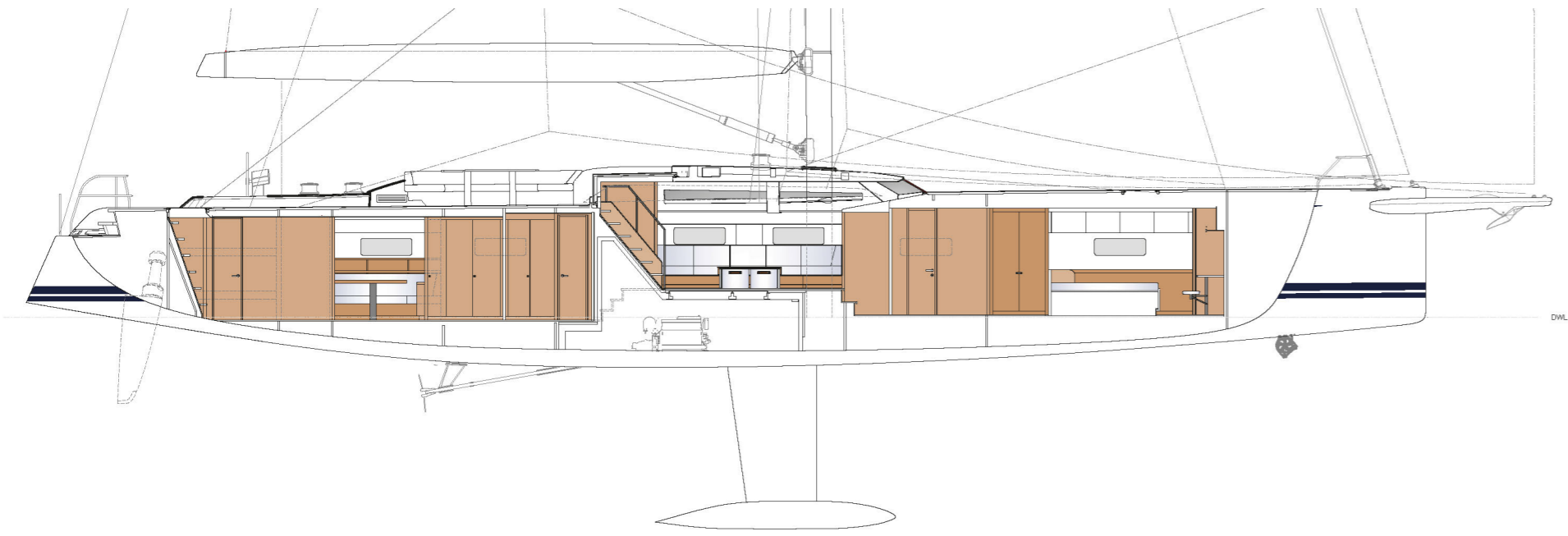
Spirit of Finland



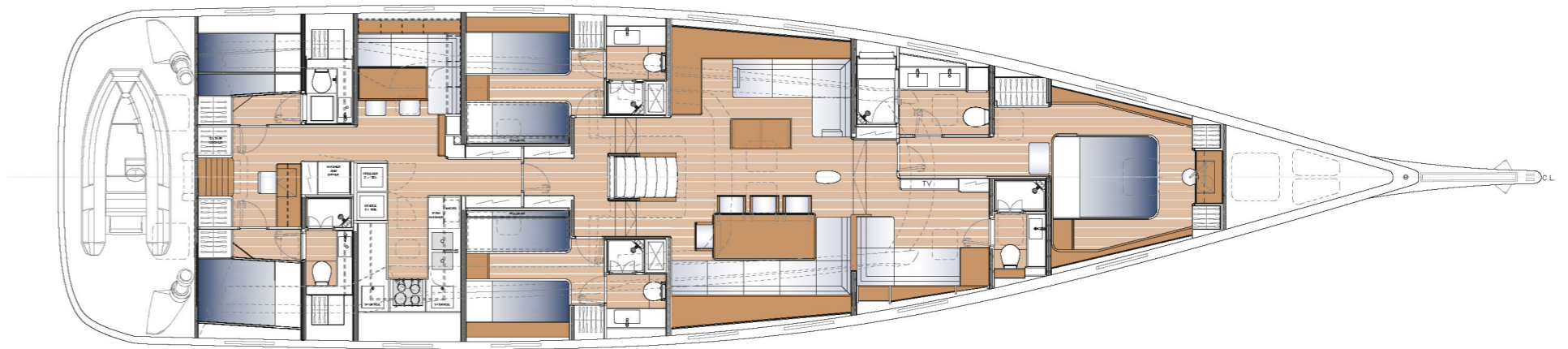
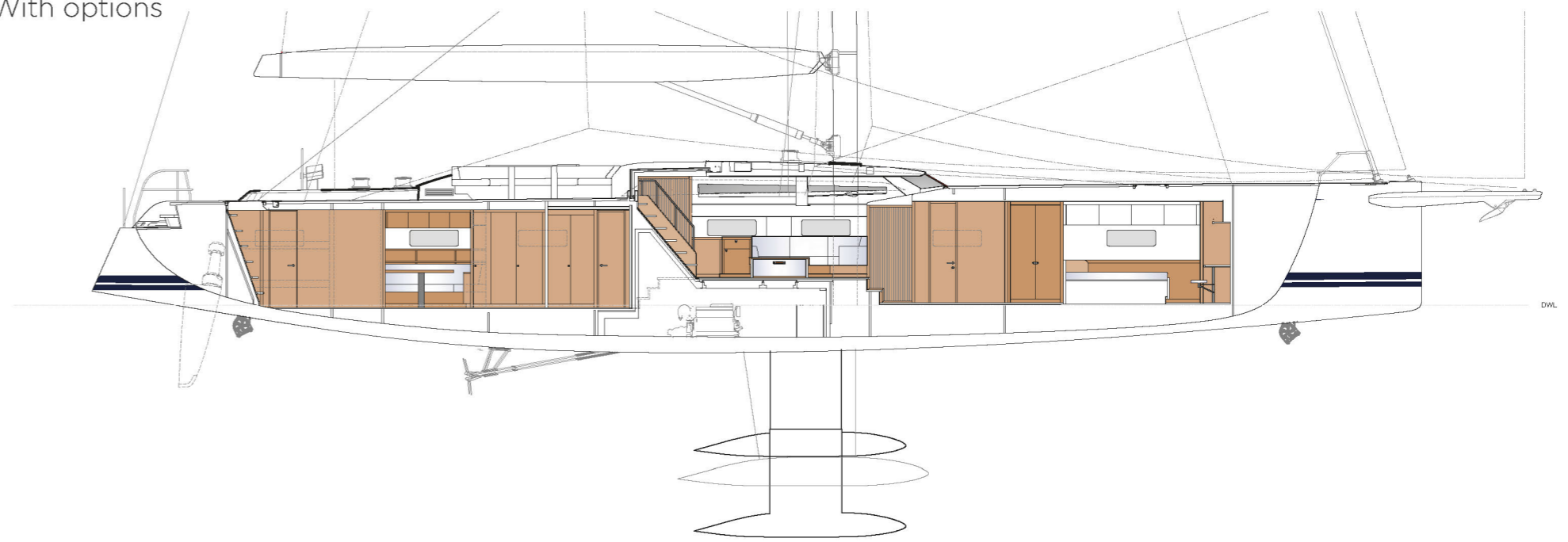
Wine Coves



Standard



With options



Specification

General

Length of hull	26.54 m	87.10 ft
Loadline length	23.99 m	78.71 ft
LOA	28.27 m	92.75 ft
LWL	24.87 m	81.59 ft
Beam max	6.79 m	22.28 ft
Draught (standard keel)	4.00 m	13.12 ft
Draught (shoal draft keel)	3.60 m	11.81 ft
Draughtl (telescopic keel)	3.00 m / 4.60 m	9.84 ft / 15.09 ft
Displacement (light ship)	54.100 kg	119.270 lbs
Ballast (fin and bulb)	15.050 kg	33.180 lbs
Engine, Commins BTA4.5-ME, 4-cyl	172 kW	230 Hp

Rig and sail dimensions

IG	35.61 m	116.83 ft
ISP	38.30 m	125.66 ft
J	10.40 m	34.12 ft
P	35.10 m	115.16 ft
E	11.00 m	36.09 ft
Main sail	236.20 m ²	2.542.40 sq.ft
Jib Area	196.50 m ²	2.115.10 sq.ft

Tank capacity

Fuel	2.800 l	740 USg
Water	1.500 l	396 USg

Classification

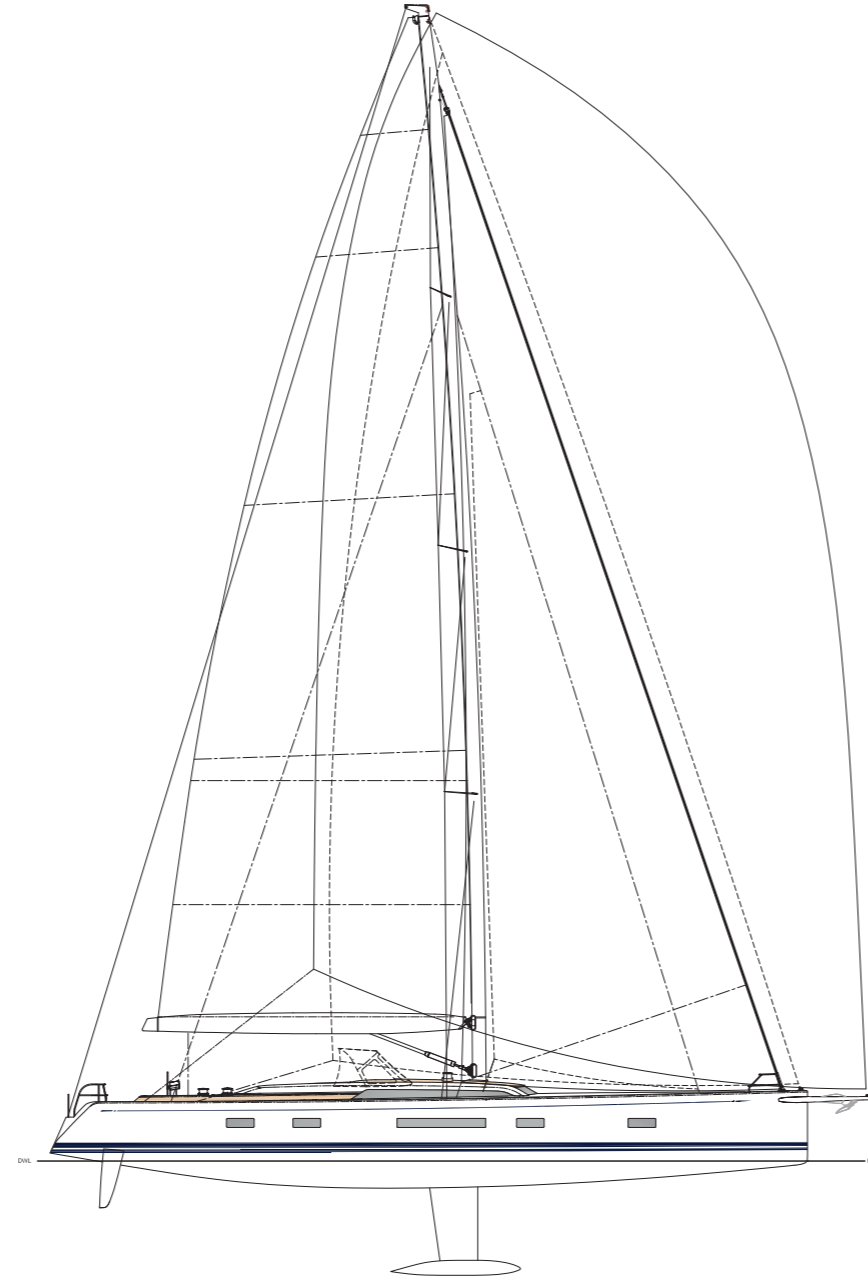
CE-Approval Category A Ocean

Construction

Hull, deck and bulkheads in prepreg glass/carbon sandwich with Corecell foam core, vacuum and oven cured

Naval Architect

Germán Frers



This catalogue contains non-contractual descriptive information about Nautor Swan yachts including drawings, photographs as well as other data. All such information is subject to change at any time without prior notice and does not represent an exact description of any particular yacht. Photos or diagrams could include special equipment that is not part of the equipment supplied by the boatyard. All the information, figures, photographs and data provided in this catalogue are exclusive copyright, industrial property right and property of Nautor Swan.

