

SWAN98













MOOD I - TIMELESS CLASSIC



MOOD II - TRADITION NAVY



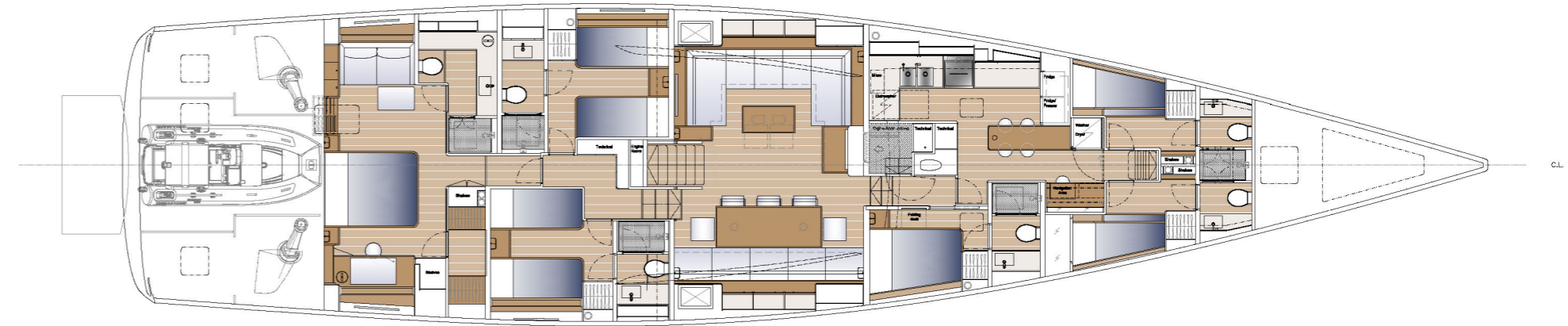
MOOD IV - SPIRIT OF FINLAND



MOOD III - WINE COWES

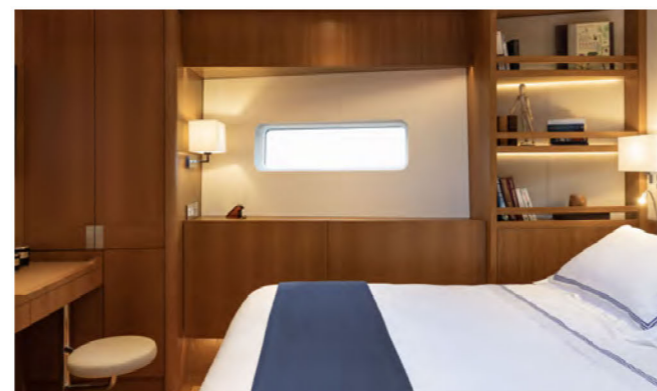
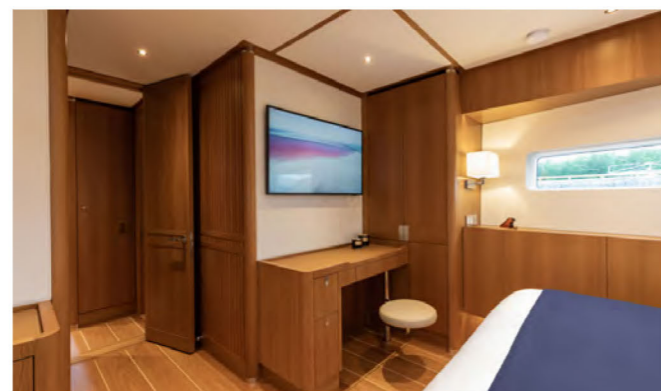
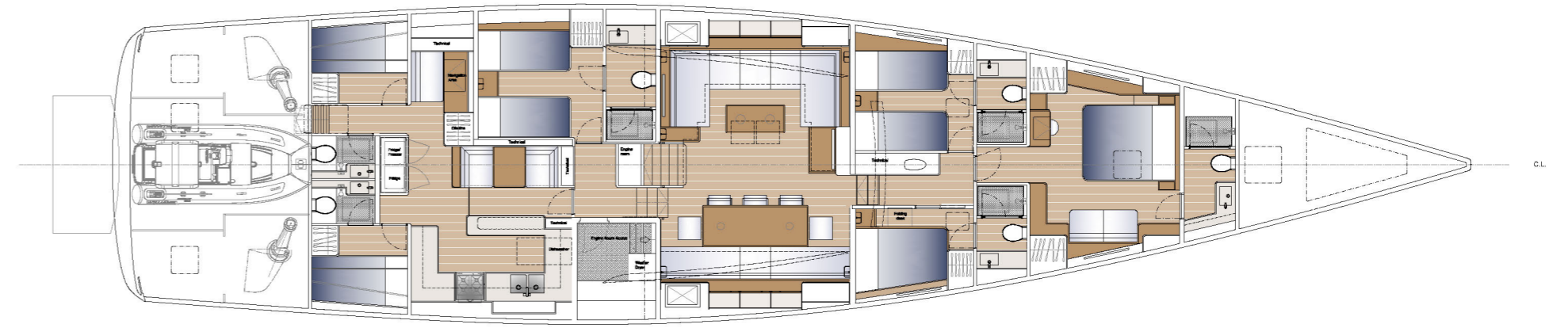


OWNER AFT

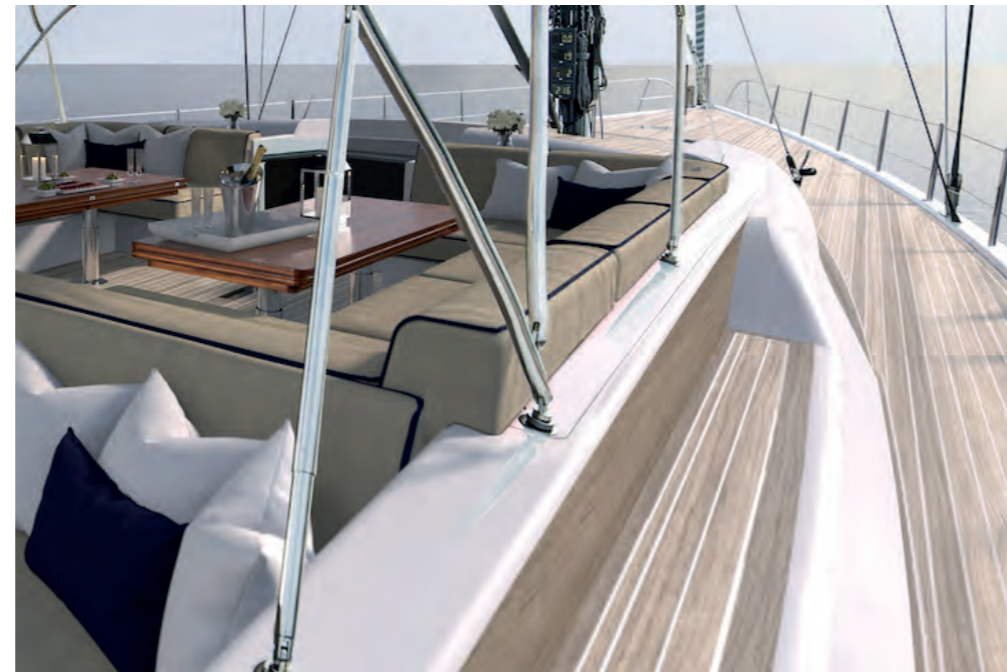




OWNER FORWARD





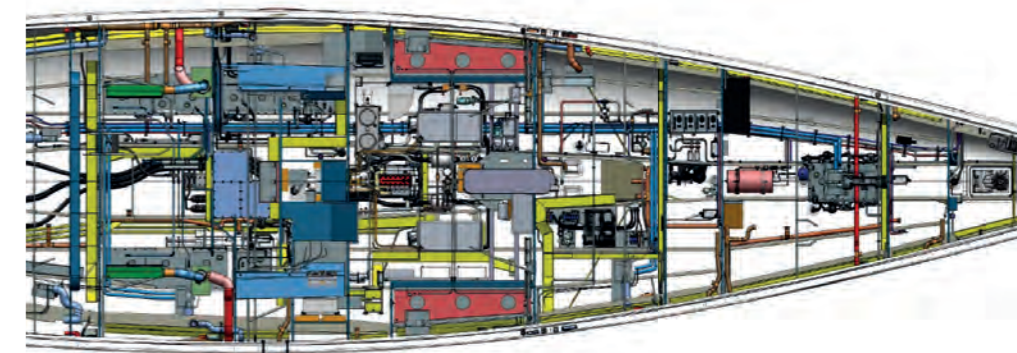


Teak backrest on the couchroof



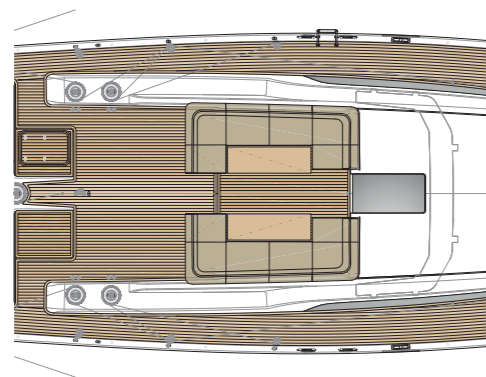
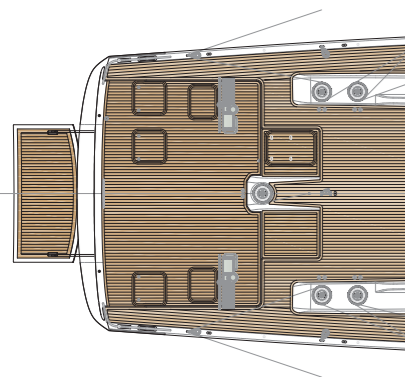
Retractable Sprayhood

DETAILS



Engine room system layout

Bimini



Extra winches for twin backstay



Cushions stacked for seating and storage

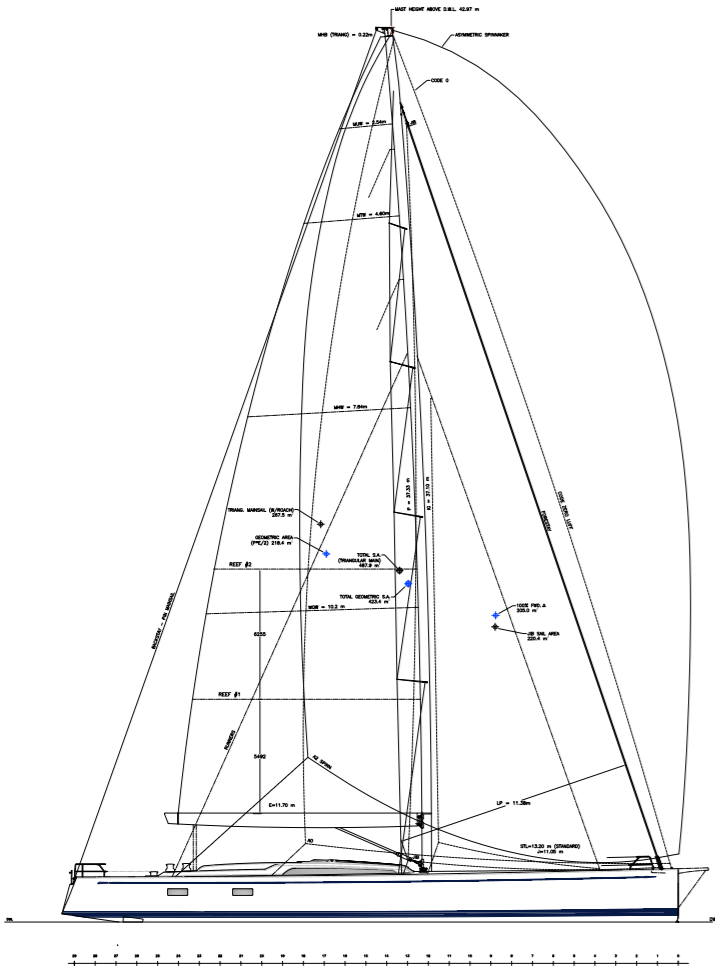


Flush Deck Hatches

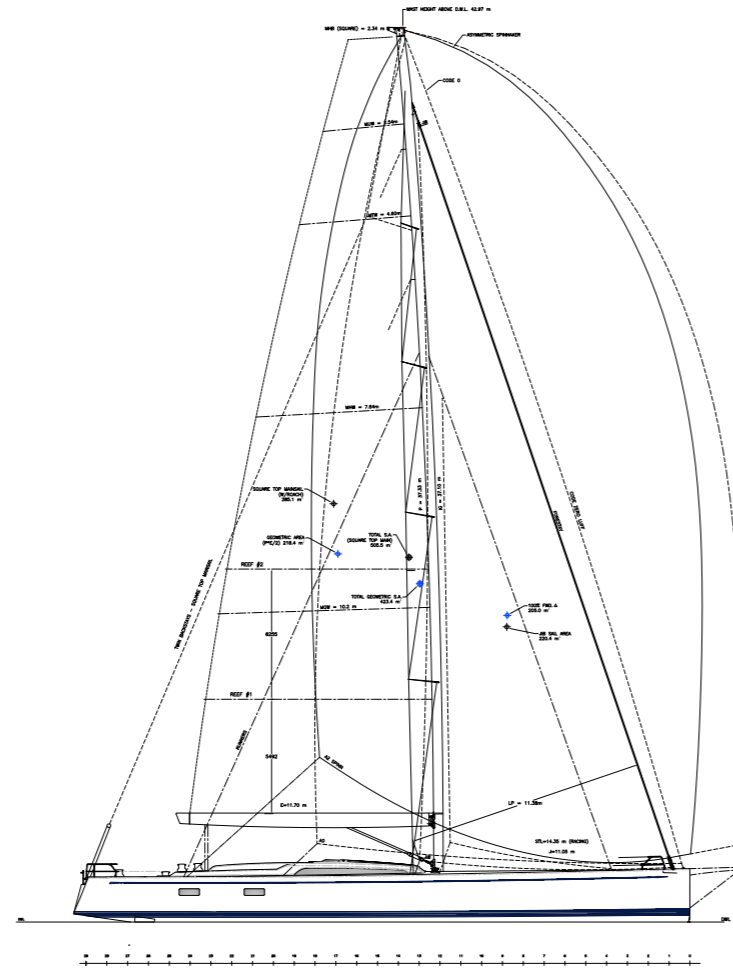


Prism

Two carbon rig configurations available with triangular and square-top mainsail, V-boom or furling, two bowsprit lengths. (2.55 m or 1.45 m both removable with bobstay). A third configuration is possible without bowsprit.



Sail plan



TECHNICAL SPECIFICATIONS

DIMENSIONS

LOA	29.60 M	97.11 FT
LOA (incl. optional bowsprit)	31.05 M	101.87 FT
LWL	26.63 M	87.37 FT
BEAM MAX	6.97 M	22.87 FT
DRAUGHT	4.40 M	14.43 FT
OPTIONAL TELESCOPIC KEEL (approx. draught)	3.20/4.90 M	10.50/16.07 FT
AIR DRAUGHT	42.97 M	140.98 FT
DISPLACEMENT (light)	63.100 KG	139.111 LBS
BALLAST	22.000 KG	48.502 LBS
ENGINE CUMMINS QSB6.7	224 KW	305 HP
STARTING BATTERIES	24V 50 AH / 20 H	
DIESEL GENERATOR	NORTHERN LIGHT M864W3 230 V	
	20 KW 50 HZ	

RIG AND SAIL DIMENSIONS

I	37.10 M	121.72 FT
J	11.05 M	36.25 FT
P	37.33 M	122.47 FT
E	11.70 M	38.38 FT

SAIL AREAS

FORE TRIANGLE	205.0 M ²	2206 SQ.FT
MAIN SAIL	267.5 M ²	2879 SQ.FT
JIB	220.4 M ²	2372 SQ.FT

TANK CAPACITY

FUEL	2950 L	779 USG
WATER	1400 L	369 USG
HOT WATER	160 L	42 USG
GREY WATER	400 L	105 USG
BLACK WATER	400 L	105 USG

HULL AND DECK ARE BUILT USING EPOXY SPRINT® PRE-PREG CARBON FIBRE
 INTERIOR AND EXTERIOR SKINS ON A CORE OF M-GRADE CORECELL FOAM
 TWIN RUDDERS
 4 METRES TENDER GARAGE
 SECONDARY SPRAYHOOD
 SUNBEDS STACKED/UNSTACKED
 4 CABINS LAYOUT FOR CHARTER
 CLASS/MCA NOTIFICATION

NAVAL ARCHITECT
 FRERS NAVAL ARCHITECTURE & ENGINEERING

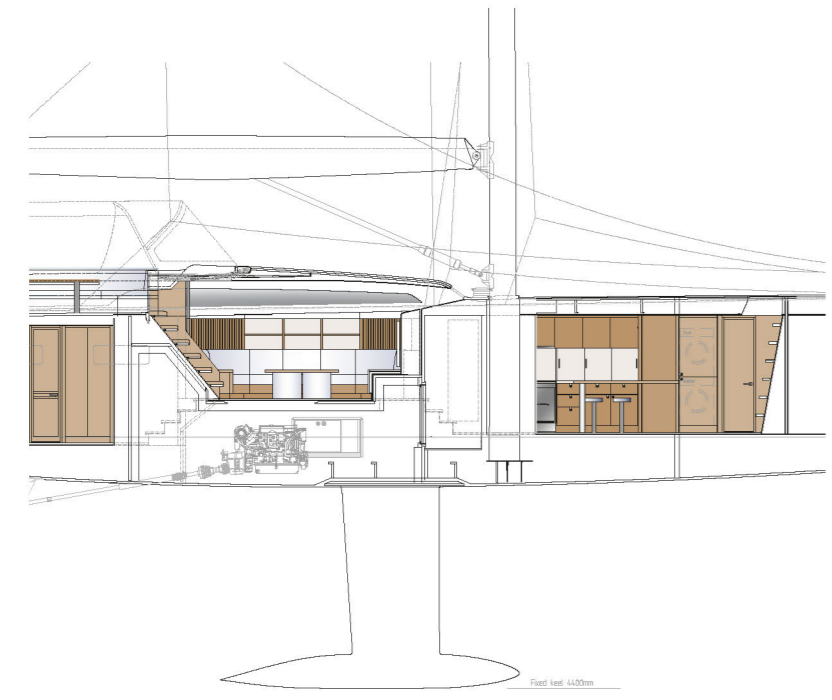
DESIGN EXTERIOR
 GERMÁN FRERS

CONSTRUCTION APPROVAL
 DNV GL PLAN APPROVAL

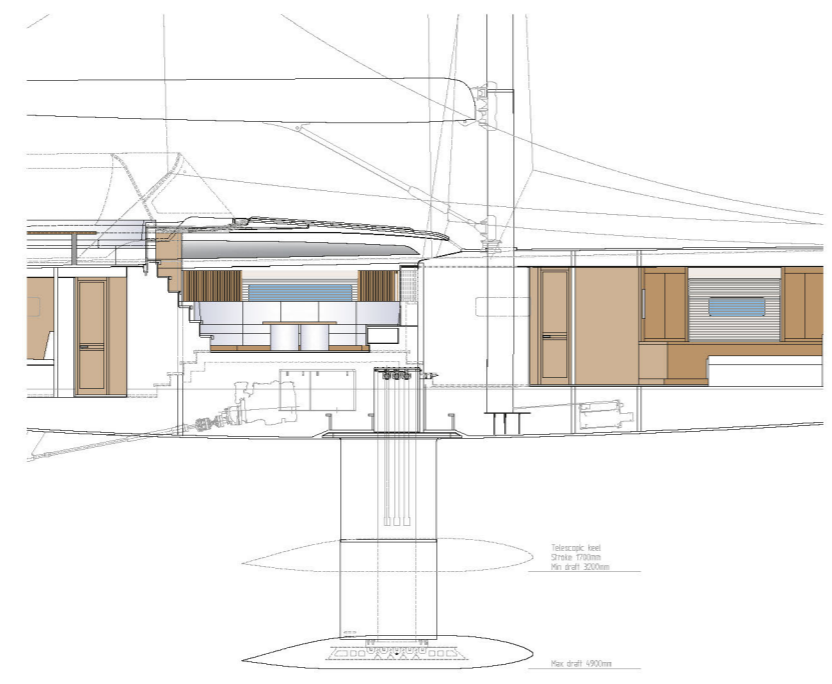
BUILDER
 OY NAUTOR AB

KEEL OPTIONS

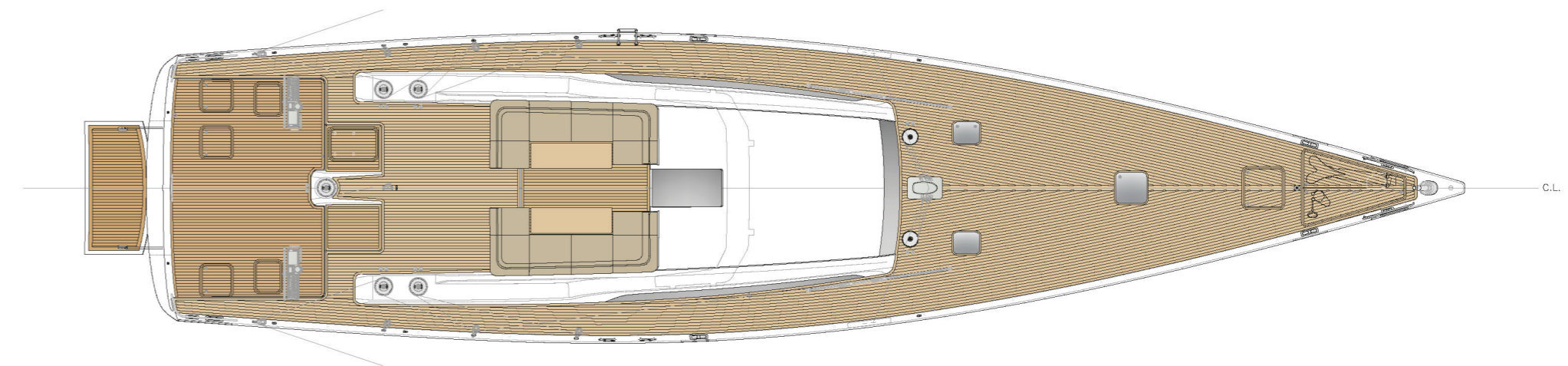
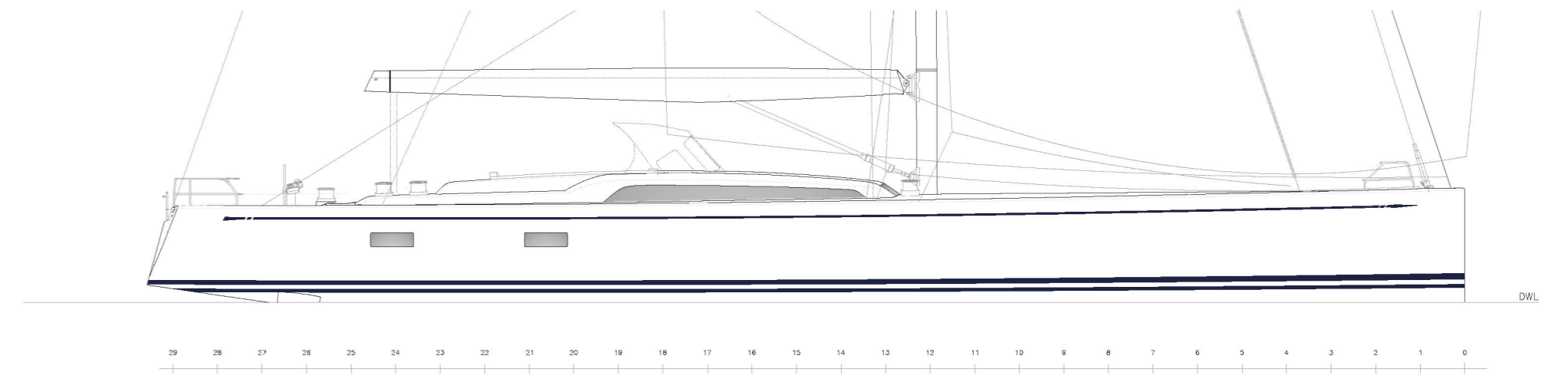
Standard



Optional



Telescopic keel, reduces draught from 4.9 to 3.2 metres



Deck layout



This catalogue contains non-contractual descriptive information about Nautor Swan yachts including drawings, photographs as well as other data. All such information is subject to change at any time without prior notice and does not represent an exact description of any particular yacht. Photos or diagrams could include special equipment that is not part of the equipment supplied by the boatyard. All the information, figures, photographs and data provided in this catalogue are exclusive copyright, industrial property right and property of Nautor Swan.

