

YACHT

SANLORENZO

SP
92/

The SP Line has been conceived for customers who love smart performance yachts.
It embodies the Sanlorenzo view, in which its founding principles of sustainability,
comfort and exclusivity converge.

Less Weight / Less Power / Less Consumption

The SP smart principles

1.

SCR engine gas filter (OPT) to minimize Co2 emissions in the air

2.

Sandwich lamination by infusion, to maximize construction strength and reduce total weight

3.

Fractioned engines power pack to reach the best performances at the lowest fuel consumption

4.

Water jet propulsion for top efficiency and comfort at every speed range

5.

Optional lithium battery pack to run hotellerie mode

6.

Optional solar panels to supply additional power to hotel load
and to the onboard charging systems

7.

Low consumption household appliances

8.

UV resistant glass to reduce use of air conditioning

SP
92/







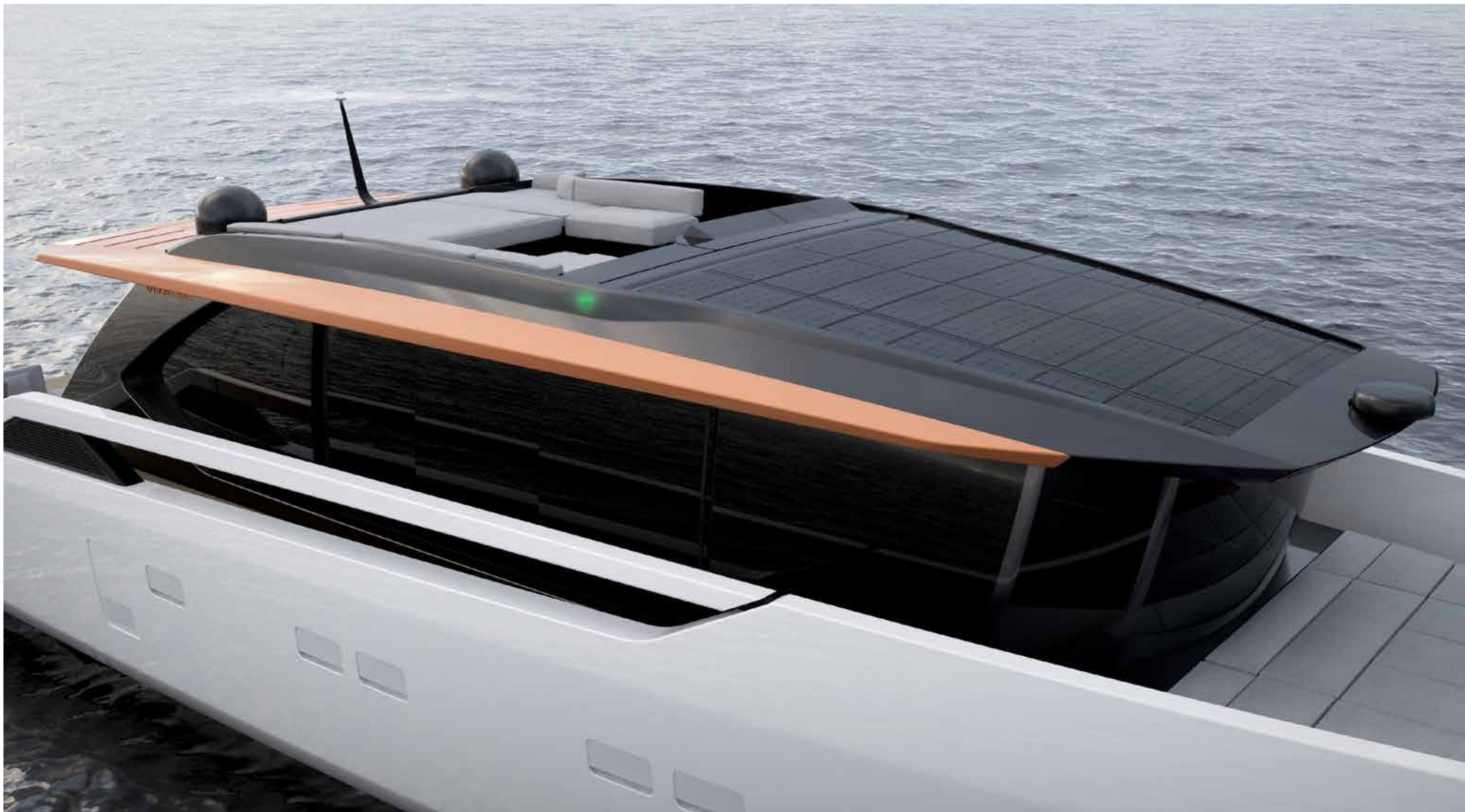


04. Bow



SP92











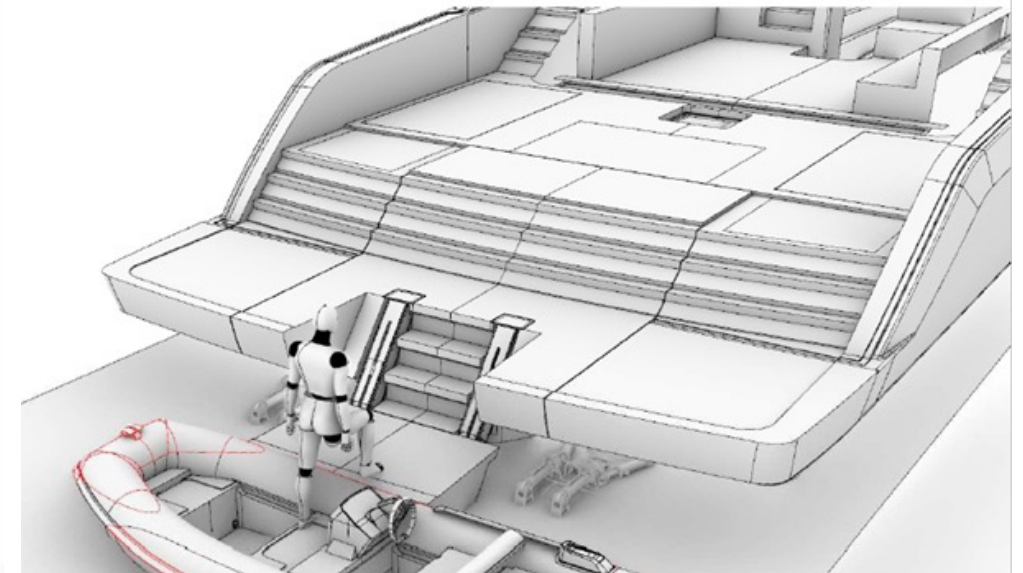
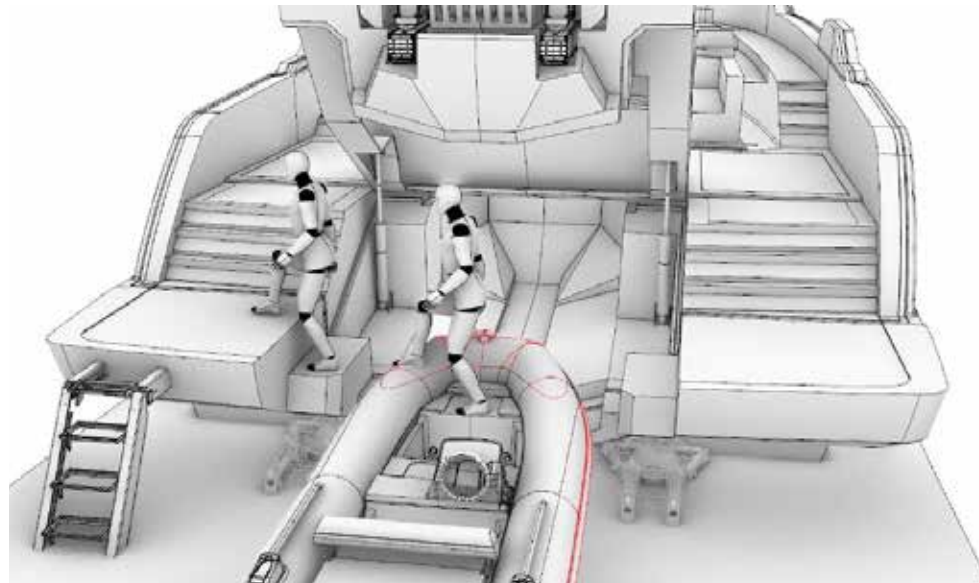
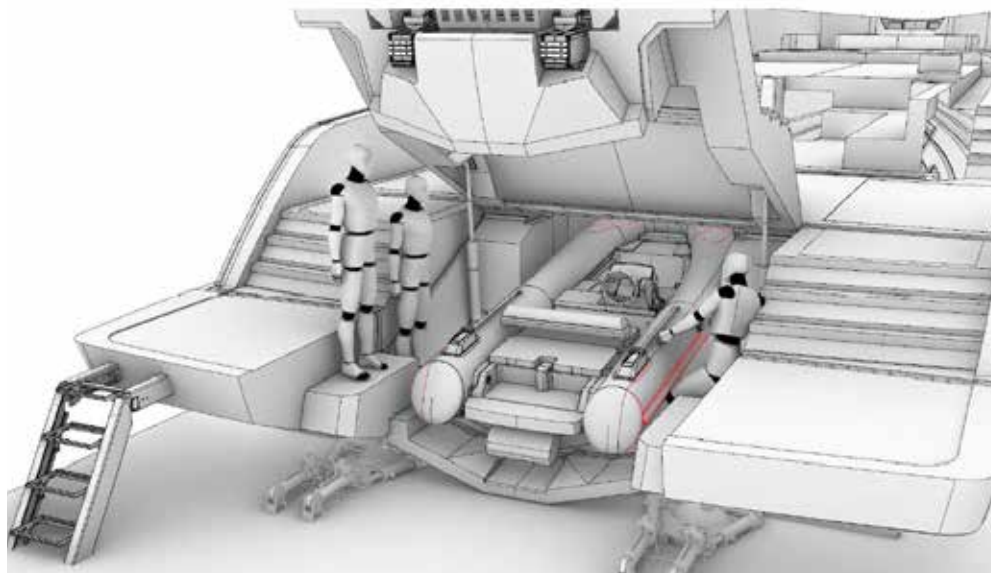








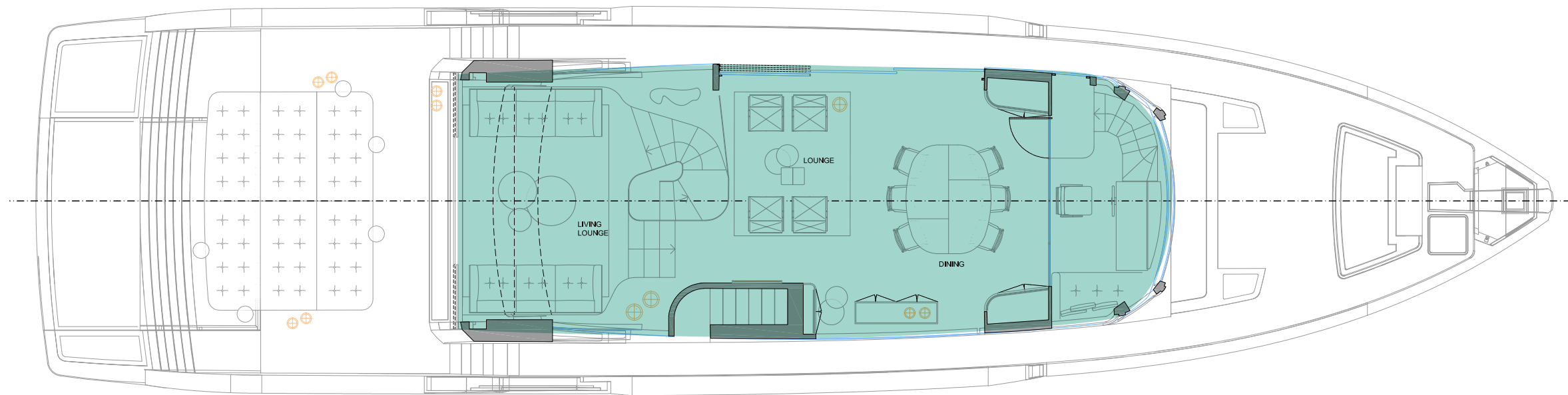




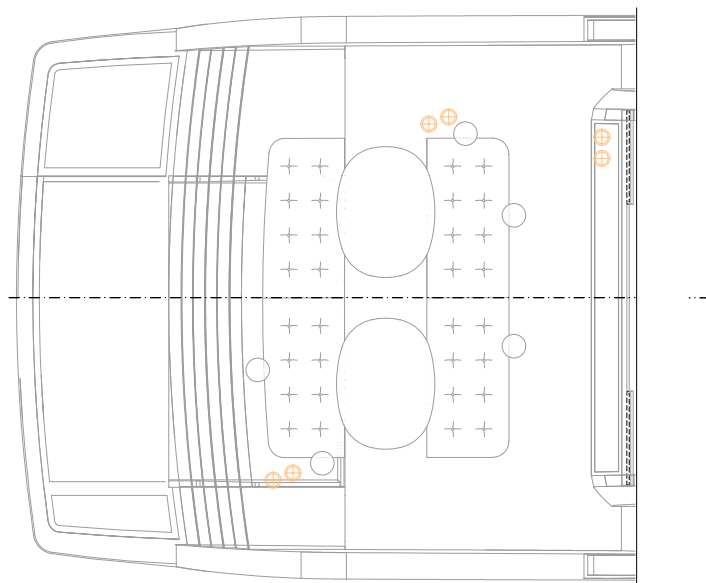


step on
board

SP92
LISSONI SPECIAL EDITION



Conversion



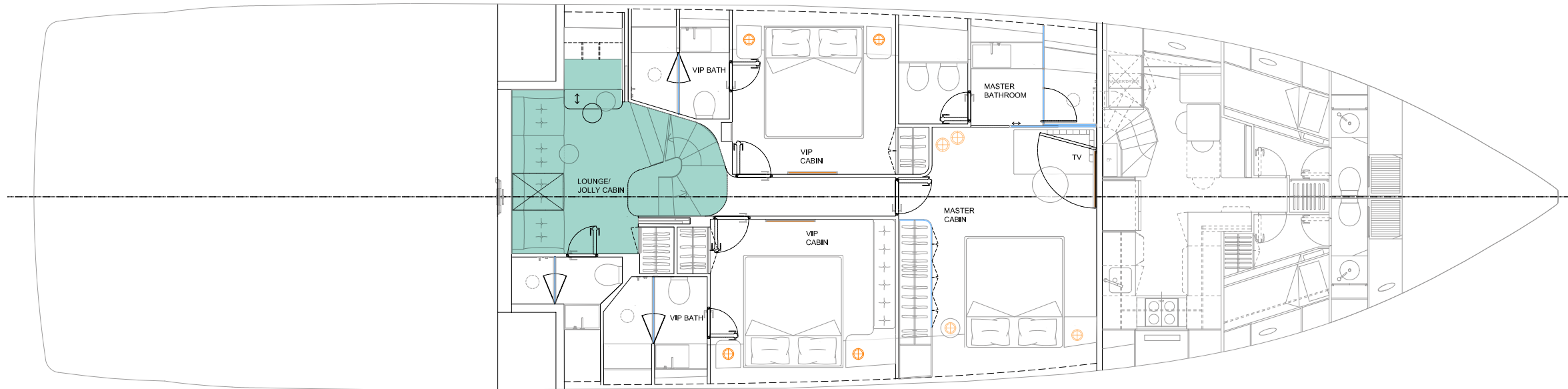


19. Main deck multilevel lounge – Lissoni special edition

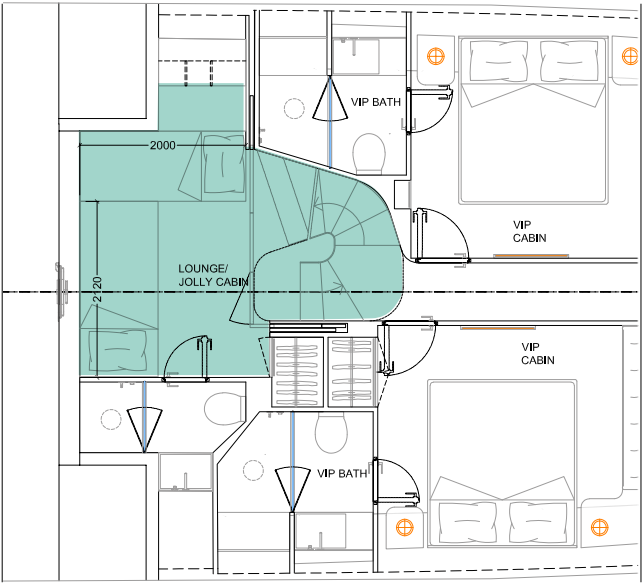




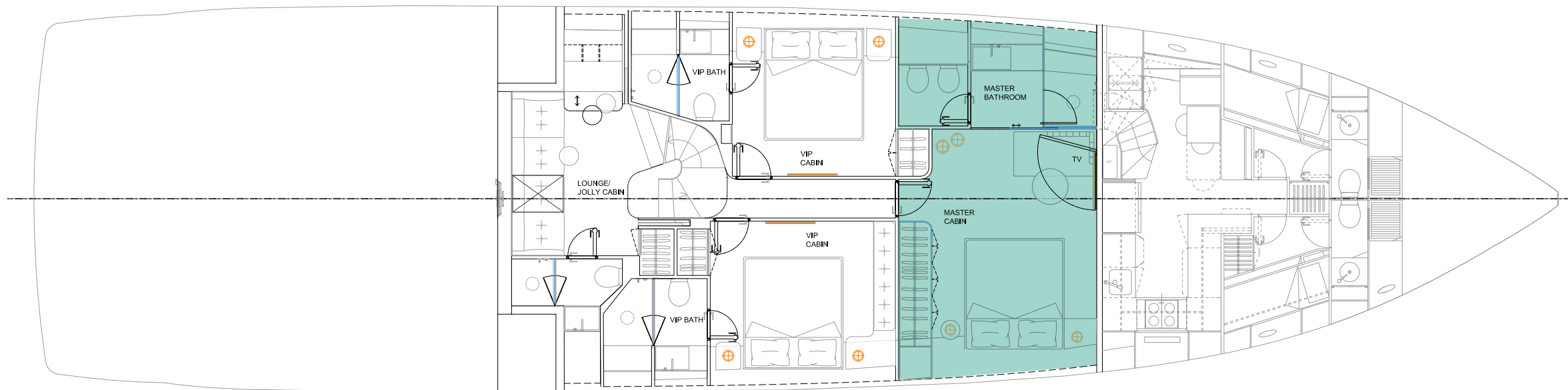
21. Main deck dining area – Lissoni special edition

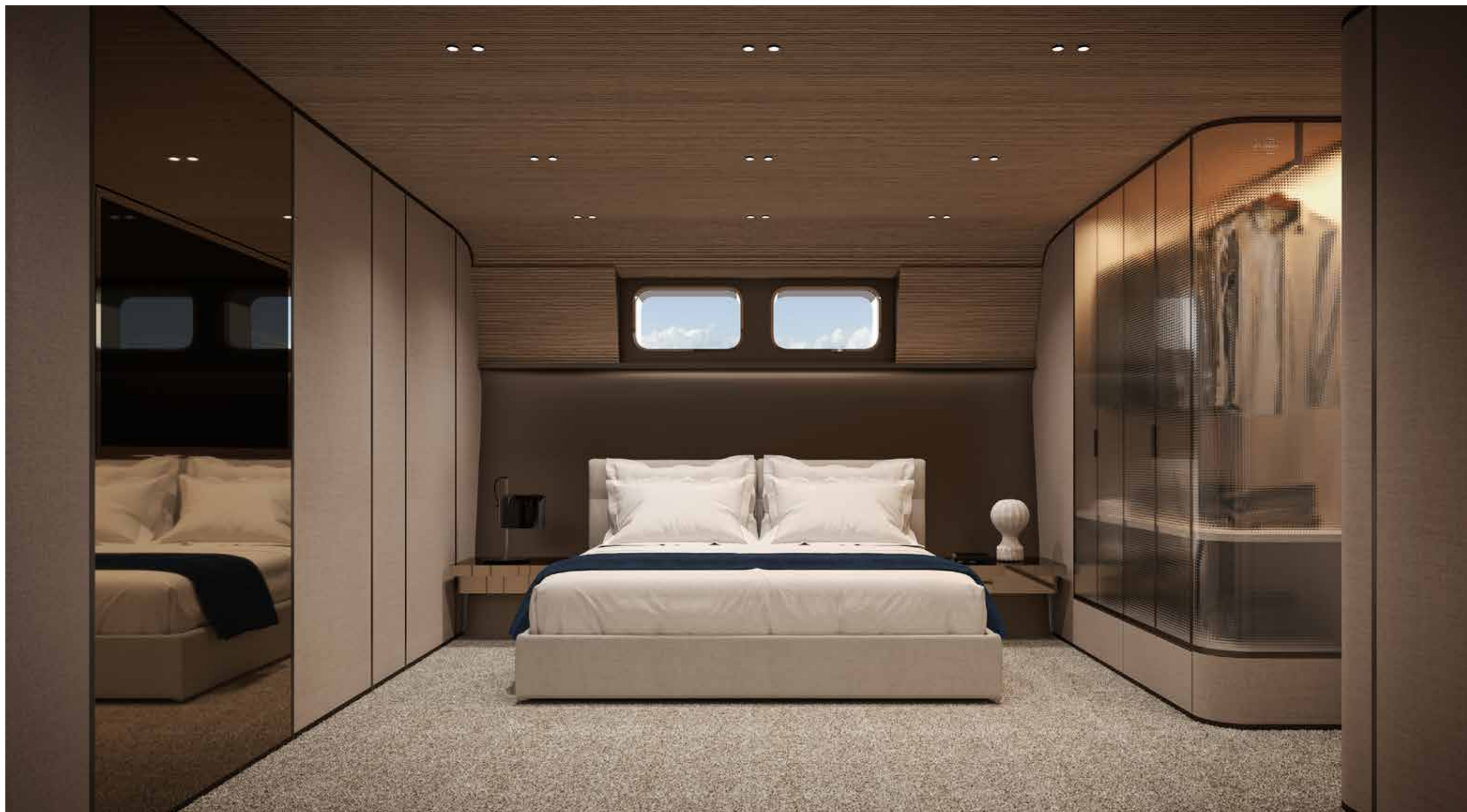


Conversion







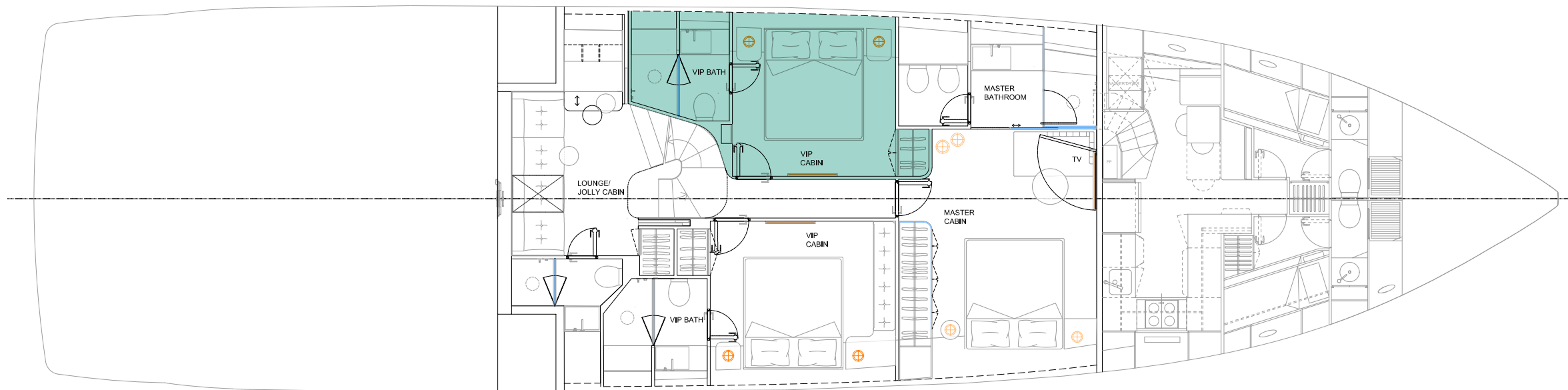


25. Lower deck owner's cabin – Lissoni special edition

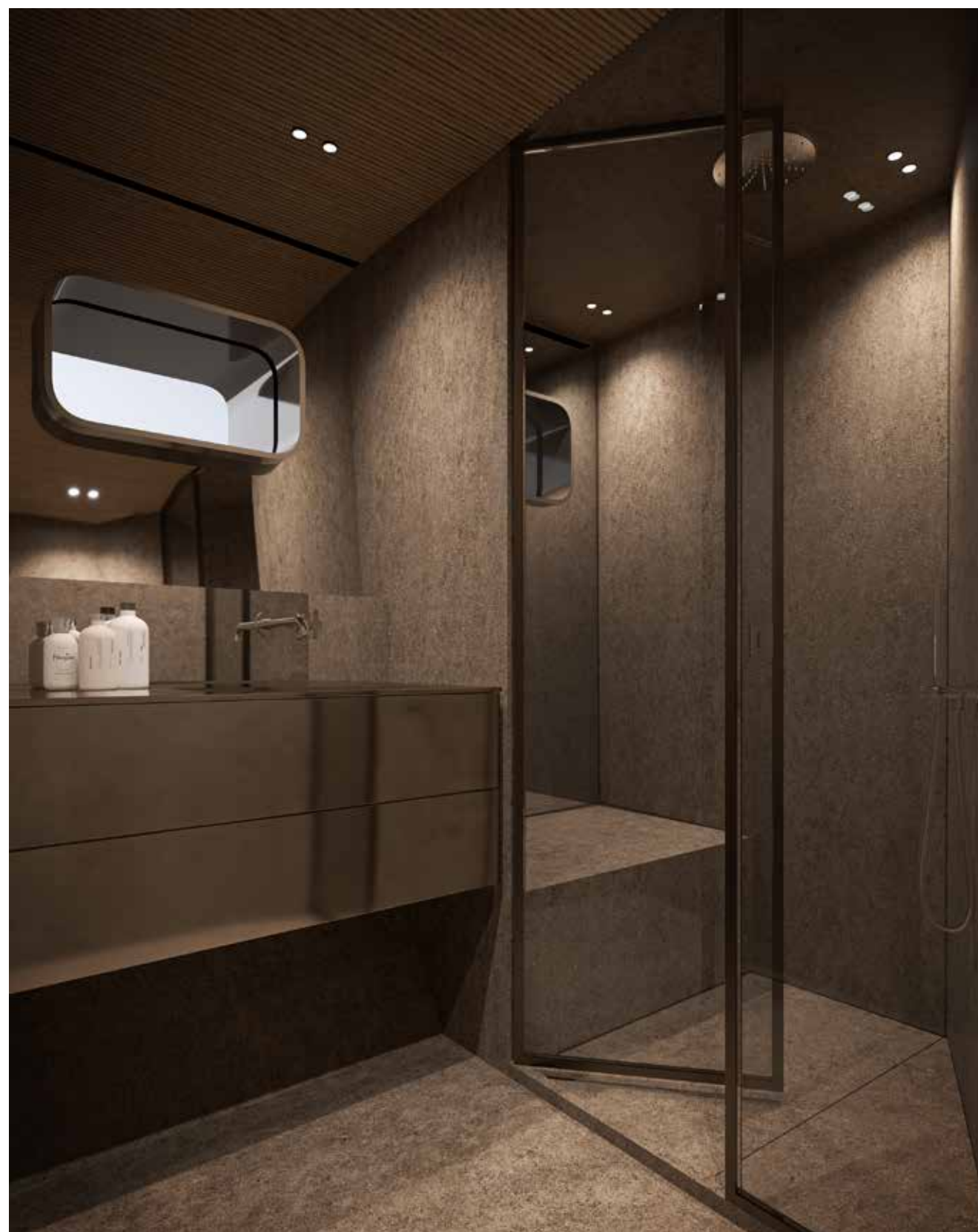


26. Lower deck owner's cabin – Lissoni special edition



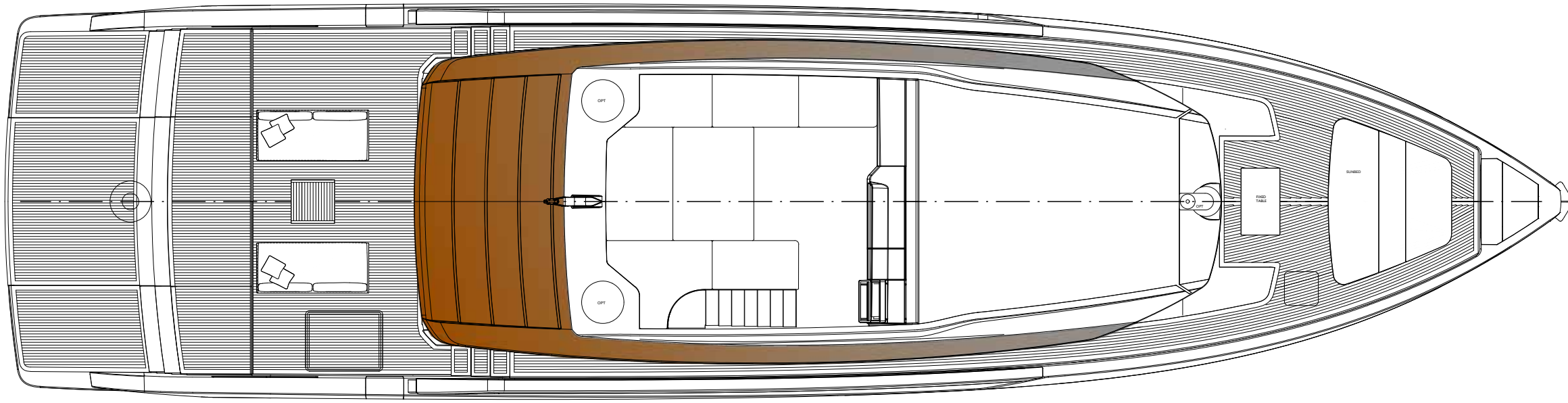


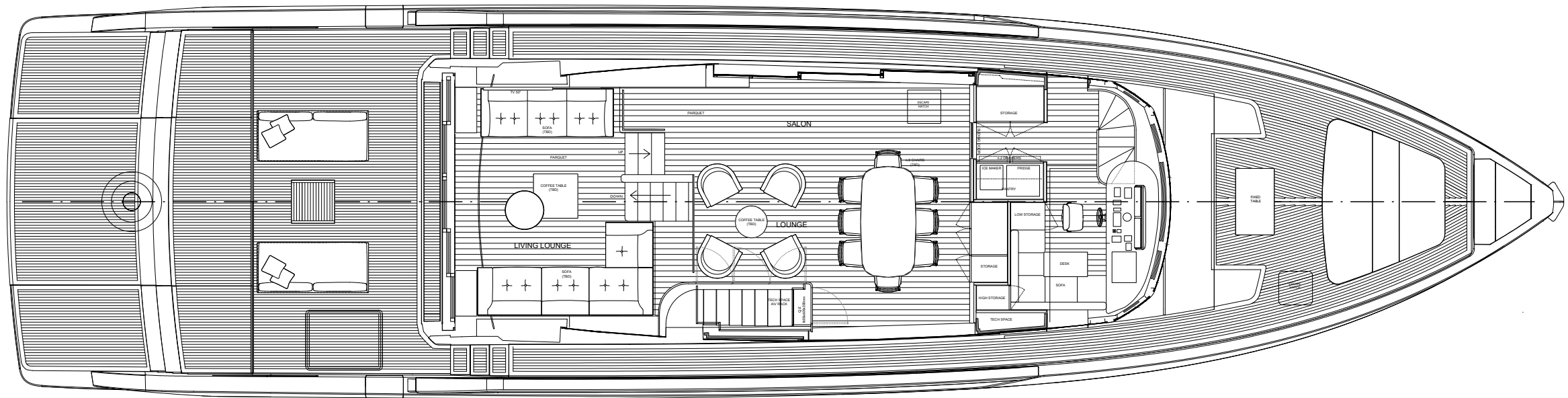




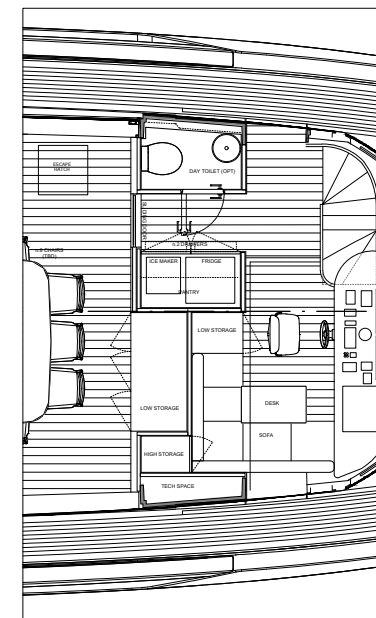
General arrangements & main technical data

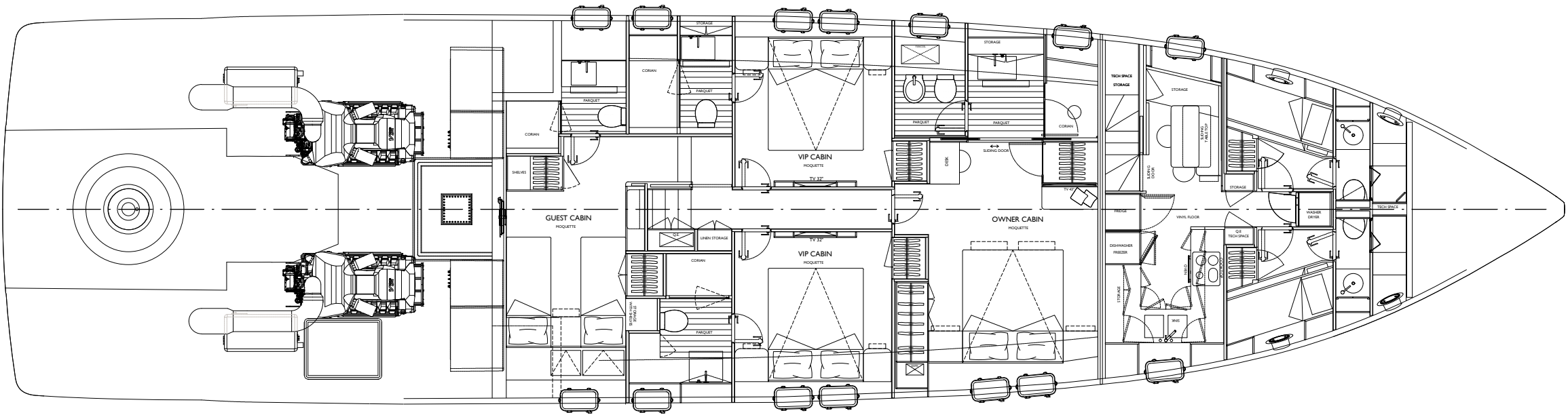




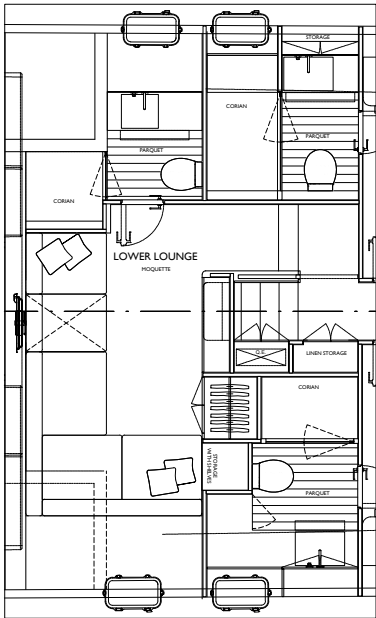


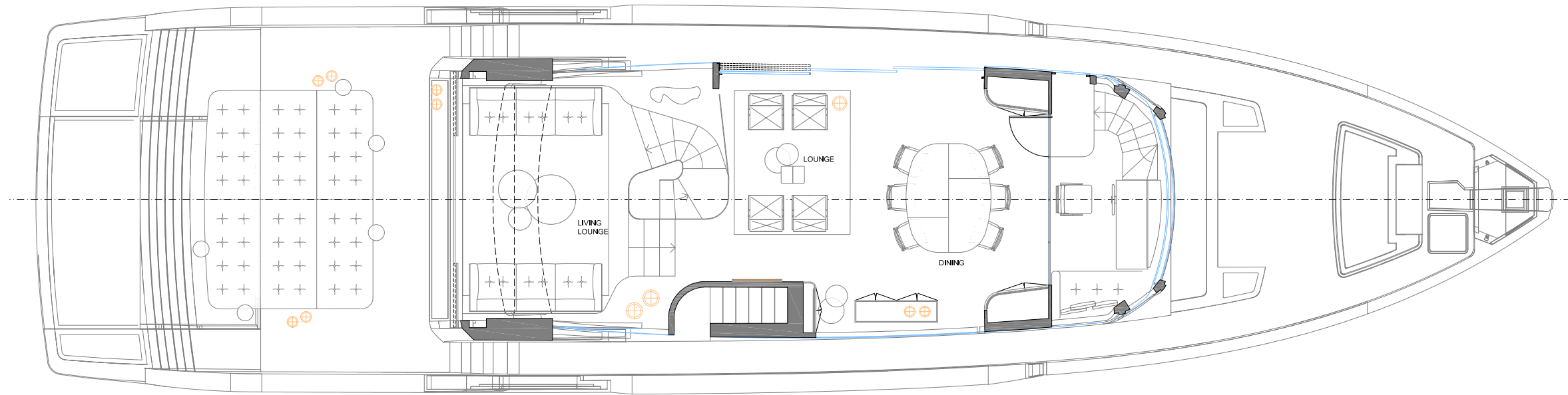
Day toilet



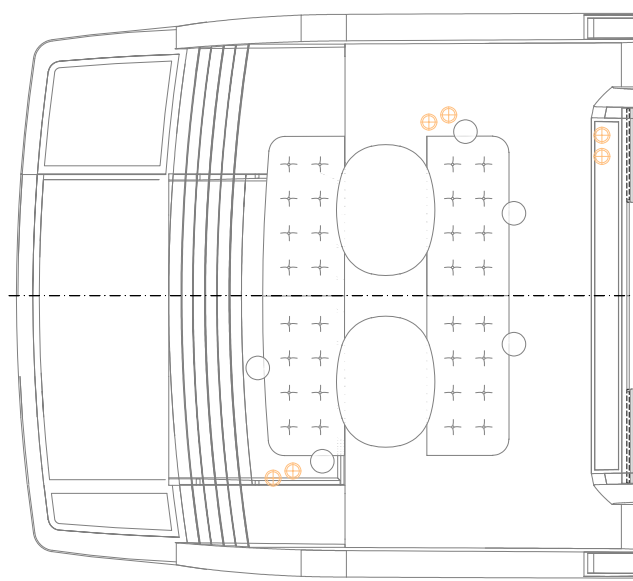


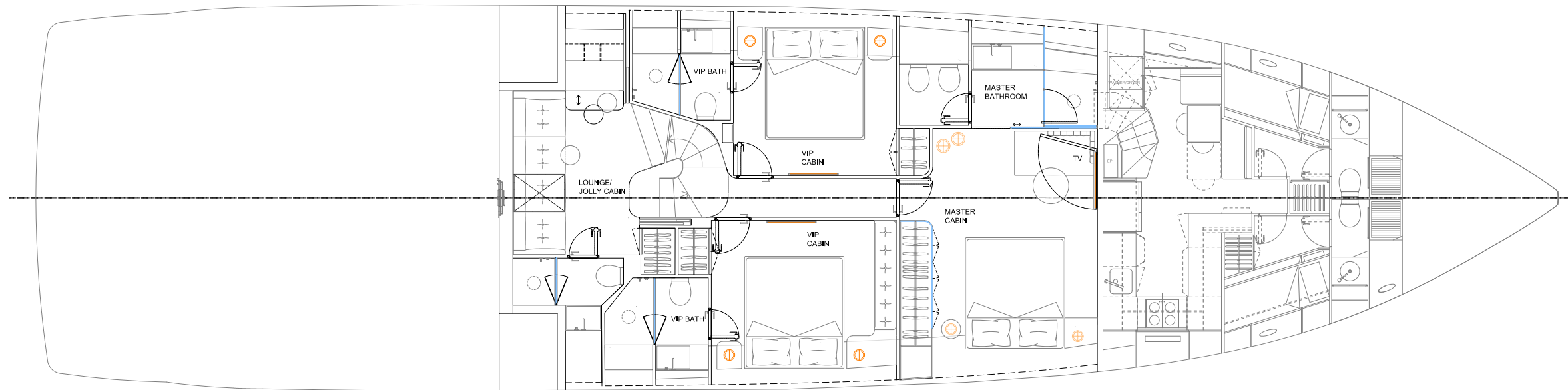
Guest cabin OPT



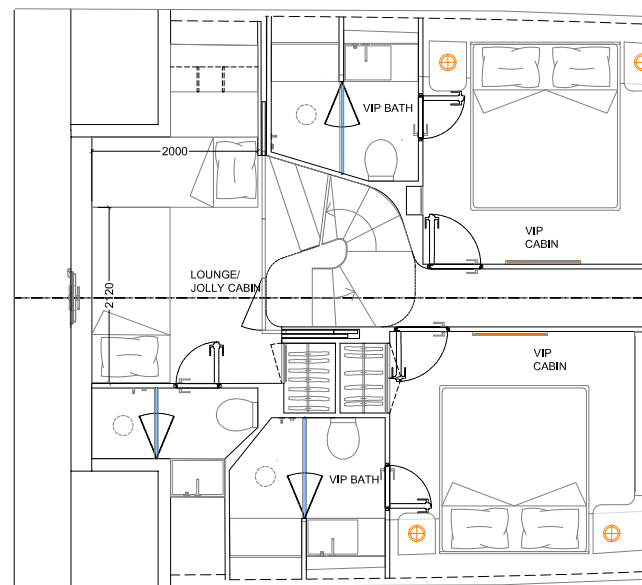


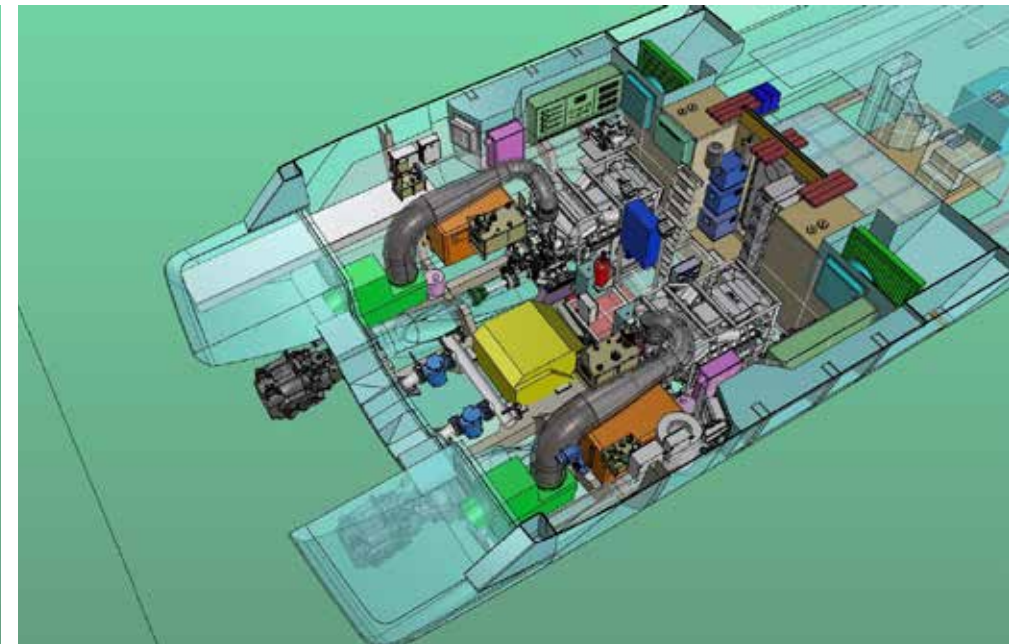
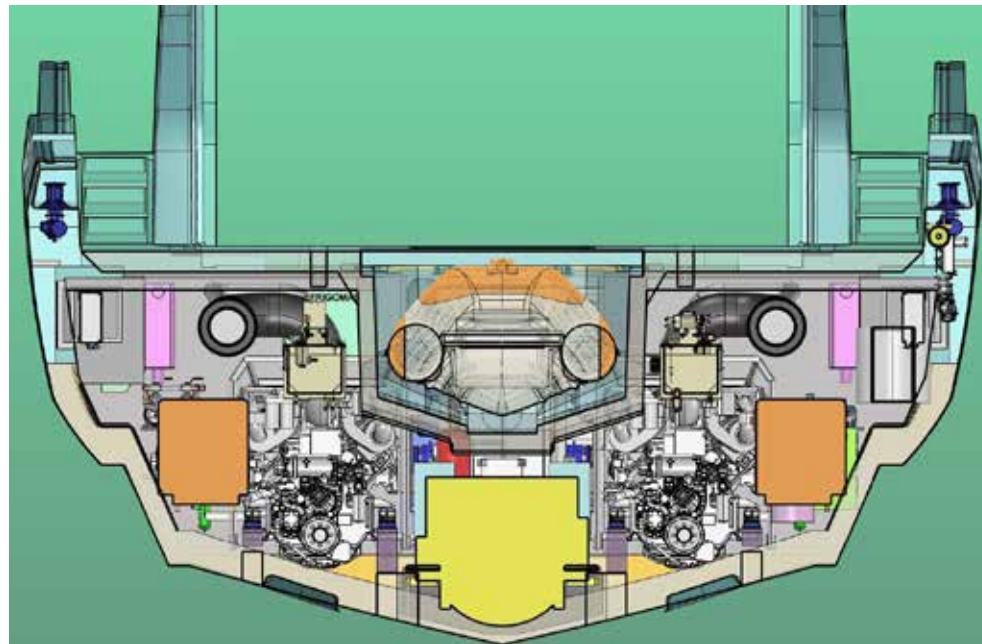
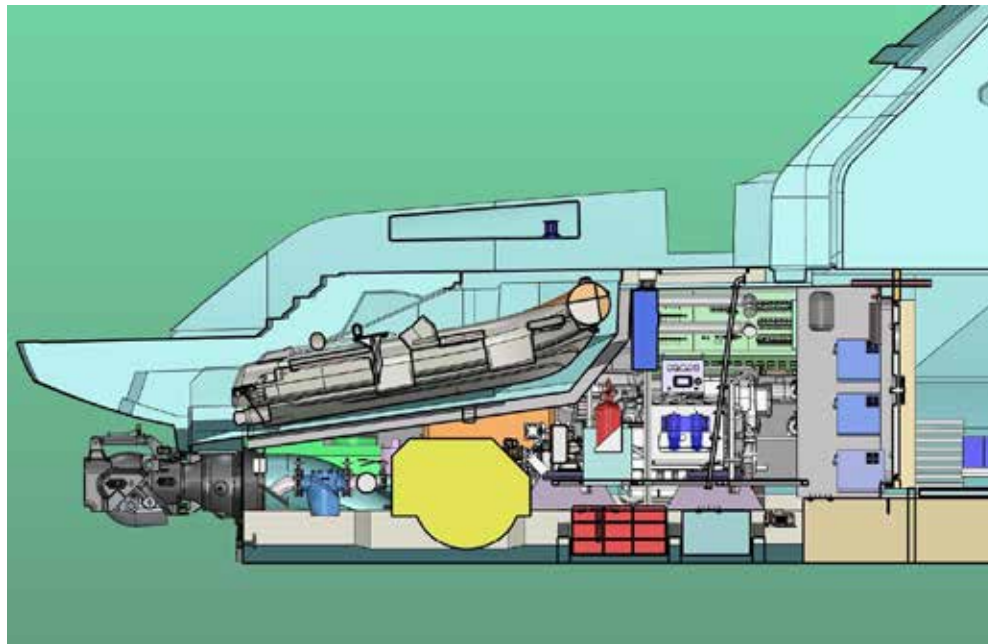
Conversion





Conversion







MJF
A FORCE TO TRUST
CSU series 550



Length overall	27,95 m
Length at waterline	23,90 m
Maximum beam	7,10 m
Construction height	3,70 m
Displacement @ half load (+/-5%) (*)	72 t
Displacement @ full load (+/-5%) (*)	78 t
Draught @ full load	1,20 m
Gross tonnage	145 GT (approx)
Guest accommodation	6/8 people
Crew accommodation	4 people
Engine	2 x MAN V12 - 2000 HP
Consumption (+/-5%) (**)	2 x 400 l/h @ 2300 rpm
Power output @ 100% MCR (**)	2 x 1471 kW@2300 rpm
Gearbox	ZF R=1,800:1
Propulsion	2 Water Jet MJP CSU 550
Gensets	2 x variable speed up to 25 kW
Maximum speed (+/-5%) (***)	40 kn
Cruising speed (+/-5%) (***)	35 kn
Deadrise	14°
A/C power	150000 btu/h (preliminary)
Fuel capacity	8500 l
Fresh water capacity	1000 l
Black water capacity	500 l
Grey water capacity	500 l
Tender length (OPT)	max 3,95 m - (petrol engine)

* Displacement data refers to a yacht with standard layout as described in the sales specification
 ** Main engine performance data and characteristics are derived from the manufacturer's specification
 *** Speed data refer to a yacht with standard layout as described in the sales specification, considering a third of liquid weight, a third of luggage weight (25kg per bed) and 5 crew members (80kg each), and without stabilization system and hard-top.

This brochure shall not be regarded as a contractual offer regarding the sale of yachts from the shipyard to individuals or companies. All the information contained in this brochure, including without limitation any technical or performance data, pictures, and drawings, are mere indications with no contractual value.

This document is based on the information available at the time it is published. In spite of the commitment aimed at guaranteeing maximum possible accuracy, the information contained herein may not cover all the details and any technical-commercial modifications introduced after printing, or may describe features that are not present.