

AZIMUT S6

€2,000,000 | Year: 2023 | Length: 57.58 ft | Hong Kong



AZIMUT S6

OVERVIEW

This brand new unused 2023 AZIMUT S6 is currently located in Hong Kong and she is on sale asking for EURO 2,000,000.00.

This single deck sport yacht has fitted with 3 brand new VOLVO IPS 700 D8 550HP Engines which allow her to easily reach up to a top speed at 35 knots and a cruising speed at 30 knots. All the onboard equipment is supported by the KOHLER 18kW generator and a QUICK MC2 Gyro is installed for maximum comfort.

The S6 is a very popular sport yacht from AZIMUT. Adopting the Carbon-Tech technology for weight saving and structure stiffening, the yacht has a bigger volume but lighter in weight so the yacht can be very agile. The 3 pod engines combined with the streamlined hull design has allowed the yacht to be 20% more efficient than its competitors.

The very welcoming cockpit layout providing a big L-shape sitting area for outdoor dining. Getting inside of the yacht, you will be greeted with the beautifully crafted furniture. The galley area is at the port side of the saloon, providing great convenience for guest at both inside or outside of the yacht to pick the food and beverage they will need. The 3 bedrooms are at the lower deck of the yacht, providing 6 comfortable sleeping spaces.

This sporty cruiser does not sacrifice the flybridge space like all other typical sport cruiser in the market. This AZIMUT S6 has a proper flybridge floor with helm station so captain can pilot the yacht with great visibility on top. The aft flybridge area is a lounge sitting area for guests to socialize and rest.

This sleek looking sport cruiser is ideal for owner who has strong desire on performance. A great example of this popular yacht available immediately. For viewings and further information, please feel free to contact us.

MEASUREMENTS

Length: 57.58 ft

Beam: 15.42 ft

Displacement:

PROPULSION

Engine No: 1

Engine Make: Volvo

Engine Model: IPS 700 D8

Engine Year: 2023

Engine Fuel Type: diesel

Engine Power: 550HP

Engine No: 2

Engine Make: Volvo

Engine Model: IPS 700 D8

Engine Year: 2023

Engine Fuel Type: diesel

Engine Power: 550HP

Engine No: 3

Engine Make: Volvo

Engine Model: IPS 700 D8

Engine Year: 2023

Engine Fuel Type: diesel

Engine Power: 550HP

CONSTRUCTION

Yachting Freedom since 1984



T: +852 25555 8377

Builder: Azimut

Designer: Stefano Righini

Max Draft: 5.28 ft

BOAT DETAILS

Exterior Features and Equipment

- Side boarding gates
- Main Deck Cockpit
 - Cockpit furniture with ice maker, barbecue and sink
 - Cockpit table with Carbon fibre finishing
- Main Deck Bow Area
 - Sunbed area with cushions
- Swimming Platform
 - Team high-low swimming platform
- Flybridge area
 - Upper deck helm station with co-pilot seat
 - Bimini top

Interior Features and Equipment

Main Deck Saloon

- Mesh covers for windows
- Décor upgrade
- Living Room: High-low TV system in Saloon

Lower Deck

- 1 Master bedroom (ensuite bedroom with double bed)
- 1 VIP bedroom (ensuite bedroom with double bed)
- 1 Guest bedroom (2 single-beds configuration)
- 1 Day head (2 doors to access, from corridor or from VIP room)

Galley

- Miele Appliances (upgrade for oven and cooktop)
- Dishwasher
- Washer and Dryer

Master Cabin

- TV in cabin

Electrical and Mechanical Equipment

- 3 x VOLVO IPS D8 550HPengines
- 1 x KOHLER 18kW generator
- Bow thruster 6.5kW
- Water-maker 55L/H
- Air conditioning 72,000 BTU
- Auto dynamic trim Volvo Interceptors

HOW CAN WE HELP?

E: brokerage@simpsonmarine.com T: +852 2555 8377

SIMPSONMARINE.COM

Yachting Freedom since 1984



T: +852 25555 8377

- Automatic Fire Fighting system
- Chaincounter in main helm
- Electric cockpit mooring winches
- Electric searchlight
- Hauling/launching system for tender

Electronics and Navigation Equipment

- Raymarine Chartplotter Axiom 12 colour display with GPS with RMK-10 control at lower helm station
- Raymarine Chartplotter Axiom 12 colour displays with GPS with RMK-10 control at fly helm station
- Raymarine Quantum Radar
- Raymarine Ray 90 VHF Radio
- Raymarine SMART DSTBOO echosounder transducer
- Raymarine fishfinder CP100

Disclaimer

The Company offers the details of this vessel in good faith but cannot guarantee or warrant the accuracy of this information nor warrant the condition of the vessel. A buyer should instruct his agents, or his surveyors, to investigate such details as the buyer desires validated. This vessel is offered subject to prior sale, price change, or withdrawal without notice.

CONTACT INFORMATION

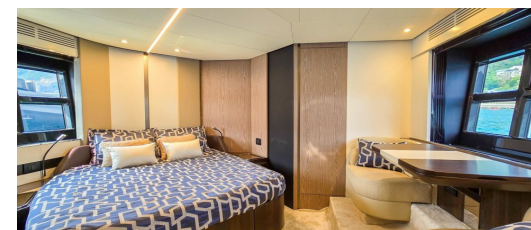
Seen a Yacht you like? Contact our Hong Kong Team now to arrange your virtual viewing. We will be happy to step on board and host a video call with you, allowing you to look around the yacht in person and direct us to the features and areas which interest you the most. We are open, boat yards are open and independent surveyors are available in Hong Kong. We are ready to do business and can ship yachts to any region in the world. We look forward to hearing from you soon.

HOW CAN WE HELP?

E: brokerage@simpsonmarine.com T: +852 2555 8377

SIMPSONMARINE.COM

AZIMUT S6



AZIMUT S6



AZIMUT S6



AZIMUT S6



AZIMUT S6

