

SANLORENZO SL78

€3,600,000 | Year: 2020 | Length: 80.84 ft | Hong Kong



SANLORENZO SL78

OVERVIEW

Beautifully appointed and carefully maintained 2020 Sanlorenzo SL78 flybridge yacht for sale in Hong Kong. Graceful in her lines, yet still robust and steady in the water, this sleek Italian motoryacht represents an incredible opportunity to join the elite family of Sanlorenzo owners worldwide. This particular SL78 is beautifully specified with a light and modern interior using different wood, marble and fabric textures to provide a subtle yet lively and interesting decor. Fitted with a 4 cabin (4 ensuite heads) layout, and powered by twin MTU 1622 horsepower engines, this yacht cruises at 23–25 knots with a top speed around 30 knots. As always standing out against competing shipyards, a jet-tender of up to 3.85m can fit in the yacht's garage (a rare feature in this size range).

The SL78 is the entry-level model in the SL range, Sanlorenzo's fleet of fiberglass, planing-hull motor-yachts. The SL78 features floor to ceiling windows on the main deck, so the open-plan main saloon is bathed in natural light, making the entire space seem even bigger than it already is. An interior floating staircase, a beautiful design feature, leads up to the flybridge, which is covered by a smartly operated hardtop for ample shade and also has plentiful space where guests can enjoy the views. The flybridge is an oasis of calm with free standing designer furniture and a well-equipped Boffi galley – giving the feeling of a luxury villa on the sea.

Available for viewings in Hong Kong.

MEASUREMENTS

Length: 80.84 ft

Beam: 18.83 ft

Displacement: 154,323.58 lb

PROPULSION

Engine No: 1

Engine Make: MTU

Engine Model: 10V2000M96L

Engine No: 2

Engine Make: MTU

Engine Model: 10V2000M96L

Yachting Freedom since 1984



T: +852 25555 8377

Engine Fuel Type: diesel

Engine Fuel Type: diesel

Engine Power: 1622HP

Engine Power: 1622HP

CONSTRUCTION

Builder: Sanlorenzo

Max Draft: 10.14 ft

BOAT DETAILS

Features & Optional Equipment

- SAT Antenna NAVISYSTEM MST65 HT
 - Predisposition for Modem internet WiFi 4G with harbour hotspot antenna (only cables)
 - Sun awning for the stern area of the fly
 - Additional battery charger 12V 25A for generator batteries
 - Raymarine integrated dashboard system and ship monitoring
 - Empty radome NAVISYSTEM MST65 HT
 - Raymarine GOLD package (diff from SILVER std configuration)
 - TVCC camera with 1 fixed camera in engine room & 1 fixed camera in cockpit
 - TV behind the stopsol mirror in the owner and VIP cabins
 - GOLD Audio/Video package (diff. from STD SILVER)
 - Roda Spinnaker dining table on Flybridge (di. From STD)
 - Search light with control on wheelhouse and Dy console
 - Teak floor for flybridge
 - External inox shower column
 - Teak floor on bow area
 - Hard top with opening roof electric blades
 - Upgrade tropical air conditioning (diff from STD)
 - Additional insulation for fin stabilizer boxes
 - Shower heads in all bathrooms (std only in owners) -EXCEPT CREW
 - Parquet Door in Main Deck salon (diff from carpet STD)

HOW CAN WE HELP?

E: brokerage@simpsonmarine.com T: +852 2555 8377

[SIMPSONMARINE.COM](https://www.simpsonmarine.com)

- N 2 TV wood cabinets in guest cabins
- Artemide ceilings lamps in saloon (diff from STD)
- All Beds and headboards covered in leather (ref. Nuvola leather)
- Strip LED under beds and bedside tables in master and VIP cabins
- Strip LED behind curtains in saloon
- N1 Marble wall in owner's shower (ref. coffee brown marble) diff from STD
- N4 Marble sinks in all bathrooms (ref. coffee brown marble) (diff from ceramic STD)
- Additional crew cabin (without bathroom)
- Predisposition for electric stern thruster (battery box & electric panel)
- Additional insulation between engine room and owner' s cabin
- Fins stabiliser system ZERO SPEED (underway and at anchor)
- Carpet in salon SUPER TUFT SANTUSHTI col. WEAT
- Grill on fly bar cabinet
- Icemaker EXTERNAL REFILL on fly bar cabinet
- No 2 Roda Basket sofa on flybridge in milk structure and Sand belt, with one arm and seat and back cushions in Panama XOI pearl fabric Roda
- UK sockets (diff.from standard EU 220V sockets)
- Kohler Generators – 26kW and additional 25kW (1600 hours – October 2023)

Disclaimer

The Company offers the details of this vessel in good faith but cannot guarantee or warrant the accuracy of this information nor warrant the condition of the vessel. A buyer should instruct his agents, or his surveyors, to investigate such details as the buyer desires validated. This vessel is offered subject to prior sale, price change, or withdrawal without notice.

CONTACT INFORMATION

Seen a Yacht you like? Contact our Hong Kong Team now to arrange your virtual viewing. We will be happy to step on board and host a video call with you, allowing you to look around the yacht in person and direct us to the features and areas which interest you the most. We are open, boat yards are open and independent surveyors are available in Hong Kong. We are ready to do business and can ship yachts to any region in the world. We look forward to hearing from you soon.

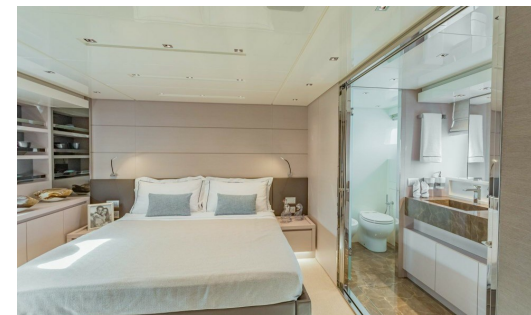
SANLORENZO SL78



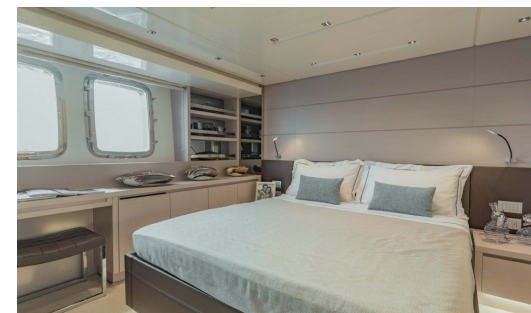
SANLORENZO SL78



SANLORENZO SL78



SANLORENZO SL78



SANLORENZO SL78

