

SANLORENZO SL96A

€7,200,000 | Year: 2021 | Length: 95.34 ft | Singapore



SANLORENZO SL96A

OVERVIEW

We are honoured to present this stunning Sanlorenzo SL96A to the market. Built in late 2021 (as a 2022 model year) and not handed over until 2022, this striking flybridge motoryacht is part of Sanlorenzo's innovative Asymmetric range. Kept in immaculate condition by her meticulous full time crew since delivery, and offered with very low engines hours (500hrs as of December 2023), there is no better yacht available in this class. As an added benefit, this particular yacht is fitted with MTU engines (16V2000M96 – 2,434 hp) that are an upgrade above and beyond the standard (16V2000M86 – 2,216 hp) propulsion offering.

Starting from the main deck cockpit with an al-fresco dining area, this yacht keeps guests connected with their environment and offers great outdoor spaces. Enjoy her forward bow lounge and sunbathing area, and climb a few steps to discover the large and luxurious flybridge. Here, pleasantly bathed in ocean breezes, guests will enjoy a fully equipped custom Boffi bar cabinet (with BBQ grill, fridge and ice maker), a large dining table surrounded by stylish Dedon chairs, and amazingly comfortable Roda sofas and sunbeds to the stern.

The SL96A's [asymmetric] lines rethink the classic layout of a traditional flybridge yacht, turning the conventional into something more modern and dynamic. Her unique configuration provides an excellent circulation onboard – making her the only yacht of this size in the market that offers a seamless flow of access from aft to flybridge to bow.

Thanks to this revolutionary asymmetric configuration (with only one sidewalk on the main deck), the port wall of the saloon extends to the yacht's full dimension, thus creating metres of extra living space. This deft design touch from Sanlorenzo creates a saloon that is wider, full of natural light with large floor to ceiling windows, whilst maintaining the sleek hull of a planing yacht that can achieve nearly 30 knots top speed.

The master suite, located on the main deck forward, has direct access to the foredeck which becomes an extension of the Owner's private apartment. In addition to the master cabin, this yacht comes with 3 cabins on the lower deck (including one is that is full beam as a second master cabin). Each cabin is ensuite, and in total allow overnight accommodations for 8. There is also space for 4 crew on board.

Features of Note:

Superb opportunity for a like-new 2021 Sanlorenzo yacht, with low engines hours and in pristine condition

Impressive interior volume thanks to her asymmetric lines and expanded internal volumes

4-cabin layout: Master suite on main deck & connected to the foredeck, and three generous guest cabins (including one full-beam VIP) on lower deck, each with its own ensuite

One of the largest flybridges in her category

Seamless flow of access from aft to flybridge to bow thanks to her ground-breaking design

Zero-speed stabilisers & Tropical Air-Conditioning

Comprehensive and considered specification with stunning and elegant hand-selected decor throughout, from top Italian brands such as B&B, Cassina, and Roda

An absolute must see and fantastic opportunity for quick delivery anywhere in Asia.

Please contact us with your enquiries on this yacht.

MEASUREMENTS

Length: 95.34 ft

Beam: 22.18 ft

Displacement:

PROPULSION

Engine No: 1

Engine Make: MTU

Engine Model: 16V2000M96

Engine Fuel Type: diesel

Engine Power: 2434HP

Engine No: 2

Engine Make: MTU

Engine Model: 16V2000M96

Engine Fuel Type: diesel

Engine Power: 2434HP

CONSTRUCTION

Builder: Sanlorenzo

Max Draft: 10.66 ft

BOAT DETAILS

Electrical Appliances

- Battery charger for generators
- Dimmer package for interiors
- Dimmer package for exteriors
- CCTV system: no. 3 fixed in cockpit, no. 2 fixed in engine room
- Additional touch screen monitor in crew area
- Raymarine Gold navigation package (diff. from standard)
- Raymarine Integrated Dashboard system
- 4G Wi-Fi internet with harbour hotspot antenna
- Saloon TV projector and screen

Audio and Video appliances

- 4G Wi-Fi internet with harbour hotspot antenna
- Saloon TV projector and screen

Household appliances

- Icemaker & fridge in flybridge bar cabinet
- Barazza BBQ grill in flybridge bar cabinet
- Miele combi steam oven in galley (diff from standard)
- Miele microwave in galley
- Miele W1 washing machine
- Miele T1 dryer

Interior Accessories

- Rainfall and hand-held showers in all cabins
- Under-bed storage drawers in owner's and VIP cabins
- TV behind stropsol mirror in owner's and VIP cabins
- B&B Mirto folding chairs for saloon dining table
- Cassina L-shaped sofa for saloon
- Super tuft gun metal carpet for saloon
- Eucalyptus dark brown wood in 20 gloss for entire yacht (diff. from standard)

Exterior Accessories

- Teak floor on flybridge
- Teak floor in bow area and flybridge side walkways (including steps)

- Sun awning for the stern area of flybridge behind the hardtop
- Bow bimini top with carbon fibre poles
- Electric opening roof system with blades for hardtop
- Disappearing stern shower
- No. 8 underwater lights
- Portside sliding wall in hull, with hi-lo electric system (salon area)
- Portside door on flybridge to access the superstructure walkway
- Additional sunbed with electric opening system panels in bow area (covering the anchor windlasses)
- Stainless steel column shower on flybridge
- No. 2 tables with hi-lo electric system with additional extension, natural teak top and stainless steel structures in cockpit (diff. from standard)
- Roda Spinnaker dining table on flybridge, natural teak top and smoke metal structure (diff. from standard)
- Roda Piper sofa on flybridge
- No. 2 Roda Piper 007 sunbeds on flybridge

Mechanical & Equipment Upgrades

- Zero Speed electric stabilisers (at anchor and navigation)
- Hydraulic stern thruster
- Upgrade to second 45kW generator (diff. from standard)

Disclaimer

The Company offers the details of this vessel in good faith but cannot guarantee or warrant the accuracy of this information nor warrant the condition of the vessel. A buyer should instruct his agents, or his surveyors, to investigate such details as the buyer desires validated. This vessel is offered subject to prior sale, price change, or withdrawal without notice.

Disclaimer

The Company offers the details of this vessel in good faith but cannot guarantee or warrant the accuracy of this information nor warrant the condition of the vessel. A buyer should instruct his agents, or his surveyors, to investigate such details as the buyer desires validated. This vessel is offered subject to prior sale, price change, or withdrawal without notice.

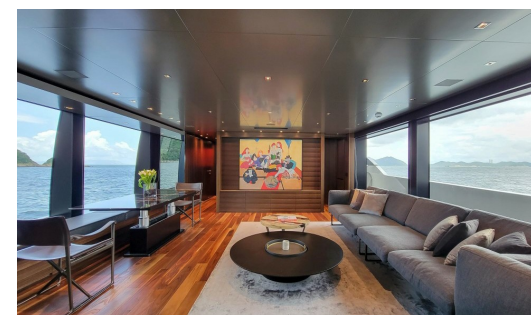
CONTACT INFORMATION

Viewing a yacht in Hong Kong is easy with our experienced team of Brokers. We can collect you from the airport, your hotel or any other location and take you to see yachts at one of the many picturesque marine locations around the city making life simple and stress free for you. We can help arrange moorings, management and provide many other services to make yacht purchase and ownership seamless.

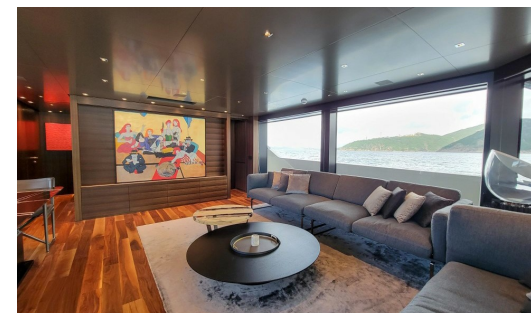
SANLORENZO SL96A



SANLORENZO SL96A



SANLORENZO SL96A



SANLORENZO SL96A



SANLORENZO SL96A

